

## SOCIAL SECURITY

This is another in a series of questions and answer on social security that deals with questions from workers and their families.

**Q.** My husband is going to be 65 next summer but is not planning to retire at that time. I say he should sign up for Medicare when he turns 65, but he says he doesn't have to until he retires. Who is right?

**A.** You are. Even though your husband would not be eligible for social security benefits at that time, he can have hospital and medical protection as soon as he reaches 65. Persons who plan to continue working after they reach 65 should file an application at their local social security office within the three months prior to the month of their 65th birthday. In this way they will automatically be covered by hospital insurance and can decide whether they want the voluntary medical insurance coverage.

**Q.** I plan to apply for social security. I cannot get a birth certificate because my birth was never registered. What do I need to prove my age?

**A.** Bring with you whatever proof of your age you may have, such as a baptismal certificate, a family Bible, an old insurance policy, a child's birth certificate, or other records showing your age. We will discuss other possible evidence when you file your claim.

**Q.** I am 35 and have been totally disabled since early childhood. I have never worked under social security, but a friend said I may be eligible for benefits on my deceased father's social security record. Is this correct?

**A.** Yes, you may be eligible for childhood disability benefits. You should get in touch with your social security office right away.

**Q.** My purse was stolen with my Medicare card in it. Do I need to get a new card?

**A.** Yes. You should contact your social security office as soon as possible. They will get you a new card. Your health insurance card lets the people at the doctor's office or hospital know whether you have hospital and medical insurance, and contains your Medicare claim number. Therefore, you should always have your card with you when you receive medical services.

**Q.** I have three young children. I understand that if my husband should die, the children could get social security benefits. I also work and have social security coverage. If I should die, would the children receive anything?

**A.** Yes. If you have worked

under social security long enough to be insured, your children could receive monthly benefits on your record, just as they could in case of your husband's death.

**Q.** I recently employed a household worker. How much social security tax should I withhold from her wages?

**A.** The tax rate for 1969 is 4.8 per cent for the employee. The employer pays a matching 4.8 per cent. The employer is responsible for sending in the total amount of taxes due and a report of the employee's earnings every 3 months, if cash wages amounted to \$50 or more over the 13-week calendar quarter.

## School Board Rejects Shortened Classroom Day

High School students in Los Angeles schools will not face a shortened school day next year it has been decided by the City Board of Education.

The board's decision not to shorten the school day by one period daily, for students in the 9th through 12th grades, was made at a special meeting. It was called to consider adoption of the 1969-70 tentative budget for both the Los Angeles Unified School District and the Los Angeles Junior College District.

Although the board did take was made to give board members a better indication of how much additional money might be available from the state to

help the school system overcome an estimated \$32.5 million deficit in next year's budget.

**ACTION TAKEN** by the board on the junior college budget authorized the system's budget division to prepare a action on the junior college budget, it postponed further consideration of the unified district budget at least until 1 p.m. on June 5. This decision \$33.5 million tentative budget for operating of the junior college district next year. This budget, to be formally adopted on June 19, would still mean that more than 3,500 students will not gain admittance to Los

Angeles eight junior colleges, because of a \$2 million shortage in income.

Two other decisions were made by the board, which also will affect the unified district's budget for next year.

The first was approval of a \$1.6 million reduction in supervision and consultant services. Approximately 60 supervisors' positions and 40 per cent of the consultant budget will be eliminated next year by the board's action.

**THE SECOND ACTION** taken by the board was to authorize the transfer of about one-

third of the system's auxiliary services to a special "opportunity tax" fund. Services affected generally will include those of child welfare and attendance workers and for psychiatric help.

This decision will mean that approximately \$1.8 million will be transferred from the dis-

trict's general fund to this special category — thus freeing this money for reduction of the estimated deficit.

However, the transfer will mean the increase of 2.4 cents in the opportunity tax, thus increasing the total estimated tax boost for next year in the unified district from 45.2 cents to 47.6 cents.

## On Task Force

Appointment of Donald W. Douglas Jr. of the McDonnell-Douglas Corp. to the Governor's Aerospace-Aviation Education Task Force has been announced in Sacramento. Douglas resides in Rolling Hills.

**ELIMINATION** of the sixth period cut from the list of reductions under consideration means that another \$7 million in possible budget reductions has now been rejected by the school board. Earlier this month, the board also took action not to consider reducing

health services by about \$4 million.

This means that the board is now faced with two alternatives — finding another \$11 million in savings by cutting other programs and services, or finding the same amount of money in new revenue from the state of California.

## Gets Degree

Eugene Bolyanatz, 21112 S. Doble Ave., will receive a master's degree during commencement exercises at the Indiana State University, Terre Haute, Ind., Sunday. U.S. Sen. Mark Hatfield (R-Ore.) will be the featured speaker.

# baker

# WAREHOUSE SALE

Our first warehouse clearance sale . . . and our warehouse is literally bulging . . . even over-bulging . . . with simply too much inventory that must be liquidated in a hurry!

Living rooms, dining rooms, bedrooms, dinettes, chairs, tables, lamps, odd-ends, anything and everything in the warehouse is slashed for this one-time-only sale.

**SAVINGS**  
From **40% to 80%**  
BRING YOUR OWN TRUCK OR TRAILER AND SAVE EVEN MORE!

This isn't a "normal" sale with just 10% or 20% or 30% discounts. Many items in our warehouse are being offered at **BELOW NORMAL DEALER COST!**

All merchandise is clearly marked . . . financing is available . . . but everything is offered on a first come, first served basis. All items listed are subject to prior sale.

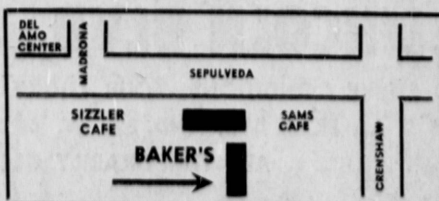


Here are just some samples of the many, many fantastic high fashion home furnishing values . . . hurry!

<b>FATHER'S DAY SPECIAL "RECLINERS"</b> Vals. to \$219—While They Last! Your Choice <b>89<sup>00</sup></b>	<b>9 FT. SOFA</b> Black Naugahyde Blauit Tufted Reg. 359.95 NOW <b>139<sup>00</sup></b>	<b>5 pc. DINETTE SET</b> Plastic top table with 1 full and 4 chairs. Values to 149.00 FROM <b>49<sup>00</sup></b> complete	<b>MATTRESS</b> With matching box spring set, twin or full size . . . starting at Per Set <b>49<sup>00</sup></b> KING SIZE SET . . . 109.00	<b>Living Room Chairs</b> Assorted—All Colors—All Sizes Starting <b>49<sup>00</sup></b>	<b>8 FT. SOFA</b> 8 Ft. Love Seat . . . quilted. 2 Only—Reg. 439.95 SALE for BOTH <b>225<sup>00</sup></b>
<b>STUDIO COUCH</b> Corner group. Complete with 2 beds, corner table, coverlets & bolsters . . . Reg. 279.95 NOW <b>169<sup>00</sup></b>	<b>Spanish Sectional</b> 3-Pc. Velvet with wood trim. 3 Only—Reg. 595.00 Reg. 595.00 NOW <b>349<sup>00</sup></b>	<b>5 pc. Bedroom Set</b> Walnut . . . triple dresser, mirror, king headboard and 2 commodes. Reg. 455.00 NOW <b>270<sup>00</sup></b> complete	<b>TABLES</b> Modern Walnut End Tables and Coffee Table—Reg. 49.95 Your Choice <b>22<sup>00</sup></b> each	<b>8 ft. SPANISH SOFA</b> With wood post arm. Beautiful cover—Reg. 399.00 NOW <b>149<sup>00</sup></b>	<b>CLUB CHAIR AND OTTMAN</b> Naugahyde Perfect for Him!—Reg. 199.95 NOW <b>119<sup>00</sup></b>
<b>8 FT. SOFA</b> Quilted Print . . . Pillow Back—Reg. 299.95 NOW <b>165<sup>00</sup></b>	<b>8 FT. SOFA</b> Modern Contemporary. Walnut wood trim — handsome cover. Reg. 335.00 NOW <b>199<sup>00</sup></b>	<b>5 FT. LOVE SEAT</b> Beautiful Print One Only—Reg. 169.95 NOW <b>39<sup>00</sup></b>	<b>DINING ROOM SET</b> 5-Pc. Walnut Extension Table and 4 Chairs—Reg. 299.95 Matching China—Reg. 189.95 Now 99.00! NOW <b>129<sup>00</sup></b>	<b>8 FT. SOFA</b> Contemporary Modern 2 Only—Reg. 239.95 NOW <b>139<sup>00</sup></b>	<b>SOFA SLEEPER</b> HIDE-A-BED Standard and Queen Size Starting At <b>149<sup>00</sup></b>
<b>LARGE SELECTION LAMPS</b> UP TO 70% OFF!	<b>Game-Dining Set</b> 5-Piece . . . Table with 2 full, 4 chairs on casters. Reg. 319.75 NOW <b>300<sup>00</sup></b>	<b>5 PC. BEDROOM GROUP</b> Triple Dresser, Twin Mirror, 2 Commodes, King Headboard Reg. 745.00 NOW <b>499<sup>00</sup></b>	<b>8 FT. SOFA &amp; 5-FT. LOVE SEAT</b> Black Naugahyde, buscuit tufted. Reg. 545.00 BOTH <b>269<sup>00</sup></b>	<b>TUXEDO 8 ft. SOFA AND 5-FT. LOVE SEAT</b> Beautiful Cover—Reg. 595.00 BOTH <b>339<sup>00</sup></b>	<b>TABLES</b> MEDITERRANEAN . . . Your Choice—Coffee or Square Commode—Reg. 99.95 NOW <b>65<sup>00</sup></b>

Come to the Warehouse . . . Directly Behind the Main Store!

USE YOUR BANKAMERICARD OR MASTER CHARGE



**baker**  
furniture • interiors

3246 SEPULVEDA BLVD., TORRANCE

PH. 534-1222

## 4 Big Days!

- Friday 10-9
- Saturday 10-6
- Sunday 12-5
- Monday 10-9

(Adjacent to Del Amo)

## Bank Wins Approval Of Branch

Centinela Bank, headquartered in Inglewood, has received approval from the Federal Deposit Insurance Corp., to establish a branch in Newport Beach, president Rowan Henry announced today.

It paves the way for the bank to open the new office — Centinela Bank's first in Orange County — around year end at Pacific Coast Highway and Newport Boulevard, Henry added.

Centinela Bank, which will be six years old in July, on March 31 had resources of more than \$16 million and deposits of more than \$13 million. In addition to marine financing, its features service-free checking accounts to both individuals and business accounts with minimum balance, low-cost auto loans, Master Charge convenience cards, and extended banking hours.

Head office is at 524 E. Nutwood St., Inglewood. The bank also has offices in Hermosa Beach and Playa del Rey.

## After 41 Years, Wilmington Man Now Retired

Elmer F. Hunts, 1522 Lagoon Ave., Wilmington, was retired June 1 after 41 years of service with the Los Angeles Department of Water and Power. He is a power switchboard operator.

Born in Ralston, Okla., Hunts began his DWP service as a substation and power house operator. He and his wife, Mary, have a son, two daughters and seven grandchildren. They are planning a trailer trip through the United States and Canada.