

which  
igible.  
e "City  
en de-  
on that  
ake a  
station  
ut in for  
And-  
only  
his ex-  
nderson  
en \$10-  
saying  
d to do  
merely  
of Tor-  
placed  
c street  
ing land  
ty. "The  
aid, "is  
er prop-  
through  
creation  
ment dis-

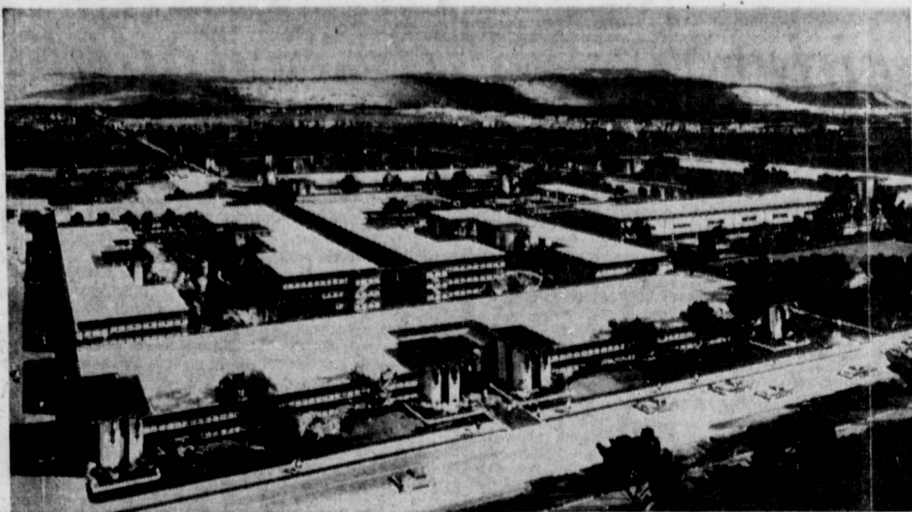
et Tues-  
ersonnel  
ase. The  
ced dur-  
ell meet-  
at 7:30

YOU  
E  
G.

R

IS  
RS

IS  
RS



**NEW COMPLEX . . .** Architect's rendering shows one of two major apartment developments to be constructed in Torrance by the Carson Estate Co. Garnet Victoria, to be located at Garnet Street and Madrona Street, is the smaller of the two developments. Anza Victoria will be the larger and is to be located

at Anza Avenue and Emerald Street. Total investment for the two developments, which will provide 316 one- and two-bedroom units, is in excess of \$5 million. Construction will begin in June on Anza Victoria, with completion of both developments expected in 1970.

## Plans Set for Two New Apartment Developments

Carson Estate Co., deeply rooted in the history of the Torrance area, will build two luxury apartment complexes here at a cost of more than \$5 million. Thomas Caldwell Cooper, president, announced yesterday.

The two are Anza Victoria, Anza Avenue and Emerald Street, with 184 units on 4.3 acres, and Garnet Victoria, Garnet Street, west of Madrona Street, with 132 apartments on 4.5 acres.

Groundbreaking is scheduled for late June on Anza Victoria, with Garnet Victoria construction to get under way in September. Both complexes are scheduled for completion in 1970.

**MOST OF** the residences will have two bedrooms and two baths, with 52 one bedroom apartments in the larger unit and 55 in the smaller. Almost all will have gas log fireplaces and patio decks.

The two and three story building groups will be set in landscaped grounds, complete with swimming pools, putting greens, barbecue areas, running streams, and hundreds of pine trees. There also will be recreation rooms, sauna baths, and Jacuzzi hot pools for residents, Cooper said.

The Carson Estate Co. goes back to the first and largest of California's Spanish land grants, the historic Rancho San Pedro awarded Juan Jose Dominguez in 1784. Its president, Cooper, is a seventh generation Dominguez, and the two complexes bear the given name of the founder of the company, Victoria Dominguez de Carson.

Neil Stanton Palmer and Associates, AIA, Palos Verdes Peninsula, is architect and engineer for both projects.

**RE-SAWN** redwood paneling will complement the heavy textured stucco exteriors. Spanish

### 'Chalk Garden' Evening Slated

The Torrance Human Relations Council has planned a theater party tonight at 8:30 p.m. at the Palos Verdes Players. "The Chalk Garden" performance will benefit the organization's treasury.

Tickets may be purchased from any council member or by calling Mrs. David Hall, 20327 Regina Ave.

### Press-Herald

Every Wednesday and Friday  
3236 W. Sepulveda Blvd., Torrance

**1968  
PRIZE-WINNING NEWSPAPER  
of the  
CALIFORNIA NEWSPAPER  
PUBLISHERS ASSOCIATION**

Member of  
National Newspaper Association  
Calif. Newspaper Publishers Assn.  
L.A. Suburban Newspapers, Inc.  
Verified Audit Circulation  
The Riesen Co., National Reps.

**GLENN W. PFEL  
Publisher**  
**REID L. BUNDY  
Editor and Co-publisher**

Jerry Reynolds . . . City Editor  
Gene Roberts: Display Adv. Mgr.  
Jay Delany: Classified Manager  
Clint Davey . . . Circulation Mgr.

Adjudicated a legal newspaper  
of general circulation by Superior  
Court, Los Angeles County, Ad-  
judicated, Decree No. C218470, June  
30, 1964.

**SUBSCRIPTION RATES:** By  
Carrier, 50c a month, Mail sub-  
scriptions \$16.00 a year. Circu-  
lation office at DA 5-1515.

red clay tile entryways, mas-  
sive open beams, warm earth  
colors, and adobe block walls  
accent the Spanish influence of  
the architecture. Imported  
Mexican tiles and wrought iron  
lamps add to the exterior deco-  
ration.

Each apartment will be car-  
peted throughout, including the  
kitchen, which will have a  
built-in electric oven and  
range, dishwasher, garbage  
disposal, and overhead hood  
with fan. All doors will be pan-  
eled, with front doors of carved  
paneling. Shower areas will be  
tiled.

Concrete floors between  
apartments, party walls, and  
floor systems are part of the  
extra soundproofing provided.  
One and a half parking spaces  
per apartment are provided.

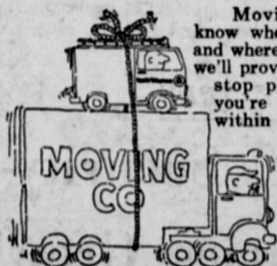
with extra guest parking  
areas.

**EACH TWO-bedroom** apart-  
ment will have 1,000 square  
feet and the one-bedroom  
apartment will have 750 square  
feet.

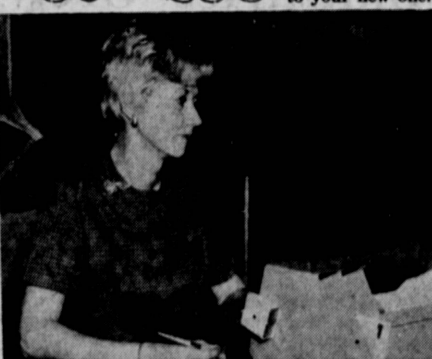
"This is only the first step in  
our plans to re-invest in the  
growth of the burgeoning area  
once owned by our forebears,"  
Cooper said. "We also are  
looking at other properties in  
the area in which to partici-  
pate in current and future  
growth of Torrance and the  
greater South Bay."

In the meantime, the com-  
pany is adding 30,000 square  
feet to its Dominguez Hills  
shopping center and moderniz-  
ing its North Torrance shop-  
ping center.

## What's doing?



Moving soon? Let us  
know when you're moving  
and where you're going, and  
we'll provide you with non-  
stop phone service. If  
you're moving anywhere  
within the Bell System,  
your Service Rep-  
resentative will  
see that your tele-  
phone is the last  
thing out of your  
old house—and  
the first thing in  
to your new one.



Sue Tuggle has been working in the Torrance office for 5 years. She and her family make their home in Inglewood.

This time of year I know a lot of you are plan-  
ning for important events; things like graduations,  
weddings and vacations. And your Yellow Pages  
can help you make those plans. Whatever product  
or service you're after, check your Yellow Pages  
first—and let your telephone help do some of the  
shopping.



Recently an Operator re-  
ported the following conver-  
sation with a troubled caller. Gen-  
tleman: "I'm trying to call my  
doctor, and I'm having trouble."  
Operator: "What kind of trou-  
ble, Sir?" Gentleman: "Well, I have  
this pain in my side, and it's going up  
my back."

Pacific Telephone

*J. C. Conn*  
J. C. Conn,  
Your District Telephone Manager in Torrance



## Concert to Climax Fine Arts Festival

Two musical programs will  
conclude three weeks of varied  
and hectic activity in Harbor  
College's Fine Arts Festival.

Tonight at 8 o'clock in Sea-  
hawk Center, the 87 members  
of the college's capelle choir  
will present their annual home  
concert under the direction of  
Janet Hay. A program of early  
and contemporary pieces will  
be performed. Antonio Lotti's  
"Crucifixus" in six part har-  
mony is the principal selection  
from this era.

Among contemporary num-

bers are some selections from  
the "Child's Book of Beasts"  
and "You're a Good Man Char-  
ley Brown." Original student  
compositions will be featured  
on Wednesday, May 28 at 8  
p.m. in Sawhawk Center. The  
composers include harmony  
and counterpoint students,  
composition majors who are  
members of the music theory  
class, and the brass ensemble  
class.

As part of their class pro-  
jects they have written in vari-  
ous forms such as three part  
inventions, songs, brass en-  
semble works, and string quar-  
tets. "The music is inventive  
and interesting," says Miss  
Ruth Anderson, music theory  
instructor.

Students who will have their  
works performed are Deric  
Binyon, Kristin Brundin, Rob-  
ert Buck, Alma Dileva, Susan  
Flynn, Leonard Frederick, Jo-  
seph Kennedy, Marilyn Mu-  
rata, Williams' Connor, Mary  
Peterson, Mitchell Savar,  
Camelia Rubio, Gregory De-  
castro, Margaret Harris, Eliza-  
beth Jones, James Meredith,  
and Martin Tueling.

## Stamp Club Will Meet

Club sales night will high-  
light the regular meeting of the  
Torrance Stamp Club Monday  
at 7:30 p.m.

The meeting will be held at  
the Scott Park Community  
Building, 23410 Catskill Ave.,  
Carson. All stamp collectors  
are invited to attend.

### RECORD PRODUCTION

U.S. dairy cows set a record  
of 9,006 pounds of milk per cow  
for 1968.

MAY 23, 1969

PRESS-HERALD A-3

## Supervisors Endorse Beach Study Proposal

County supervisors, on the  
motion of Burton W. Chace,  
have endorsed a bill pending  
before the State Legislature  
which would create a Southern  
California Beach Study Com-  
mission.

In endorsing the measure  
(AB 2090), Chace advised his  
colleagues the commission  
"would help to preserve and to  
enhance the state's shoreline,  
one of its finest assets."

The bill, sponsored by As-  
semblyman Alan Sieroty of Be-  
verly Hills, will be discussed at  
hearings beginning May 29.  
Chace asked that Los Angeles  
County spokesmen be present  
to support the measure.

### Declare Bonus

A quarterly dividend of 10  
cents per share has been de-  
clared on the common shares  
of Aeronca, Inc., manufacturer  
of aircraft and aerospace prod-  
ucts and environmental control  
components. The dividend will  
be payable June 30 to share-  
holders of record June 10.

"THE CONCEPT of a beach  
committee is an excellent one  
and has been brought into  
sharp focus by the recent  
threat of oil-slick damage to  
our precious shoreline," Chace  
said.

"The idea underscores the  
county's position in creating a  
Department of Beaches to pro-  
tect and improve our  
beaches," Chace said. "Every-  
thing possible must be done to  
preserve them for the best use  
by the public."

"A STATE Commission  
would provide a coordinated  
approach in dealing with the  
problem of beach protection,"  
he said. The Assembly bill, if  
approved, would require the  
commission to complete its re-  
port by January, 1971.

The group would be com-  
prised of nine members. Ap-  
pointments to the commission  
would be by the Senate Rules  
Committee, two members; As-  
sembly Speaker, two mem-  
bers; Governor, three mem-  
bers; Senate, one member;  
and Assembly, one member.

**ASTRO-SONIC STEREO SYSTEM  
from MAGNAVOX**

Record Player

Stereo Tuner

Speakers

Dust Cover

**THE PROGRESSIVE SOUND**  
Magnavox has taken quality components and beautiful styling and  
created the sound system that everyone is talking about. The "Micro-  
matic" record player, custom amplifier with 40 watts  
peak music power and solid state FM/AM radio  
with FM stereo and two high efficiency speakers  
with two 10" woofers and two 1000 cycle  
bass woofers have all been electronically  
balanced so that you may enjoy the ultimate  
in listening pleasure for years.

**399<sup>90</sup>**

## GENERAL ELECTRIC WASHDAY MIRACLES



### GENERAL ELECTRIC AUTOMATIC GAS DRYER

No guesswork drying — synthetics, rugged cottons, sheers or fragile gar-  
ments, this new dryer takes the guess work out of drying clothes. Just push  
one button — dial the fabric type — and clothes come  
out with the correct degree of dryness. REGULAR 189.

**179.**

### GENERAL ELECTRIC AUTOMATIC WASHER

Designed to give just the right care to any type of washable, simply set the  
selector buttons and turn the dial to suit the kind of fabric being laundered  
— including perma-press, mini-basket, filter flo and  
unbalanced load control. REGULAR 239.

**199.**

BUY NOW ON A BARKER FLEXACCOUNT...  
NO MONEY DOWN, UP TO 3 YEARS TO PAY.

## BARKER BROS.

GRENSHAW • Santa Barbara at Marlin • 292-5311  
INGLEWOOD • 220 South Market Street • 677-9191  
Shop Monday, Thursday and Friday 10 to 9, Other days 10 to 6