

Films on Juvenile Delinquency Listed

(Editor's note: This is the third and final article by Dist. Atty. Evelle J. Younger, describing 16 mm. films available locally for showing by clubs and organizations. Today's article tells of films concerning crime and juvenile delinquency.)

By EVELLE YOUNGER
District Attorney

The Detached Americans, 30 minutes. This film considers the sociological reasons for a sense of detachment by Americans and Harry Reasoner discusses why Americans don't want to become involved. Los Angeles City Library, Los Angeles County Library, Association Films, Inc.

The Odds Against, 31 minutes. Follows an offender from arrest through jail detention, trial, prison, parole hearing to discharge. Los Angeles County Library.

Men in Cages, 52 minutes. Investigates the criminal, from first offender to hardened criminal, and his life behind bars. Los Angeles County Library, Association Films, Inc.

The Face of Crime, 26 minutes each. A two-part report on new methods in crime. Association Films, Inc. (\$7.50 rental for each part).

Vandalism: Crime or Prank, 5 minutes, color. The question of whether vandalism is a crime or a prank is explored. Also discussed is the responsibility of an adult who witnesses such an act. Los Angeles City Library.

The Dangerous Years, 27 minutes. Narrated by David McCallum, the film, through actual on-the-spot scenes, reveals the world of the juvenile offender and the responsible, often frustrating, efforts of police, probation authorities, courts and correctional institutions to stem the tide of juvenile crime. Modern Talking Picture Service.

The Thin Blue Line, 27 minutes. A dramatic report on the men in blue—police officers. The film walks the beat with the men who risk their lives to protect us from danger, whatever the source. Modern Talking Picture Service.

Two films in the miscellaneous category include:

Justice and the Poor, 60 minutes. A report on the inequities in the present justice system and on reforms. Association Films, Inc. (\$13.50 rental fee.)

Abortion and the Law, 54 minutes. A documentary which focuses on the legal, moral, social and psychological aspects of abortion in the United States. Los Angeles City Library.

These are the sources for films described in this series: Association Films, Inc. 2221 S. Olive St., Los Angeles 90007; telephone 749-0377. Films available on a rental basis.

California Attorney General, State Building, First and Broadway, Los Angeles 90012, 620-3089. No charge.

Los Angeles City Public Library, 630 W. Fifth St., Los Angeles 90017, 626-7461. Films

may be borrowed by holder of an adult library card, without charge. However, an insurance fee is collected for each title protecting borrower against damage in an amount over \$10.

Los Angeles County District Attorney's Office, Hall of Justice, Temple at Broadway, Los Angeles 90012, 626-3888. No charge.

Los Angeles County Health Department, Old Hall of Records, Los Angeles 90012, 625-3212. No charge; requests should be directed to the division of public health education.

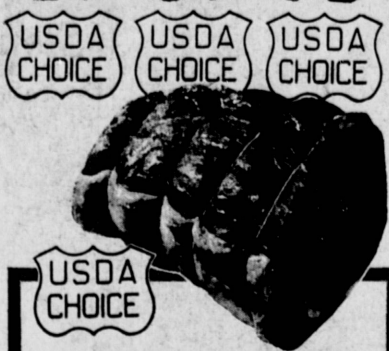
Los Angeles County Information Services, Hall of Administration, 500 W. Temple St., Los Angeles 90012, Madison 5-3611. No charge.

Los Angeles County Public Library, 320 W. Temple St., Los Angeles 90012, Madison 5-9211. Films may be borrowed by holder of an adult library card without charge. However, an insurance fee is collected for each title protecting borrower against damage in an amount over \$10.

Modern Talking Pictures Service, 1145 N. McCadden Place, Los Angeles 90038, 469-8282. Films available on a rental basis.

U.S. Bureau of Narcotics and Dangerous Drugs, 714 W. Olympic Blvd., Los Angeles 90015, 688-4820. No charge.

For Best Meats Shop at Safeway



Boneless Roasts

Rolls & Tied Beef Chuck
USDA Choice Beef—Flavorful and Tender. Ideal for Pot Roast. Slices Evenly for Dinner or Sandwiches. Low in Price!
lb. 79¢

Chuck Steaks Bone Cut—USDA Choice Beef for Barbecuing! **lb. 59¢**

7-Bone Steak Center Cut USDA Choice Beef Chuck **lb. 69¢**

Boneless Steak USDA Choice Beef Chuck **lb. 89¢**



Boneless Steaks

Full Center Out Rounds
USDA Choice Beef—Safeway Aged and Trimmed. Flavorful and Tender. Ideal to Pan-Fry. Low in Price! Safeway Guaranteed!
lb. 98¢

Boneless Roast Round or Rump USDA Choice **lb. 98¢**

Chicken Fried Beef Steak Patties **12-oz. pkg. 69¢**

Fried Chicken Banquet Fully Cooked **2-lb. box \$1.79**



Hen Turkeys

Manor House Quality Or
Norbest • California Brands
Plump, Tender and Meaty As Only A Safeway Turkey Can Be. Our Buyers Are Fussy In Selecting Their Turkeys For You. Only The Very Best Are Good Enough!
lb. 39¢

Turkey Drumsticks **33¢**

Turkey Hindquarters **33¢**

Turkey Wings Light Meat Economical **lb. 33¢**



Canned Hams

Swift's or Dubuque
Boneless and Fully Cooked Hams. Savory and Hickory Smoked in Flavor in Every Bite. Cut From Tender and Meaty Eastern Porkers.
3-lb. can \$2.98

Veal Shoulder Chops **69¢**

Lamb Chops Shoulder Cuts—USDA Choice Spring Lamb **lb. 98¢**

Leg Of Lamb Short Shank—Milk Fed Spring USDA Choice **lb. 98¢**



Bananas

Cabana Variety
lb. 10¢

Firm & Golden Ripe



Sweet Corn

Fresh Picked
3 ears 29¢



Apples or Oranges

Red Winesap
Washington State Extra Fancy
8-lb. bag 99¢

Juice Oranges
Fancy California Valencia

Red Potatoes U.S. No. 1-A New Crop **5-lb. 39¢**

Italian Squash Extra Fancy **lb. 19¢**

Foil Wrapped Lilies Jan De Graaf Assorted Colors **6-lb. pkg. \$1.99**

Foil Wrapped Mums Fancy Quality **6-lb. pkg. \$2.99**

Safeway Also Carries—A Large Selection of Hyacinths, Tulips, Anemones, and Other House Plants. Available At Most Safeways.

LOW PRICES TOO!

Tomatoes Bonito Brand 28-oz. **25¢**

Peaches Highway Brand 28-oz. **26¢**

Lemon Drink Pineapple Grapefruit 48-oz. **33¢**

Tomato Juice 48-oz. **31¢**

Grapefruit 48-oz. **49¢**

Applesauce 48-oz. **49¢**

New Potatoes 2-lb. **29¢**

Refried Beans 28-oz. **31¢**

HEALTH & BEAUTY

Right Guard Anti-Persepsant 8-oz. **\$1.37**

Alka-Seltzer For The "Wahs" 8-oz. **85¢**

Super Blue Blades 8-oz. **91¢**

Maxol Antacid 8-oz. **\$1.00**

Excedrin Tablets 8-oz. **\$1.00**

Jergon's Lotion 8-oz. **86¢**

Ban Spray 4-oz. **76¢**

Aqua Velva 4-oz. **80¢**

Brock Creme Rinse 4-oz. **\$1.00**

Sauve Hair Spray 12-oz. **69¢**



BIG BUY Cream O' The Crop Large Eggs

39¢



BIG BUY Sparkle Pool Chlorine

4 \$1.59



BIG BUY Vacuum Pack Edwards Coffee

59¢



Dairy & Delicatessen Jack Cheese

79¢



Lucerne Yogurt Cottage Cheese

31¢



Grapefruit Juice

29¢



BIG BUY Hunt's Brand Tomato Sauce

10 \$1



BIG BUY 4-Roll Pack Zee Toilet Tissue

3 \$1



BIG BUY Balanced Ration Pooh Dog Food

7¢



Soup N' Crackers Town House Tomato Soup

10¢



Orange Juice

27¢



Rotarians To Honor Students

Harbor College scholars will be honored at the 19th semi-annual Rotary Scholarship Recognition Banquet in the campus cafeteria Wednesday, May 14, from 7:30 to 8:30 p.m.

Approximately 75 students will be given scholarships and other awards in recognition of academic excellence. Scholarship winners will receive awards totaling more than \$1,000.

Three scholarships will be awarded by the Lomita Rotary. The Carson-Domingue Club will donate one. The Lomita scholars will be given to students majoring in business administration, pre-law, or a two year vocational program.

BANQUET guests will also hear the presentation of the President's Honor Roll by College President Wendell C. Black. This list honors all students with a 3.5 grade point average in more than 12 units.

Members of Alpha Gamma Sigma scholarship organization will be named by Mrs. Alice Fuerst, sponsor. Max Garten, sponsor, will introduce members of the Tars, men's service organization and Marilyn Cohn will introduce members of Spars, women's service organization.

All 117 Safeway Stores in Los Angeles Are Your Authorized Food Stamp Program Retailers

• TORRANCE BLVD. at ANZA
TORRANCE

• PACIFIC COAST HWY. at NARBONNE
LOMITA

• 1355 N. AVALON at PAC. CST. HWY.
WILMINGTON

• CARSON AT WESTERN
TORRANCE