

## Area Educators Plan Meeting

Dr. Roy Nishikawa, past national president of the Japanese American Citizens League, will address members of Phi Delta Kappa's South Bay chapter next Wednesday evening.

John Nushy, curriculum coordinator at North High School, attended a conference on "Educational Alternatives Through Innovation" in Temple City last week.

## THE MOST COLORFUL COLOR COMES FROM RCA... THE BIGGEST VALUE COMES FROM GRIFFEYS

### RCA...First in Color TV!



#### GRIFFEY'S BEST V-A-L-U-E PRICE

★ FREE DELIVERY, 90 DAY SERVICE POLICY, NORMAL INSTALLATION.

"WE SERVICE WHAT WE SELL"

**GRIFFEY'S**

- EASY PAYMENTS
- PLENTY OF FREE PARKING

3840 SEPULVEDA BLVD., TORRANCE

#### Check the price on this fine wood big-screen Color

Styled to save you floor space and priced to save you money, this giant-screen RCA console is one of our finest Color TV values. Powerful 25,000-watt chassis.

PAY \$20.00 MONTH

The HALLMARK Model GC-611 22" diag., 250 sq. in. picture

**\$439**

★ LIBERAL TRADE-IN ALLOWANCE FOR YOUR OLD TV

FR. 5-0588

OPEN 9-9 P.M.  
SAT. 11-6 P.M.  
SUN. 11-5 P.M.

## 150 Units To March In Parade

More than 150 units have now entered the Gardena Loyalty Day Parade, scheduled for Saturday, April 26, at 2 p.m., according to a spokesman for the Gardena Veterans of Foreign Wars.

The parade, scheduled to begin at Gardena Boulevard and Vermont Avenue, will travel west on Gardena Boulevard to Normandie Avenue, north to 162nd Street, and then turn north again on La Salle Street to disband near the Gardena Community Center.

The main reviewing stand will be located at the Gardena Civic Center on 162nd Street.

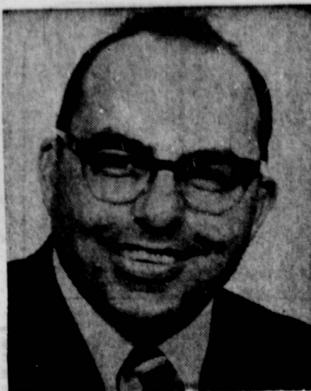
The Loyalty Day Committee will sponsor a dance the evening of April 26. It will begin at 9 p.m. at the Gardena VFW Memorial Hall, 1822 W. 162nd St., Gardena.

## Man, Wife Arrested In Burglary

A husband-wife team has been arrested in connection with a burglary in Torrance.

Charged with burglary, receiving stolen property, forgery, possession of dangerous drugs, being under the influence of narcotics, and possession of narcotic paraphernalia were Dale Richard Powers, 31, and Margo Marie Powers, 26, of Los Angeles.

Their arrest was linked to the Feb. 16 burglary of the home of Jack M. Daniels in Torrance. The two are suspected of stealing two television sets, a gun, and cash, totaling \$800 in value.



## This I Believe..... About Our Schools and Our Children

A MESSAGE FROM STAN DUNN —

A CANDIDATE FOR TORRANCE SCHOOL BOARD

**EDUCATIONAL PROBLEMS OF TODAY ARE SOCIETY'S PROBLEMS OF TOMORROW** — Let us be fair and honest. When compared to other areas, Torrance has an excellent school system, but we cannot afford to become complacent. Other school districts that once thought they had no problems and consequently did not attempt to foresee future needs are now in trouble. We must not let this happen in Torrance.

AS A MEMBER OF THE SCHOOL BOARD I WOULD SEEK ANSWERS TO THE FOLLOWING QUESTIONS:

(1) Are we doing enough to develop the "total" student? Many of today's college students are brilliant, but their actions would indicate that they are alienated from society. Where have we failed? How can we develop students who want to participate in and improve society, not destroy it? I believe that programs should be established which allow the student to develop a sense of social responsibility and an awareness of the heritage of this great nation. Tomorrow's orderly society begins in today's classroom.

(2) Is the curriculum relevant to the needs of today and tomorrow? Cultural and technological changes are taking place at a pace few of us can keep up with, but our schools must. Students and parents have a right to expect the schools to be aware of such changes in order to prepare the student to assume the responsibilities of a citizen in tomorrow's society. The concerned citizen of tomorrow is the educated student of today.

(3) Can we get more education for our dollars? The tax burden on the homeowner has passed the breaking point. Retired

citizens are particularly hard hit by this ever-increasing tax load. Ways must be found to keep taxes down. Let's take a page from private enterprise! We can increase efficiencies through modern business techniques without sacrificing quality of education.

(4) In what areas can there be more cooperation between local government and the schools? Greater emphasis should be placed on the sharing of school and city recreational facilities. Police relations and narcotics education and should become a cooperative effort.

(5) How can we improve our remedial programs? Modern society demands a high degree of skill in Math, English, and Spelling, not only in the professions but in all occupations whether it is Carpenter, Secretary, Printer, Sales Clerk, Repairman, or Plumber. More attention must be paid to early diagnosis of weak areas in our students, and the application of corrective, remedial programs. It is only by being willing to cope with the problems of today that we can prevent the tragedies of tomorrow.

(6) Can ways be found to aid our teachers? Teaching is more than a job. It is a profession dedicated to the building of our most precious asset — our children. It is a rewarding, but often frustrating vocation and requires the full understanding and cooperation of the community. The school board must be alert to finding new means of encouraging and aiding educators so that the Torrance schools will always have the finest teachers available.

I AM CONVINCED THAT, with your support, answers to these questions can be found.

Thank You

PLEASE VOTE

APRIL 15th

STAN DUNN

FOR

Torrance School Board

X

## Day in to day out—your funds never lose a single day's earnings at Southwest Savings.

Add to your account at any time. Make withdrawals whenever you need them. Southwest Savings will pay you full earnings without any quarterly forfeit and regardless of how short a period your money is in. Furthermore, funds received by the 10th of the month start earning from the 1st. Two very good reasons, of

many, why an insured Southwest Savings account is one of the soundest, most profitable investments you can find—free from market fluctuations. During this Reinvestment Period, April 1st to 10th, why don't you join the prosperous family of Southwest Savers—in person or by mail. Postage prepaid both ways.

**5.25%**

Bonus accounts issued in multiples of \$1000. Extra .25% added per year to the current annual rate of 5% after the account has reached its 36-month maturity date. Withdrawals earn the regular 5% passbook rate while the balance, in \$1000 equivalents, continues to qualify for the bonus.

### Free Sports Calendar

April 1st to 10th



All your favorite events scheduled day by day for a year. Local baseball, football, basketball, golf, horse racing, horse shows, sports-car racing, festivals, track, dog shows—and more. Stop by during April 1st to 10th Reinvestment Period and claim yours—while the limited supply is available.

**Southwest Savings**  
AND LOAN ASSOCIATION

INGLEWOOD: (main office) 2700 W. Manchester at 6th Ave./753-3601  
TORRANCE: 1603 Cravens at Marcelina/328-6111  
CORONA: Fifth and Main Streets/737-2774  
SOUTH PASADENA: 1321 Huntington Dr./254-3436  
mon. thru thurs: 9:30 am to 4 pm; fri. to 6 pm



## ボーイズ・マーケット 今週の大特価

4月10日(木)より4月16日(水)まで

• TORRANCE  
NORMANDIE AVE. and CARSON STREET  
SEPULVEDA BLVD. and ARLINGTON AVE.  
• CARSON/GARDENA  
AVALON BLVD. and DEL AMO BLVD.

YAMASA BRAND SHINMI SOY SAUCE, GAL CAN

ヤマサ新味醤油 **\$1.95**

SAPPORO ICHIBAN INSTANT NOODLES, 3 1/2 OZ. PKG.

サツポロー番 (大判) **8 for \$1**

SHIRAKIKU BRAND UNAGI KABAYAKI, FLAT CAN

うなぎかばやき **49¢**

DRIED SHRIMPS, 3 OZ. PACK

干えび **69¢**

TOKYO ZUKE, 7 1/2 OZ. CAN

東京漬 **23¢**

NEW ITEM ★ SUBUTA-NO-MOTO, 3.87 OZ. BOX

酢豚の素 (パックタイプの素) **39¢**

SEA RICH BRAND BABY CLAMS, 10 1/2 OZ. CAN

子貝の水煮 **39¢**

SHIRAKIKU BRAND KOMBUMAKI

昆布まき **5 for \$1**

HIME BRAND CHUKA SOBA, 5 OZ.

中華そば **6 for \$1**

### BOYS EVERY DAY LOW PRICES

TO FU HINODE—1# 4 OZ. 33c ea.

NOODLES—1# bag 27c lb.

WONTON SKINS—1# 35c lb.

KAMABOKO (red or white)—7 oz. 57c ea.

AGE—pkg. of 4 34c pkg.

SHIRA-TAKI—9 oz. 25c ea.

KANYAKU—11 oz. 39c ea.

CABBAGE-TAKANA-NAPPA-KYURI-

DIAGON-GOBO—12 oz. bag 55c ea.