



**EARNs AWARD . . .**  
Donna Ehrlich, daughter of Mr. and Mrs. H. B. Ehrlich of 2321 W. 180th St., has won the California Savings & Loan League's Outstanding Student Award. Miss Ehrlich attended St. Mary's Academy of Inglewood. She plans to teach when she completes college studies.

## Cancer Society To Move

Moving to meet mounting needs for service, the American Cancer Society will relocate its Centinela-South Bay district office to expanded quarters in Lawndale next week, Mrs. Raymond Lucke, district council chairman, said today.

Except for providing emergency telephone service the district's office is scheduled to be closed Thursday to permit staff and volunteers to move equipment to 14805 Hawthorne Blvd., — approximately two miles north of its present location in Lawndale. Telephone numbers will remain unchanged — 370-5684 and 772-1176.

"We are pleased, indeed, to remain in Lawndale which provides centralized access to volunteers and residents from all of the district's 24 communities," Mrs. Lucke said in making the announcement.

**THE NEW building** — covering approximately 2,000 square feet — doubles the present office space, and provides additional facilities for staff and volunteer projects.

Reflecting the severe need for additional office space is the fact that requests for educational programs and service to the area's cancer patients in the area have nearly tripled during the past year.

Since Sept. 1, 1968, Mrs. Lucke said more than 800 education programs offering films, volunteer doctor speakers and literature at no charge were presented to local audiences totaling some 40,000 persons.

**A TOTAL** of 2,073 dozen free dressings were distributed to cancer patients for whom the district office also offers transportation and counseling services. Money raised during the annual April crusade also supports research projects underway in medical institutions throughout the nation.

Noting that the office move is expected to be completed by Friday (June 27) Mrs. Lucke said that volunteers are looking forward to servicing the public from their new quarters.

"Ample working space and facilities will enable all of us — staff, volunteers and residents — to strengthen our winning 'fight against cancer,'" she said.

## WALK IN HUMIDOR CIGARS

Over 100 different imported and domestic highgrade cigars.



Use Your BankAmericard or Master Charge

## SMOKERS' EMPORIUM

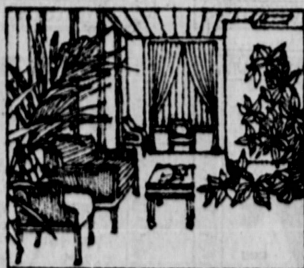
18541 HAWTHORNE BLVD.  
TORRANCE 371-7149  
OPEN 10-6:30, 8-10, & 12-5  
CLOSED SUNDAY

# capitalist

(or kapit'-)n.

1. One who has \$5000 on deposit at Western Federal Savings. 2. A member of The Capital Club.\*

Charter membership in **The Capital Club** is now available. Membership privileges include: private club-lounge facilities †(open from ten until three, Monday through Friday); complimentary refreshments; world-wide financial periodicals; free travelers cheques and money orders; free safe deposit box; preferred use of community meeting room; check cashing service; free notary public service; tours and recreational programs; free checking accounts‡; preferred rate auto loans‡; free collection service on notes secured by deeds of trust.



A VIEW OF THE CAPITAL CLUB

Please send or bring **This completed form** to the Western Federal Savings office nearest you. If you would like to transfer funds from another financial institution in order to qualify for membership, our new accounts department can accommodate the entire transaction for you.

### Western Federal Savings Offices:

1. 600 South Hill St., Los Angeles 622-1185
2. #10 Fashion Square, La Habra 691-1000
3. 2233 N. Tustin Ave., Orange 637-3470
4. 21525 Hawthorne Blvd., Torrance 370-4041
5. 355 E. Manchester Blvd., Inglewood 671-1200
6. 101 N. Larchmont Blvd., Los Angeles 466-8477
7. 9510 Wilshire Blvd., Beverly Hills 274-9151
8. 14600 Roscoe Blvd., Panorama City 892-4444

### The Capital Club

Please send more information and application for membership.

Name \_\_\_\_\_

Address \_\_\_\_\_

City \_\_\_\_\_

Zip \_\_\_\_\_



†All offices except Beverly Hills, Larchmont and Orange.

‡Offered through leading local bank.