



BLUE CHIP STAMPS

BLUE CHIP STAMPS

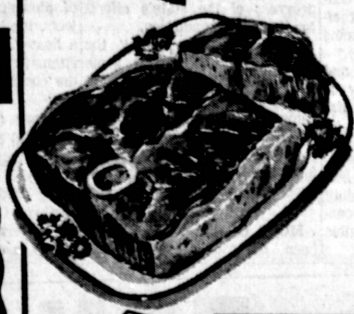
Our Annual Rose Sale!

BARE ROOT ROSES

1969 CALIF. CROP PEACE-CHARLOTTE ARMSTRONG & SUTTERS GOLD

39^c EA.

2-YEARS OLD . . . OVER 12 VARIETIES TO CHOOSE FROM, THESE PLANTS HAVE A VIGOROUS ROOT SYSTEM . . . ALL PRE-PRUNED AND READY TO BLOOM!



U.S.D.A. CHOICE FULL-CUT, BONE-IN **ROUND STEAK** **79^c LB.**



BE SURE TO VISIT BOYS GOURMET MEAT SECTIONS

BOYS LOVE GIRLS

U.S.D.A. CHOICE **TENDER JUICY BONELESS ROUND STEAK** **89^c LB.**

U.S.D.A. CHOICE **BONELESS TOP BOTTOM ROUND STEAK** **98^c LB.**

U.S.D.A. CHOICE **BONELESS, TENDER, JUICY TOP SIRLOIN STEAKS** **\$1.39 LB.**

U.S.D.A. CHOICE **BONELESS SIRLOIN TIP STEAK** **\$1.09 LB.**

U.S.D.A. CHOICE **BONELESS LEAN CUBE STEAK** **\$1.09 LB.**

U.S.D.A. CHOICE **TENDER BONE-IN RUMP ROAST** **79^c LB.**

U.S.D.A. CHOICE **BONELESS HEEL OF ROUND ROAST** **79^c LB.**

U.S.D.A. CHOICE **BONELESS CUT-UP STEWING BEEF** **79^c LB.**

U.S.D.A. CHOICE **WILSON'S CRISPRITE SLICED BACON** **49^c LB.**

CRISCO OIL 24-OZ. BOTTLE **39^c**

GRADE "A" **CUT-UP Frying Chicken** **35^c**

GRADE "A" **FRYING PARTS Whole Legs & Breasts** **59^c LB.**



FRESH GROUND HOURLY

GROUND BEEF **43^c LB.** | **GROUND CHUCK** **69^c LB.** | **GROUND ROUND** **79^c LB.**

- APPLE LAND 15-OZ. GLASS JAR **APPLE SAUCE** **4:51**
- CASE SWAYNE 46-OZ. CAN **GRAPEFRUIT JUICE** **39^c**
- SKIPPY 15-OZ. CAN **DOG FOOD** **5:49^c**
- WAM CAMP 24-OZ. CAN **DEEF STEW** **49^c**
- NESTLES 1 1/4-LB. CAN **EVEREADY COCOA** **59^c**
- LADY BECKWITH 2 1/2 CAN **ELBERTA PEACHES** **3:51**
- BUDDY BOY 2-LB. BAG **POP CORN** **29^c**

GREEN GIANT 16-OZ. CANS **CORN BEANS PEAS** **4:51**

LIBBY 46-OZ. PINEAPPLE JUICE **19^c**

Boys JR. DEPT. STORE

PULLOVER BLOUSES **98^c EA.**

BOXER JEANS **98^c EA.**

GIANT CANDY BARS REG. 15^c **9^c EA.**

PLASTIC RUNNERS **19^c EA.**

Boys DELI

1st QUALITY CARNATION COTTAGE CHEESE **29^c**

ALL FLAVORS 8-OZ. CUP CARNATION YOGURTS **5 FOR \$1**

PRODUCE

BANANAS **10^c LB.**

PILLSBURY 5-LB. FLOUR **49^c**

MORTON FROZEN 8-OZ. CHICKEN-BEEF-TURKEY MEAT PIES **6 FOR \$1**

BOYS 1/2-GAL. BLEACH **25^c**

FRESH PICKED YOUNG TENDER CARROTS **10^c**

VITA-PAKT - PASTEURIZED GRAPE FRUIT JUICE **29^c**

OPEN 9 A.M. 'TIL MIDNITE

IDA TREAT FROZEN 9-OZ. CRINKLE CUT OR FRENCH FRIES **10^c**

HAMLET 12-OZ. IMPORTED LUNCH MEAT **39^c**

GLOBE A-1 ONE-POUND SPAGHETTI **19^c**

CAMPBELL'S 10-OZ. TOMATO SOUP **10^c**

M.J.B. COFFEE

1-LB. 71^c INSTANT, 6-OZ. 90^c

2-LB. 1.41 INSTANT, 10-OZ. 1.29

3-LB. 2.07

LARRY'S (FROZEN)

POTATOES w/ CHEESE 10-OZ. 39^c

POTATOES w/ CHILI CREAM 10-OZ. 35^c

POOR BOY PASTRAMI 7^c 59^c

POOR BOY BBQ BEEF w/ HAM 7^c 59^c

POOR BOY 7^c 59^c

HOT BEEF 8^c 59^c

HOT TURKEY 8^c 59^c

PLAIN BREAD 6-OZ. 37^c

CHEESE BREAD 6-OZ. 37^c

LARRY'S GRAVY w/ BEEF 1-LB. 79^c

LARRY'S BBQ SK. w/ BEEF 1-LB. 79^c

SUNSHINE

GRAMAM CRACKERS 39^c

16-OZ. HYDROX COOKIES 69^c

23-OZ. ASST. CUP CUSTARD 69^c

BAKER BOY CONFECTION ROLL **49^c**

PICTUREWAY (FROZEN)

PEAS 10-OZ. 2/45^c

CUT CORN 10-OZ. 2/45^c

CHOPPED SPINACH 10-OZ. 5/51

LEAF SPINACH 10-OZ. 5/51

BABY LIMAS 10-OZ. 29^c

FORDHOOK LIMAS 10-OZ. 29^c

BLACK-EYE PEAS 10-OZ. 25^c

STEW VEGETABLES 32-OZ. 53^c

Boys Markets

CHECK YOUR PHONE BOOK FOR THE BOYS MARKET NEAR YOU