

# Complete Selection Of Merry Christmas Meats To Grace Your Holiday Table....



**6 BIG SALE DAYS** THURS. Thru TUES. DEC. 19 thru 24  
**CLOSED CHRISTMAS DAY** WEDNESDAY, DECEMBER 25  
 OPEN 'TIL 7 P.M. CHRISTMAS EVE., TUES., DEC. 24

FARM FRESH U.S. INSPECTED

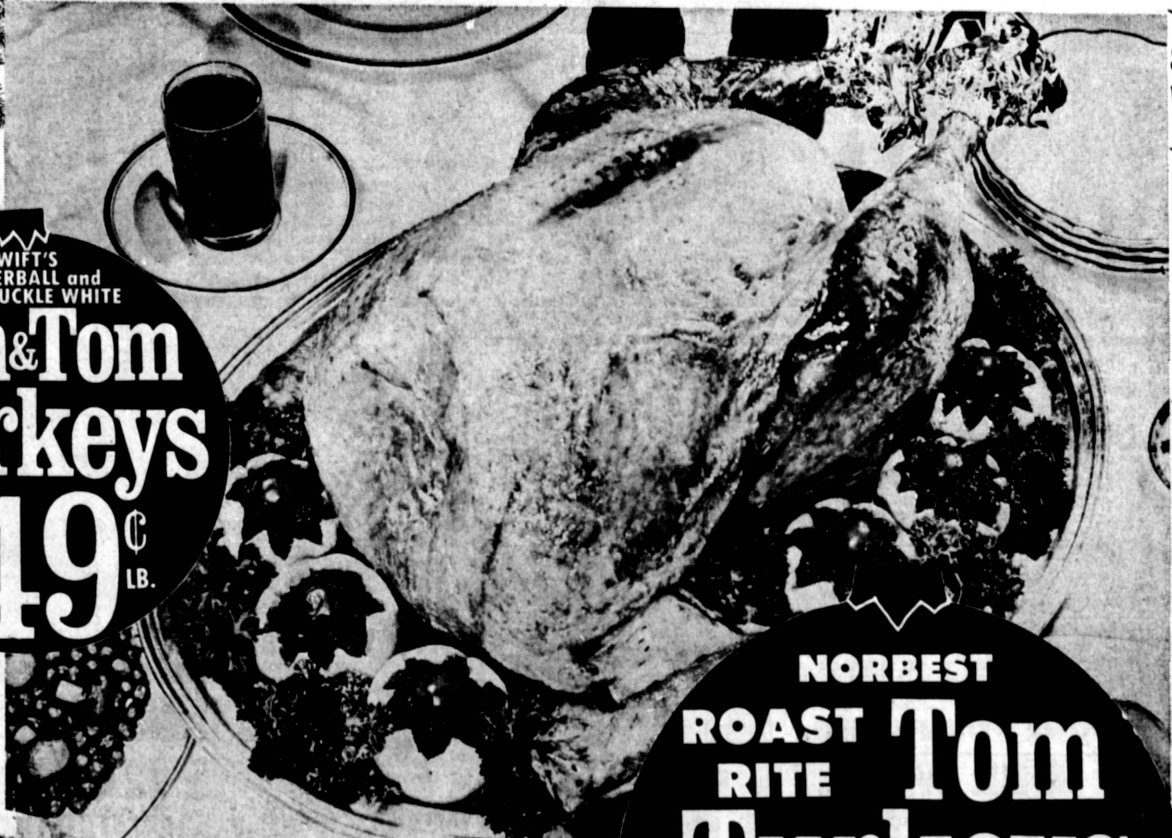
**FRYER PARTS**

- LEGS & THIGHS
  - BREASTS
  - WINGS
- WITH BACK PORTIONS  
**CHICKEN GIZZARDS 39¢ lb.**  
 FOR YOUR STUFFING & GRAVIES

ONLY THE BEST PARTS  
**PICK OF THE CHICK 39¢ lb.**  
 NO NECKS OR BACKS

**BONELESS STEAKS**  
 U.S.D.A. CHOICE STEER BEEF  
 • TOP & BOTTOM ROUND  
 • CUBE • CHICKEN FRY  
 YOUR CHOICE **98¢ lb.**

SWIFT'S BUTTERBALL and HONEYSUCKLE WHITE  
**Hen & Tom Turkeys**  
 USDA GRADE A FRESH FROZEN PLUMP JUICY  
**49¢ LB.**



**NORBEST ROAST RITE Tom Turkeys**  
 USDA INSPECTED PLUMP  
 16-18 LB. AVG.  
**29¢ LB.**  
 For Your STUFFING & GRAVIES CHICKEN GIZZARDS **39¢ lb.**



**LUER FULLY COOKED Shank Half Hams**  
 7 to 9 POUND AVG.  
**49¢ LB.**

**NORBEST POP-UP TURKEYS**  
 WITH THE MAGIC THERMOMETER  
 USDA GRADE A **39¢ lb.**

USDA INSPECTED **EASTERN DUCKS .... 49¢ lb.**  
 HONEYSUCKLE BONELESS TURKEY ROLL EASY SLICING 2 LB. 8 OZ. **\$3.29**

FRESH, LEAN, RED **GROUND BEEF**  
 FAMILY PAK 3 LBS. or MORE **39¢ lb.**

**HORMEL BONELESS CURE 81 HAM**  
 WITH THAT SPECIAL FORMULA SUGAR CURE **\$1.49 lb.**

LUER FULLY COOKED • 4-6 LB. AVG.  
**BUTT END HAM ..... 59¢ lb.**  
 CENTER CUT **HAM SLICES . 98¢ lb.**

• HORMEL  
 • GINGHAM  
 • IOWA FARMS  
**SLICED BACON**  
 ONE POUND PKG. **59¢**

**JONES PORK LINK SAUSAGE**  
 THE FINEST  
 1 LB. PKG. **98¢**

RATH PORK ROLL **SAUSAGE**  
 1 LB. ROLL **49¢**

**FISH and SEAFOOD**

BROKEN SIZES **GREEN SHRIMP 69¢ lb.**  
**WESTERN OYSTERS 79¢ 10 OZ. JAR**

**BLUE DIAMOND COOKED SHRIMP 98¢ 8 OZ. PKG.**



**DUBUQUE ROYAL BUFFET**

**Ham**  
 7 \$5.79 POUND CAN  
 4 LB. CAN **\$3.49**

**GOLDEN CREME GRADE A SOUR CREAM**  
 PINT CARTON **47¢**  
 HALF PINT CARTON ..... **25¢**

delicatessen **Foods Co.**

**LASCO READY TO SERVE SHRIMP COCKTAIL**  
 INDIVIDUAL SERVING SIZE  
**3 4 OZ. GLASSES \$1**

**WISCONSIN BRAND CREAM CHEESE**  
 PEN & QUILL PARTY DIPS  
 8 OZ. PKG. **29¢**  
 ALL FLAVORS 8 OZ. CUP **33¢**

**BOB'S BLEU CHEESE DRESSING**  
 16 OZ. JAR **69¢**  
 ROQUEFORT **89¢**  
 1000 ISLAND **59¢**