

# U.S.D.A. 'CHOICE' BEEF!

## VALUABLE BLUE CHIP STAMPS



STAMP CERTIFICATES FOR A TURKEY, HAM, LIQUOR OR GENERAL MERCHANDISE.

BEST NORBEST with the TENDER TIMER

# DOM TURKEYS

18 to 22 POUNDS U.S.D.A. GRADE 'A'

PLUMP NORBEST

U.S.D.A. GRADE 'A'

**HENS 33<sup>c</sup>**  
lb.

**31<sup>c</sup>**  
lb.

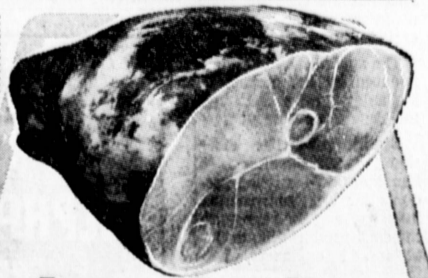
BLUE CHIP STAMPS



BLADE CUT  
**CHUCK ROAST**

U.S.D.A. CHOICE BEEF ONLY  
**39<sup>c</sup>**  
lb.

BLUE CHIP STAMPS



Luer Quality  
**HAM**

SHANK HALF  
**45<sup>c</sup>**  
lb.  
CENTER HAM SLICES 98¢

- WILSON'S FESTIVAL or FARMER JOHN TAVERN **BONELESS HAMS** \$1<sup>39</sup> lb.
- EUER'S IOWA FARMS **SLICED BACON** 1-lb. pkg. **59<sup>c</sup>**
- FRYING **CHICKEN GIZZARDS** **49<sup>c</sup>** lb.
- FRYING **CHICKEN LIVERS** **59<sup>c</sup>** lb.
- SWIFTS-BROWN'S SERVE **Breakfast SAUSAGE** 8-oz. pkg. **59<sup>c</sup>**

**RIB or FAMILY STEAKS**  
U.S.D.A. CHOICE BEEF ONLY  
**89<sup>c</sup>**  
lb.

- FRESH COUNTRY STYLE-BULK **PORK SAUSAGE** **49<sup>c</sup>** lb.
- U.S.D.A. GRADE 'A'-4-6 LBS. AVERAGE **ROASTING CHICKENS** **59<sup>c</sup>** lb.
- FROZEN-HONEYSUCKLE **TURKEY ROAST** 2 1/2-lb. pkg. **3<sup>39</sup>**
- FRESH **WESTERN OYSTERS** 12-oz. jar **89<sup>c</sup>**
- COOKED AND PEELED **SALAD SHRIMP** **1<sup>69</sup>** lb.

U.S.D.A. Choice Beef Only-Rolled  
**BONELESS ROAST** CROSS RIB **89<sup>c</sup>** lb.  
COUNTRY STYLE **PORK SPARERIBS** **59<sup>c</sup>** lb.

**BETTY CROCKER CAKE MIXES**  
ALL VARIETIES EXCEPT ANGEL FOOD  
**3 \$1**  
reg. pkgs.

BLUE CHIP STAMPS

**FLAV-R-PAC ORANGE JUICE**  
100% PURE FROM FLORIDA  
**5 \$1**  
6-oz. cans

BLUE CHIP STAMPS

**ALL FLAVORS GOLDEN CREME CATERING ICE CREAM**  
1/2 gallon  
**69<sup>c</sup>**

BLUE CHIP STAMPS

**LAURA SCUDDER'S MAYONNAISE**  
**43<sup>c</sup>**  
QUART JAR

- CASE SWAYNE **Yams in Syrup** 40-oz. can **39<sup>c</sup>**
- LINDSAY-LARGE **Pitted Ripe Olives** tall 300 can **49<sup>c</sup>**
- MAGIC CHEF **Sweet Gherkins** 22-oz. jar **39<sup>c</sup>**
- ITALIAN, 1000 ISLAND, 1890 FRENCH **Milani Dressings** 3 8-oz. btl. **\$1**
- GOLDEN CREME-PACKAGE OF 12 **Brown 'n Serve Rolls** **33<sup>c</sup>**
- HEAVY DUTY ALUMINUM (INCL. 6c OFF) **Reynolds Foil** 18"x25-ft. roll **59<sup>c</sup>**

Regular or Corn Bread **Cubbison's Stuffing** mix 13-oz. pkg. **49<sup>c</sup>**

- QUAKER STATE-SLICED OR WHOLE **MUSHROOMS** 2 1/2-oz. jar **33<sup>c</sup>**
- GOLDEN GATE **SPANISH OLIVES** 3 15-oz. jars **\$1**
- FRESH KIST-SLICED-CHUNK **PINEAPPLE** TIDBITS CRUSHED 4 16-oz. cans **89<sup>c</sup>**
- TOM SCOTT **MIXED NUTS** 13-oz. can **59<sup>c</sup>**

GRADE 'AA' **Darigold BUTTER** 1-lb. pkg. **85<sup>c</sup>**

DECORATED PAPER **SCOTT TOWELS** big roll **33<sup>c</sup>**

FRESH KIST **Pineapple JUICE** jumbo 46-oz. cans **\$1**

**DELICATESSEN**  
DUBUQUE SANDWICH STYLE  
**CANNED HAMS \$2.98** 3-lb. can  
BONELESS-COOKED-NO WASTE

- FOOD GIANT **PARTY DIPS** 3 8-oz. cups **\$1**  
CLAM, FRENCH ONION, GARLIC, BLEU CHEESE
- LASCO **SHRIMP COCKTAIL** 3 4-oz. jars **\$1**
- NALLEY'S-XLNT-ASSORTED-GELATIN OR **FRESH SALADS** 3 15-oz. cups **\$1**
- KRAFT'S PHILADPHIA **CREAM CHEESE** 3 8-oz. pkgs. **\$1**
- MAYBUD-WISCONSIN-8-OZ. PKG. **Edam or Gouda Cheese** **59<sup>c</sup>**

**FROZEN FOODS**  
**GREEN GIANT VEGETABLES**  
IN BUTTER SAUCE (10-OZ. PKGS.)

- SHOE PEG CORN or CAULIFLOWER** WITH CHEESE **39<sup>c</sup>**
- LE SUEUR PEAS or BROCCOLI SPEARS** **43<sup>c</sup>**
- NIBLETS CORN (cream style)** **35<sup>c</sup>**
- MEYER'S BREAD HOT SLICES** 15-oz. pkg. **53<sup>c</sup>**
- BIRDSEYE COOL WHIP** quart size **53<sup>c</sup>** (INCL. 6c OFF)
- 3-COURSE-ASSORTED MORTON DINNERS** **65<sup>c</sup>**

**FRESH KIST PRODUCE**  
**NAVEL EXTRA FANCY ORANGES**  
LARGE SIZE **10<sup>c</sup>** lb.

- SUGAR RIPE PITTED PRUNES** 3 12-oz. cello bags **\$1**
- U.S. NO. 1-RED VELVET **SWEET YAMS** 2 LBS **29<sup>c</sup>**
- OCEAN SPRAY-EXTRA FANCY **CRANBERRIES** 1-lb. cello pkg. **29<sup>c</sup>**
- LARGE BROWN (excellent for stuffing) **MUSHROOMS** 1/2-lb. **39<sup>c</sup>**

- MARTHA WASHINGTON **Del Monte Asparagus** ALL GREEN 0 1/2-oz. picnic can 55<sup>c</sup> 300 can 63<sup>c</sup>
- FROZEN-ASSTD. 10-INCH **MORTON'S DELUXE PIES** 99<sup>c</sup>
- WISHBONE 8-OZ. BTL. **CAESAR DRESSING** 49<sup>c</sup>

- COFFEE-ALL GRINDS **BUTTER-NUT** 1-lb. can 69<sup>c</sup>
- BATHROOM-2 ROLL PKG. **SOFT-WEVE TISSUE** 29<sup>c</sup>
- KEEP FOODS FRESH **SARAN WRAP** 50-ft. roll 39<sup>c</sup>

- BLUEBERRY-22-OZ. CAN **COMSTOCK PIE FILLING** 59<sup>c</sup>
- MIRACLE WHIP-(Incl. 4c off) **KRAFT'S MARGARINE** 1-lb. pkg. 29<sup>c</sup>

- BREAKFAST-2 1/2-OZ. CAN **START ORANGE DRINK** 25<sup>c</sup>
- GROUND-1 1/4-OZ. CAN **SCHILLING'S CINNAMON** 33<sup>c</sup>

