

# U.S.D.A. 'CHOICE' BEEF!

VALUABLE BLUE CHIP STAMPS  
 GIFT CERTIFICATES FOR A TURKEY, HAM, LIQUOR OR GENERAL MERCHANDISE.

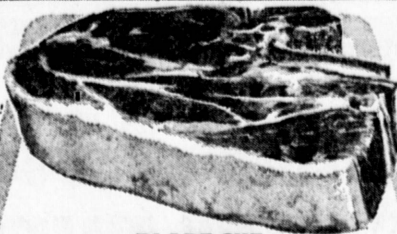


## FROZEN NORBEST with the TENDER TIMER TOM TURKEYS

18 to 22 POUNDS

PLUMP NORBEST  
 U.S.D.A. GRADE 'A'  
**TOM TURKEYS** 33<sup>c</sup> lb.  
 10 to 14-lbs.

**31<sup>c</sup>** lb.



BLADE CUT  
**CHUCK ROAST**

U.S.D.A. CHOICE BEEF ONLY  
**39<sup>c</sup>** lb.



Luer Quality  
**HAM**

SHANK HALF  
**45<sup>c</sup>** lb.

CENTER HAM SLICES 98<sup>c</sup>

YS  
 MS  
 3<sup>c</sup> lb.

WILSON'S FESTIVAL or FARMER JOHN TAVERN  
**BONELESS HAMS** \$1<sup>39</sup> lb.  
 LUER'S IOWA FARMS  
**SLICED BACON** 1-lb. pkg. 59<sup>c</sup>  
 FRYING  
**CHICKEN GIZZARDS** 49<sup>c</sup> lb.  
 FRYING  
**CHICKEN LIVERS** 59<sup>c</sup> lb.  
 SWIFF'S—BROWN 'n SERVE  
**Breakfast SAUSAGE** 8-oz. pkg. 59<sup>c</sup>

**RIB or FAMILY STEAKS**  
 U.S.D.A. CHOICE BEEF ONLY  
**89<sup>c</sup>** lb.

FRESH COUNTRY STYLE—BULK  
**PORK SAUSAGE** 49<sup>c</sup> lb.  
 U.S.D.A. GRADE 'A'—4-6 LBS. AVERAGE  
**ROASTING CHICKENS** 59<sup>c</sup> lb.  
 FROZEN—HONEY-SUCKLE  
**TURKEY ROAST** 2 1/2-lb. pkg. 3<sup>39</sup>  
 FRESH  
**WESTERN OYSTERS** 12-oz. jar 89<sup>c</sup>  
 COOKED AND PEELLED  
**SALAD SHRIMP** 1<sup>69</sup> lb.

U.S.D.A. Choice Beef Only—Rolled  
**BONELESS ROAST** CROSS RIB 89<sup>c</sup> lb.  
 COUNTRY STYLE  
**PORK SPARERIBS** 59<sup>c</sup> lb.

FROZEN FANCY  
**FLAV-R-PAC GREEN PEAS**  
 10-oz. pkg.  
**10<sup>c</sup>**

MINOT  
 STRAINED OR WHOLE  
**CRANBERRY SAUCE**  
 tall 300 can  
**19<sup>c</sup>**

FROZEN  
**JOHNSTON'S PIES**  
 APPLE · PUMPKIN · MINCE  
 LARGE 9-INCH PIES  
**59<sup>c</sup>**

PURE VEGETABLE  
**SHORTENING CRISCO**  
 3-lb. can  
**69<sup>c</sup>**

41<sup>c</sup>  
 33<sup>c</sup>  
 1/2-oz. \$1  
 29<sup>c</sup>  
 29<sup>c</sup>  
 35<sup>c</sup>  
 39<sup>c</sup>  
 39<sup>c</sup>  
 43<sup>c</sup>  
 23<sup>c</sup>  
 23<sup>c</sup>  
 43<sup>c</sup>

LIBBY'S—HAWAIIAN  
**Pineapple Juice**  
 CASE SWAYNE  
**Yams in Syrup**  
 LINDSAY'S—LARGE—TALL 300 CAN  
**Pitted Ripe Olives** 49<sup>c</sup>  
 MAGIC CHEF  
**Sweet Gherkins** 22-oz. jar 39<sup>c</sup>  
 DINNER SIZE—3-PLY  
**Chiffon Napkins** pkg. of 50 29<sup>c</sup>  
 HEAVY DUTY ALUMINUM (INCL. 6¢ OFF)  
**Reynolds Foil** 18"x25" roll 59<sup>c</sup>

4 Jumbo 46-oz. cans \$1  
 40-oz. can 39<sup>c</sup>  
 13-oz. pkg. 49<sup>c</sup>  
 22-oz. jar 39<sup>c</sup>  
 pkg. of 50 29<sup>c</sup>  
 18"x25" roll 59<sup>c</sup>

Regular or Corn Bread  
**Cubbison's Stuffing** All Purpose Mix 13-oz. pkg. 49<sup>c</sup>  
 FRESH KIST  
**PINEAPPLE** SLICED • CRUSHED • TIDBITS • CHUNKS 4 16-oz. cans 89<sup>c</sup>

GOLDEN CREME—PKG. OF 12  
**Brown 'n Serve Rolls** 33<sup>c</sup>  
 THROWN PACK QUEEN—7 1/2-OZ. JAR  
**STAR STUFFED OLIVES** 59<sup>c</sup>  
 GHIRADELLI  
**CHOCOLATE CHIPS** 12-oz. pkg. 39<sup>c</sup>  
 MIXED ASSORTMENT  
**PLANTER'S NUTS** 13-oz. can 89<sup>c</sup>  
 STEMS AND PIECES  
**ERLAND Mushrooms** 6 2-oz. cans \$1  
 DECORATED PAPER  
**ZEE TOWELS** jumbo roll 29<sup>c</sup>

DELICATESSEN  
 DUBUQUE SANDWICH STYLE  
**CANNED HAMS** \$2<sup>98</sup> 3-lb. can  
 BONELESS—COOKED—NO WASTE  
 THANKSGIVING PARTY FOODS  
 FOOD GIANT  
**DIPS** 3 8-oz. cups \$1  
 LASCOS  
**Shrimp Cocktail** 3 4-oz. jars \$1  
 BUKO DANISH  
**CHEESE SPREADS** 3 3 1/2-oz. jars \$1  
 GOLDEN CREME  
**Assorted Yogurts** 5 8-oz. cups \$1  
 FOOD GIANT BLEU CHEESE OR 1000 ISLAND  
**SALAD DRESSINGS** pint jar 59<sup>c</sup>

FROZEN FOODS  
 KERN'S  
**SLICED Strawberries** 4 10-oz. pkgs. \$1  
 MORTON'S  
**Macaroni & Cheese** 8-oz. pkg. 25<sup>c</sup> 20-oz. pkg. 39<sup>c</sup>  
 Spaghetti & Meat 8-oz. pkg. 29<sup>c</sup>  
 REDDI-WHIP  
 7-oz. size 57<sup>c</sup>  
 ROB'S WHIP-O  
 TOPPING 7-oz. size 39<sup>c</sup>  
 IMO IMITATION  
 SOUR CREAM 8-oz. 21<sup>c</sup> 16-oz. 37<sup>c</sup>  
 RICH'S  
**COFFEE RICH CREAMER** 16-oz. can 27<sup>c</sup>  
**Hawaiian Punch** 12-oz. can 35<sup>c</sup>  
**CAL FAME Orange Juice** 4 6-oz. cans \$1  
 12-oz. can 49<sup>c</sup>

FRESH KIST PRODUCE  
**BANANAS** CENTRAL AMERICAN  
 GOLDEN RIPE!  
 9 lb.  
 SWEET AND JUICY—ALMERIA  
**GRAPES** 2 29<sup>c</sup>  
 CALIFORNIA'S FINEST—1 1/2-LB. CUP  
**ZAHIDI DATES** 39<sup>c</sup>  
 BANANA  
**SQUASH** THICK MEAT 5<sup>c</sup> lb.

6 1/2-OZ. CANS  
**PURINA CAT FOOD**  
 Mackerel 2 for 35c  
 Tuna 2 for 37c  
 Beef by-products, Country Dinner  
 Chicken & Kidney  
 2 for 39c

MAINTENANCE  
**LIPTON DINNERS**  
 Chicken Baronet  
 Beef Stroganoff  
 Ham Cheddaron  
 reg. 77<sup>c</sup>

PILLSBURY  
**FROSTING MIXES**  
 Creamy Fudge • Creamy Vanilla  
 Fluffy White • Milk Chocolate  
 Double Dutch Chocolate  
 Lemon reg. 41<sup>c</sup>  
 Orange reg. 41<sup>c</sup>  
 Coconut Almond—49c—reg. pkg.

DEL MONTE  
 Spinach (303 can) .....23c  
 Spinach (no. 2 1/2 can) .....33c  
 Sliced Beets (303 can) .....29c  
 Tiny Whole Beets (303 can) 33c  
 PEAR HALVES 35<sup>c</sup> no. 303 can

NUTS  
 69<sup>c</sup>  
 63<sup>c</sup>

MAZOLA MARGARINE (incl. 3c off) 1-lb. pkg. 35<sup>c</sup>  
 BATHROOM SCOTT TISSUE 4-roll pkg. 39<sup>c</sup>  
 HUNT'S TOMATO JUICE 32-oz. can 31<sup>c</sup>  
 SOAP FILLED BRILLO PADS pkg. of 10 31<sup>c</sup>

