

PRESENTING THE 1969 RENAULT 10 AND 16

RENAULT 16
SEDAN WAGON



BRAND NEW 1969

RENAULT 16

A compact car with the big innovation. Sedan comfort plus station wagon utility. The Renault 16 is quickly and easily converted from a comfortable sedan to a big-capacity station wagon. Here is a sedan-wagon in a compact size that handles like a heavier sedan on the highway.

\$2489

WHICH RENAULT FOR YOU?

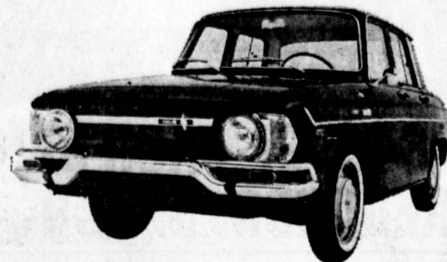
SEE ALL THE 1968

RENAULTS

ON DISPLAY NOW AT

PENINSULA MOTORS

RENAULT 10
ECONOMY CHAMP



BRAND NEW 1969

RENAULT 10

A compact car with outstanding economy plus style, comfort, dependability, performance! The Renault 10 is an economy car that is also outstanding in its price field for many other reasons. It is a luxuriously comfortable sedan that is fun to drive, easy to park and maneuver like a sports car.

\$1799

FREE! RENAULT-10 or TRIP TO TAHITI FOR 2
Register at Peninsula Motors showroom. Registration ends November 15, 1968. You need not be present for drawing. Winners' names will be posted at the participating dealerships. Winners only qualification needed is to be a licensed driver.
In event that a qualified registrant purchases a new Renault-10 after start of this contest and prior to November 15, 1968, and he or she subsequently is the winner of a new Renault-10, a refund of the full purchase price of the car will be made.

NEW 1969 RENAULT NEW CAR TRADE-INS

<p>'67 RENAULT 10 Red, black interior. Low miles. TSX 595 (Several Others to Choose From)</p> <p>\$1295</p>	<p>'66 RENAULT DAUPHINE Red, vinyl interior. Radio, heater, 4-speed. RYB 403</p> <p>\$895</p>	<p>CLOSE-OUT SALE 1968 RENAULT 10 Executive cars. Fantastic savings while they last. Michelin X tires, vinyl interior, luxurious reclining seats, 4 wheel disc brakes. #U1175</p> <p>\$1599 + T&L</p>	<p>'62 RENAULT DAUPHINE 4 speed. Completely rebuilt engine, new interior, good tires. Looks and runs good. MAA 712</p> <p>\$495</p>	<p>'67 PEUGEOT 404 Sedan. Burgundy finish, fawn interior. Extra nice. TAL 986</p> <p>\$1895</p>
<p>'65 RENAULT 8 White, red interior. R&H, whitewalls. NFC 163</p> <p>\$795</p>	<p>'66 1/2 RENAULT 8 Radio, heater, 4-speed. Low mileage. White finish, red interior. TPV 756</p> <p>\$995</p>		<p>'66 1/2 RENAULT Choice of 2. White, red vinyl interior. Automatic transmission. Radio, heater, whitewalls. TSY 787 and TBM 280</p> <p>\$995</p>	<p>'66 PEUGEOT "404" Sedan. Sharp! Sacrifice!</p> <p>\$1495</p>

PENINSULA MOTORS **RENAULT**
25308 CRENSHAW BLVD. — 325-7401
2 Blocks North of Pacific Coast Hwy

"NEW" '68 CORTINA
MODEL C
\$1873³⁴ FULL PRICE
Plus Freight, Tax and License

'67 LINCOLN \$4199
Continental 4-Door. Full power. Excellent condition. Black trim & Landau top. Stock #PW-411.

'68 Mustangs \$2599
3 To choose from. New car warranty remaining. V-8, automatic transmission, radio & heater, power steering & all the goodies. Low as

'66 T-BIRD \$2899
Town Landau. 1 owner. Well cared for. Low mileage. A-1 warranty. Stock #PW-152.

'67 T-BIRD \$3799
Landau 3-Door Hardtop. Full Power. White with black Landau top & trim. Sharp. Low mileage. Stock #PW-154

'66 FORD F100 \$2199
Heavy Duty Long Bed Pickup. V-8. Crossmatic, radio heater, air conditioning. Low mileage. Stock #N-64. A-1 Warranty. Full Price

'67 FORD \$2899
Country Squire Station Wagon. Has radio, heater, automatic transmission, factory air condition. Balance of factory warranty. Stock #PW-62. Full Price

DISCOVER LOW PRICES

'64 MERCURY \$999
4-Door. Motor completely overhauled by us. Nice interior and finish. A real buy. W-743

'61 FORD \$249
Galaxie 500 3-Door. Needs metal paint and mechanical work. Mechanic's special. W-773

'68 FIAT \$2199
3-Door Hardtop Sprint 850. Only 2700 miles. Like new. Balance of factory warranty. Stock #W-460. Full Price

'63 VW \$999
Radio. Extra clean. Runs good. W-944

'63 PLYMOUTH \$899
Station Wagon. Slant six. Automatic, radio, heater. W-814

'63 CHEVROLET \$1499
Long Bed Pickup. Radio, heater, air conditioning, custom cab. A-1 warranty. 5K. W-843. Full Price.

'66 FORD \$1899
Ranchero Pickup. Radio, heater, automatic transmission. Like new condition. A-1 Warranty. Stock #PW-433. Full Price.

'65 MERCURY \$2099
Wagon. Colony Park. Factory air, V-8, auto, R&H, power steering, luggage rack, power seat. Extra nice. W-823

'63 OLDSMOBILE \$599
Convertible. Soft top. V-8, automatic transmission, etc. Original. Clean. Runs good. Stock #W-876.

KOTT & SMOLAR FORD

USED CARS TE 5-6624
NEW CAR DEPARTMENT AND SERVICE TE 5-6621
336 West Anaheim, Wilmington — 3 Miles West of the Long Beach Freeway — 11 Blocks East of Harbor Freeway

'62 FORD \$899
9-passenger Country Squire Wagon, real clean. Above average. Factory air, V-8, auto, R&H. W-775

'64 DODGE \$899
2-Door. 500 series. 4-speed. A-1 warranty. W-794

'67 CHEVROLET \$1999
Van. V-8, automatic transmission, radio, heater, 78 series. Clean. Good running. Windows one side & back. Stock #W-434

'67 CHEV. \$2299
Camaro 3-Door Hardtop. V-8, radio, heater, automatic transmission, power steering. Low mileage. Balance of factory warranty. Stock #W-932. Only.

'66 FORD \$1399
Sedan. Falcon 4-Door. Automatic, radio, heater. Real clean. Good running. PW-444

'65 CHEVROLET \$999
Pickup. Short bed economy 4 cylinder engine. Stock #U1805. A-1 warranty. FULL PRICE

'65 RAMBLER \$1199
4 cyl. AT. R&H. 3-Dr. 440 Hardtop. A-1 warranty. Stock #W-546. Fully reconditioned. FULL PRICE

'64 FORD \$999
Country Sedan. V-8. 3-speed standard transmission. Stock #W-605. A-1 warranty. FULL PRICE

'67 COUGAR \$2599
2-Dr. Htdp. Near new, auto, R&H, power steering, etc. New car warranty remaining. W-819

'63 OLDS \$1299
Cutlass Sport Coupe. V-8 engine, power steering, factory air conditioning. A-1 warranty. Stock #W875. FULL PRICE

'65 FORD \$1899
L.T.D. 4-Door Hardtop Sedan. Radio, heater, automatic transmission, factory air conditioning. 300 cu. in. engine. A one owner, low mileage, fine car. Stock #W-945. Only

'67 FORD \$2799
Galaxie 500 4-Door Hardtop. Radio, heater, automatic transmission, power steering, factory air condition. Low mileage. Balance of factory warranty. Stock #W-959. Full Price

'66 FORD \$1399
2-Door Custom 500. Automatic. Economy. Good performing. 240 cubic inch 4 cylinder, radio, heater. Stock #W-883.

'63 FORD \$1999
F 600 3-Ton Flat bed with Rack. Has been completely reconditioned. V-8. A-1 Warranty. Stock #W-952. Full Price

KOTT & SMOLAR

336 W. ANAHEIM, WILMINGTON
3 MILES WEST OF LONG BEACH FREEWAY ...
11 BLOCKS EAST OF HARBOR FREEWAY.

USED CAR DEPARTMENT — TE 5-6624
NEW CAR DEPARTMENT & SERVICE — TE 5-6621