

Harbor College Lists Fall Forum Lecturers

Harbor College's Fall Forum Lecture Series will begin October 21 with Dr. Joel Fort speaking on "Social Conflict and Social Change" at 8 p.m. in Seahawk Center.

He will be followed by other lecturers to round out the series.

Dr. Fort, a physician specializing in public health and social psychiatry, is an expert on drug abuse. He was creator and former director of San Francisco's Center for Social Problems, the first program in the country to provide treatment, education and research on all forms of drug abuse and crime while working with the community.

He will be followed on November 21 by Jens Bjerre,

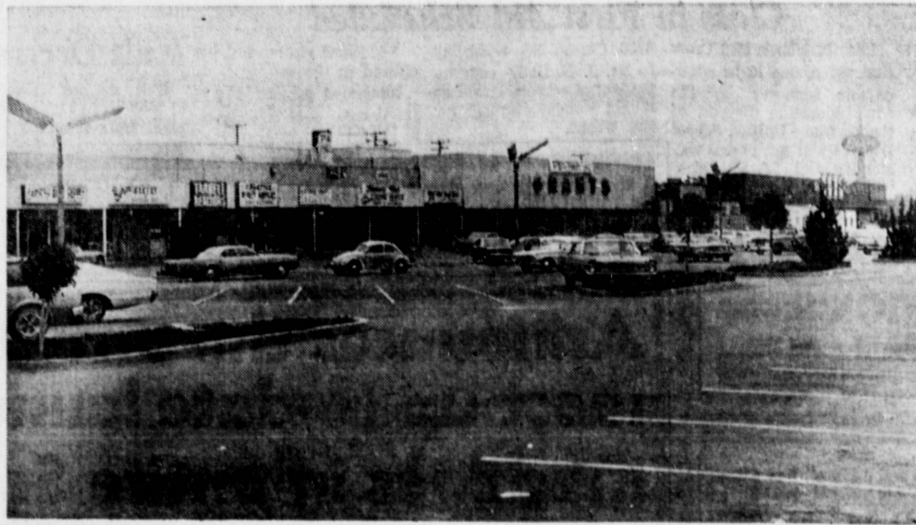
Danish journalist, anthropologist and explorer presenting his film tracing China's ancient history, revolution and changing life in China today.

Faculty member Hal Garvin on December 3 will recount, by means of a slide lecture, his experiences with his family during a sabbatical trip to Europe.

One of America's leading philosophers, Dr. Sidney Hook, will speak on "Academic Freedom and Student Rights" January 15.

The lecture series presented as a public service by the Associated Students and the faculty is free to the public.

Appearing at noon only on January 22, James Moseley will speak on "Unidentified Flying Objects."



MOONLIGHT SALE . . . Stores in the Carson Center, located at Carson Street and Normandie Avenue, will hold a "Moonlight Sale" Friday, Oct. 25. The sales event, the first in a series of special events to be held each month, will feature items

from every store in the center. Three floodlights will be set up in the parking lot from 7 to 10 p.m. for the event. Special advertisements listing specials to be featured will appear in the Oct. 23 editions of this newspaper.

Thomas Wins Backing Of Health Professions

The Allied Health Professions today announced that Assemblyman Vincent Thomas has been unanimously endorsed for re-election in the 68th Assembly District by the 11 member associations.

"This endorsement was made in recognition of your interest in good public health legislation and the maintaining of high professional standards," the Allied Health Professions wrote Thomas.

The 11 member association: California Medical Association, California Dental Association, California Pharmaceutical Association, California Nurses Association, California Hospital Association, Public Health League, Southern California Dental Association, California Association of Dispensing Opticians, California

Podiatry Association, California Veterinary Medical Association, and the California Chapters of the American Physical Therapy Association.

THOMAS WAS instrumental in obtaining approval to establish San Pedro Community Hospital, and has been active in sponsoring medical legislation sought by professional groups.

The veteran San Pedro legislator, a Democrat, is the dean of the lower house by virtue of longer uninterrupted service than any other member. He is seeking election to his 15th two-year term in the Assembly at the Nov. 5 election.

"I am pleased and gratified by the endorsement of the Allied Health Professions," Thomas said.

BETTER FOODS MARKETS

Free! 750 BONUS

WHEN YOU PURCHASE \$75* IN A 30-DAY PERIOD OR LESS at YOUR BETTER FOODS MARKET



Extra Blue Chip STAMP SPECIALS!

100 EXTRA Blue Chip Stamps With Purchase of Any of These Four Meat Specials! Listed Below

- | | |
|---|--|
| ROUND BONE BEEF ROAST lb. 69¢ | Roller Shoulder Clod BONELESS ROAST lb. 89¢ |
| FARMER JOHN—Whole SMOKED HAM lb. 59¢ | Fresh, Lean Ground Chuck lb. 1⁸⁹ |

50 EXTRA Blue Chip Stamps With Purchase of Any of These Four Meat Specials! Listed Below

- | | |
|--|---|
| SLICED GREENLAND HALIBUT lb. 59¢ | Tender, Lean Pork Cutlets lb. 98¢ |
| BONELESS STEAK TOP SIRLOIN lb. 1⁵⁹ | Lean, Tender Barbecue Steak lb. 1⁰⁹ |

LEAN BRISKET

CORNER BEEF

WHOLE or POINT HALF

Tender, Delicious

lb. **49¢**

Fresh

SPARERIBS

Lean, Meaty Eastern Park

lb. **59¢**

POT ROAST

U.S.D.A. Choice Steer Beef

CHUCK

Tender Roast

lb. **39¢**

Juicy, Flavorful CHUCK STEAK Choice lb. 49¢
Boneless, Tender FAMILY STEAK Delicious lb. 89¢
Lean, Meaty Chunks of Beef BONELESS STEW lb. 79¢
Tenderized, Flavorful CUBE STEAK Lean lb. 1⁰⁹

There's MORE for YOU at Better Foods Markets... MORE Exciting Ad Specials... MORE Blue Chip Stamps... MORE

Crisp, Red DELICIOUS

APPLES

U.S. No. 1, Medium Size MOUNTAIN GROWN

71¢ -lbs.

Stack Up Now for Halloween Trick or Treat

CANDIES

Big Variety, Each Piece Wrapped FANCY QUALITY

3¹ lbs.

Green, Solid Heads

CABBAGE

Extra Fancy Crisp, Fresh

5 lbs.

EXTRA LARGE

PRUNES

Extra Fancy Moist Pack

1-lb. Cello Bag **39¢**

MJB

COFFEE

All Grinds

3 -lb. Can **\$1.69**

You Save 30¢

New! Barbecue

VITTLES

Your Choice

Bugles, Pizza Spins, Whistles, Daisies, Buttons and Bows

—from Betty Crocker

39¢

\$2,000,000 PHONE SWEEPSTAKES

AJAX

Laundry Detergent

10' Off Giant Box **69¢**

AJAX Double Bleach 3' Off Giant **24¢**

Liquid Cleaner All-Purpose, AJAX 20' Off King Size **89¢**

KHJ TV SPECIAL

MICRIN

Mouthwash

12-oz. Bottle, Reg. 1.15 **99¢**

3 Piece Crystal BOWL SET Only **99¢**

Johnson's Frozen

FRUIT PIES

Apple, Pumpkin, Mince, Peach, or Strawberry-Rhubarb

FULL 9-INCH PIE

2-lbs., 2-oz. Each **55¢**

Pacific's Crisp Fresh Saltines

STA-CRISP CRACKERS

Full Pound Box

Las Vegas Holiday Offer on Box

23¢

XLNT HACIENDA—Frozen

DINNERS or TACOS Save 10' Reg. Pkg. **39¢**

XLNT HACIENDA—Frozen Taco-Elitas or

ENCHILADAS Save 17' Reg. Pkg. **3 for \$1**

ORE-IDA FROZEN POTATO (O'BRIEN), 1 1/2-lb., 39¢

HASH BROWNS 12-oz. Pkg. **5 for \$1**

ORE-IDA Pixie Crinkle, Shoestring (12-oz.) or

TATER-TOT POTATOES Frozen 1-lb. Pkg. **3 for \$1**

VAN DE KAMP Frozen

CHICKEN PIE 10 1/2-oz. Each **45¢**

JOHNSON'S FURNITURE POLISH

PLEDGE Regular or Lemon Save 10' 7-oz. Spray **79¢**

DETERGENT—P&G's

GAIN Special Offer—Save 14' Giant Size **65¢**

- | | |
|--|---|
| MJB COFFEE 69¢ 2-lb. can 1.37 | FRESH EGGS—Daisy Fresh Med. Doz. Large Doz. Ex. Lge. 55¢ 59¢ 63¢ |
| Vande Kamp Frozen HALIBUT, 8-oz. pkg. 79¢ | Better Foods Eggs Med. Doz. Large Doz. Ex. Lge. 57¢ 61¢ 65¢ |
| Van de Kamp Pineapple Coke UPSIDE DOWN, 17-oz. Frozen 79¢ | |
| Cinnamon Wafers SUNSHINE, 10-oz. pkg. 33¢ | |

- | | |
|---|--|
| MAPLE SYRUP, Cary's, 8-oz. bottle .69¢ | COFFEE, French Market, 1-lb. can .89¢ |
| RED CABBAGE, Greenwood, 303 glass .35¢ | BOUILLON, Stearns, pkg. of 25 .39¢ |
| OLIVE OIL, Pompaian, 4-oz. bottle .29¢ | LIBBY PLUMS, 303 can .33¢ |
| POTTED MEAT, Libby, No. 1/4 can .25¢ | |