

# TED GREEN CHEVROLET

 <b>'68 CHEVROLET IMPALA CUST. CPE.</b> Factory air conditioning, Landau top, radio & heater, power steering, automatic transmission, whitewall tires. Stock #P-388. <b>\$3199</b>	 <b>'65 VOLKSWAGEN 2-DOOR</b> Radio & heater, 4-speed transmission. Stock #1342-A. <b>\$1399</b>	 <b>'64 CHEVROLET IMPALA SPORT CPE.</b> V-8, automatic transmission, radio, heater, power steering. Stock #P-378. <b>\$1099</b>	 <b>'67 FIREBIRD HARDTOP COUPE</b> Factory air conditioning, automatic transmission, radio & heater, power steering, vinyl top. Stock #P-379. <b>\$2799</b>
<b>'68 MALIBU SPORT COUPE</b> V-8, automatic transmission, power steering, radio, heater, whitewalls. Still under factory warranty. Stock #P-335. <b>\$2799</b>	 <b>'64 MGB ROADSTER</b> 4-speed, radio, heater, tonneau cover, complete top, wire wheels. A black beauty. Stock #414A. <b>\$1499</b>	 <b>'65 DODGE HARDTOP COUPE</b> Coronet 440, V-8, automatic transmission, radio, heater, power steering. Save \$\$\$! Stock #P-321-A. <b>\$1599</b>	 <b>'65 CAMINO CUSTOM PICKUP</b> V-8, automatic transmission, power steering, radio, heater, whitewalls. Completely OK reconditioned. Hurry! Hurry! <b>\$1399</b>
 <b>'67 CORVETTE STING RAY COUPE</b> 4-speed, 427 engine, power windows, 10,000 actual miles. Immaculate. Stock #47A. <b>\$3999</b>	 <b>'66 CHEVROLET BEL AIR 4-DOOR</b> Factory air conditioning, V-8, automatic transmission, radio, heater, power steering, whitewalls. Stock #P-309. <b>\$1699</b>	 <b>'62 MERCURY COLONY PARK WGN.</b> Factory air conditioning, automatic transmission, radio, heater. Immaculate 1 owner car. Stock #P-307A. <b>\$699</b>	 <b>'64 BUICK SKYLARK STA. WGN.</b> Factory air condition, automatic transmission, power steering, radio, heater. 1 owner immaculate car. Stock #1220-A. <b>\$1499</b>
<b>'61 MONZA 2-DOOR COUPE</b> Automatic transmission, radio, heater, whitewall tires. Stock #1019-A. <b>\$599</b>	 <b>'63 NOVA STATION WAGON</b> Automatic transmission, radio, heater, whitewall tires. Stock #1395-A. <b>\$699</b>	 <b>'67 VOLKSWAGEN 2-DOOR SEDAN</b> The Bug. Radio, heater, 4-speed. Stock #P-390. <b>\$1499</b>	 <b>'66 MUSTANG HARDTOP COUPE</b> Factory air conditioning, automatic transmission, power steering, V-8, radio, heater, whitewalls. Stock #P-418. <b>\$2499</b>

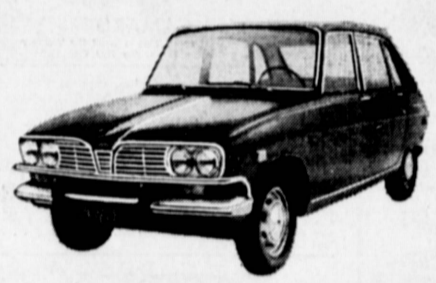
USED CAR DEPARTMENT—378-0219

# TED GREEN CHEVROLET

HAWTHORNE BLVD. NEAR 101 HIGHWAY IN TORRANCE

## PRESENTING THE 1969 RENAULT 10 AND 16

**RENAULT 16**  
SEDAN WAGON



**RENAULT 16**

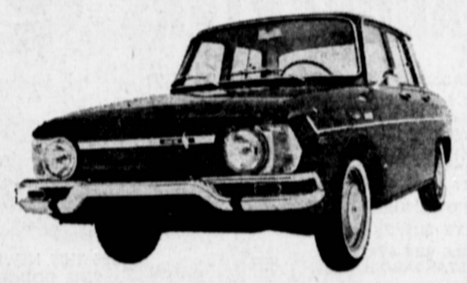
A compact car with the big innovation. Sedan comfort plus station wagon utility. The Renault 16 is quickly and easily converted from a comfortable sedan to a big-capacity station wagon. Here is a sedan-wagon in a compact size that handles like a \$2485 heavier sedan on the highway.

**\$2485**

# WHICH RENAULT FOR YOU?

SEE ALL THE 1969 RENAULTS ON DISPLAY NOW AT PENINSULA MOTORS

**RENAULT 10**  
ECONOMY CHAMP



**RENAULT 10**

A compact car with outstanding economy plus style, comfort, dependability, performance! The Renault 10 is an economy car that is also outstanding in its price field for many other reasons. It is a luxuriously comfortable sedan that is fun to drive, easy to park and maneuver like a sports car.

**\$1795**

### NEW 1969 RENAULT NEW CAR TRADE-INS

<b>'67 RENAULT 10</b> Red, black interior. Low miles. TSX 595 <b>\$1395</b>	<b>'66 RENAULT DAUPHINE</b> Red, vinyl interior. Radio, heater, 4-speed. RYB 403 <b>\$895</b>	<b>'67 RENAULT DAUPHINE</b> White, red interior. Whitewalls, 11,000 miles. VGR 518 <b>\$995</b>	<b>'62 RENAULT DAUPHINE</b> Light blue. Automatic, radio, heater, X tires. DYB 100 <b>\$595</b>	<b>'67 RENAULT 10</b> Dark green, black vinyl interior. 4-speed, radio, heater, X tires. UTY 937 <b>\$1395</b>	<b>'66 RENAULT Caravelle</b> With steel top and soft top. White, black interior. 4-speed, radio, heater and whitewalls <b>\$1495</b>
<b>'65 RENAULT 8</b> White, red interior. R&H, whitewalls. NFC 163 <b>\$850</b>	<b>'66 RENAULT 8</b> Turquoise, automatic, R&H & whitewalls. RSZ 363 <b>\$895</b>	<b>'66 1/2 RENAULT</b> Choice of 2. White, red vinyl interior. Radio, heater, whitewalls. TSY 787 and TBM 280 <b>\$1095</b>	<b>'64 RENAULT DAUPHINE</b> 4 speed. Completely rebuilt engine, new interior, good tires. Looks and runs good. MAA 712 <b>\$495</b>	<b>'67 FORD CORTINA</b> Radio, heater, automatic. TPN 426 <b>\$1295</b>	<b>'66 PEUGEOT</b> "404" Sedan. Sharp! Sacrificed! <b>\$1495</b>

**PENINSULA MOTORS RENAULT**  
 25308 CRENSHAW BLVD. — 325-7401  
 2 Blocks North of Pacific Coast Hwy