



# At McMahan's... "HAPPY PEOPLE ARE OUR BUSINESS"

## ROOM-SIZE REMNANTS

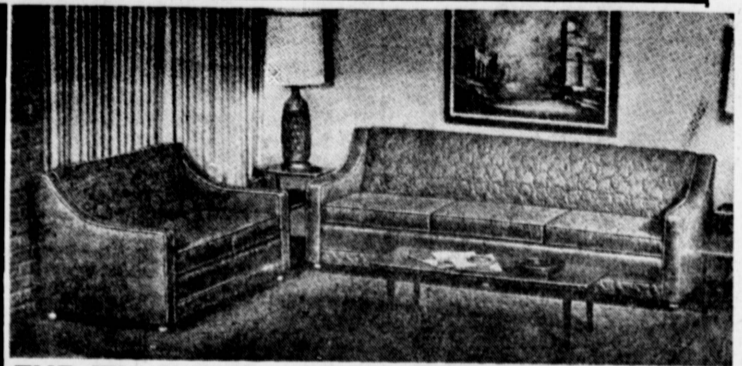
**NYLON-ACRILAN  
WOOL BLENDS  
9 x 12 TO 12 x 15**

9x12 FROM **\$39**

**Maple  
Finish  
CAPTAIN'S  
CHAIR**

Salem Maple  
Finish!  
**\$10<sup>89</sup>**

LIMIT 4 PER CUSTOMER



### THE JEM 92-INCH SOFA & 54-INCH LOVE SEAT Covered in custom quilted figured damask!

Here's a sofa value you'll find hard to beat... or even equal! Note the easy, graceful lines, the attractive piping trim, and the look of custom quilted luxury. The "Jem" is upholstered in custom quilted damask. You'll find a magnificent selection of colors too... everything from a rich Mediterranean Blue to mellow Antique Gold. Picture the "Jem" in your own home... imagine the appearance of your living room with the addition of a rich, custom quilted sofa.

**SAVE \$30**  
**\$248**  
\$11.85 MONTH  
SOFA & LOVE SEAT

### ROLL-AWAY BED

Complete with  
foam mattress!

Reg. \$44.95 **\$33**



This handy 'roll-away' bed is constructed of sturdy tubular steel with 2 1/2 inch nylon casters for easy rolling. Thick foam mattress is constructed to give complete comfort. Folds easily for quick storage.



**ZENITH** \$379<sup>69</sup>

'The Bingham' \$17.85 MONTH

Decorator-compact table model television with vinyl clad metal cabinet in textured Ebony finish. "Sunshine" picture tube provides greater highlight brightness and greater detail. 180 Sq. In. of viewing area... make it yours!

Compact  
18"  
COLOR TV



**Babyline**  
"AT BABY TIME, IT'S BABY LINE!"  
**DROP-SIDE CRIB  
with  
Moisture-proof  
Mattress**

Innerspring mattress  
**\$27<sup>95</sup>**

- FEATURES:
- Solid End Panels
  - Silent Action Drop-Side
  - 4 Heights Spring Adjustment
  - Fully Castered
  - Non-Toxic Teething Rails

### Admiral Personal Playmate PORTABLE TV

12-Inch diagonal  
viewing area!  
**\$89.95**

Quality portable TV featuring a 79 Sq. In. of viewing area. Clear black and white picture for the best viewing. The cabinet is slim and trim... will fit anywhere!



40 MONTHS  
TO PAY!

**SAVE \$3**



**Adjustable  
METAL BED FRAME**

Strong and sturdy... adjustable to fit full or twin size beds. Plastic casters for easy rolling. Save now...at McMahan's!  
Reg. \$8.95  
**\$5<sup>89</sup>**

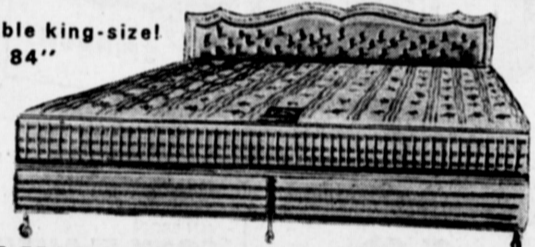
The comfortable king-size!  
A big 72" by 84"

**SAVE \$30**

**3-Pc.  
KING SIZE MATTRESS & BOX SPRING SET**  
On a king size bed you'll get 55% more sleeping area than on your present double bed!

Be honest with yourself... are you really satisfied with the mattress you're sleeping on now? Does your husband complain because his feet hang over the end or because you sleep on his half? Then you both know there's no substitute on earth for good sleep... the kind you get every night on a king size bed. See this fantastic value at McMahan's today!

Includes:  
Mattress & 2 Box Springs  
**\$99<sup>95</sup>**  
\$4.85 MONTH



### The Big, Comfortable RECLINER



A comfortable recliner is one thing every home should have. The deep foam cushions of this chair envelope you in real comfort. Expanded vinyl cover wipes clean with a damp cloth. Comes in Black, Gold, Avocado, Turquoise, and Brown.

**SAVE \$24.95**  
**\$69<sup>89</sup>**  
\$1.85 MONTH

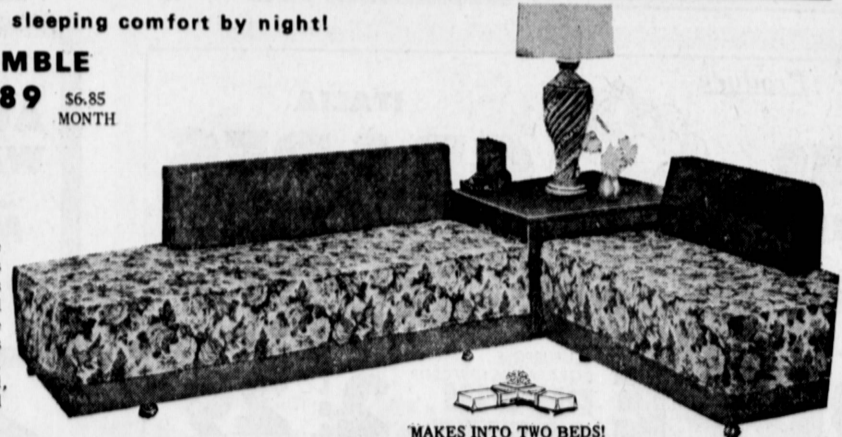


Sitting comfort by day... sleeping comfort by night!

**9 Pc. CORNER ENSEMBLE**  
Reg. \$169.95 **\$149<sup>89</sup>** \$6.85 MONTH  
**SAVE \$20**

- GROUP INCLUDES:
- 2 Slip Covers
  - 2 Mattresses
  - 2 Box Springs
- Corner Table  
2 Bolsters

This 9 piece ensemble is perfect for the studio apartment, den, or any room that has to do double-duty. This attractive set is covered in a contemporary quilted floral print with a contrasting solid color on the smart wedge bolsters. Corner table is walnut finished to blend with any decor. Comes in your choice of Sapphire Floral, with Red, Olive Floral with Olive, and Gold Floral with Gold.



**McMahan's**  
FURNITURE STORES

SINCE 1919

SE HABLA ESPANOL — FREE PARKING IN REAR — 90 DAYS LIKE CASH — OPEN FRIDAY 'TIL 9 P. M.  
**TORRANCE**  
1306 SARTORI  
328-1252

**WILMINGTON**  
909 AVALON BLVD.  
TE 44548