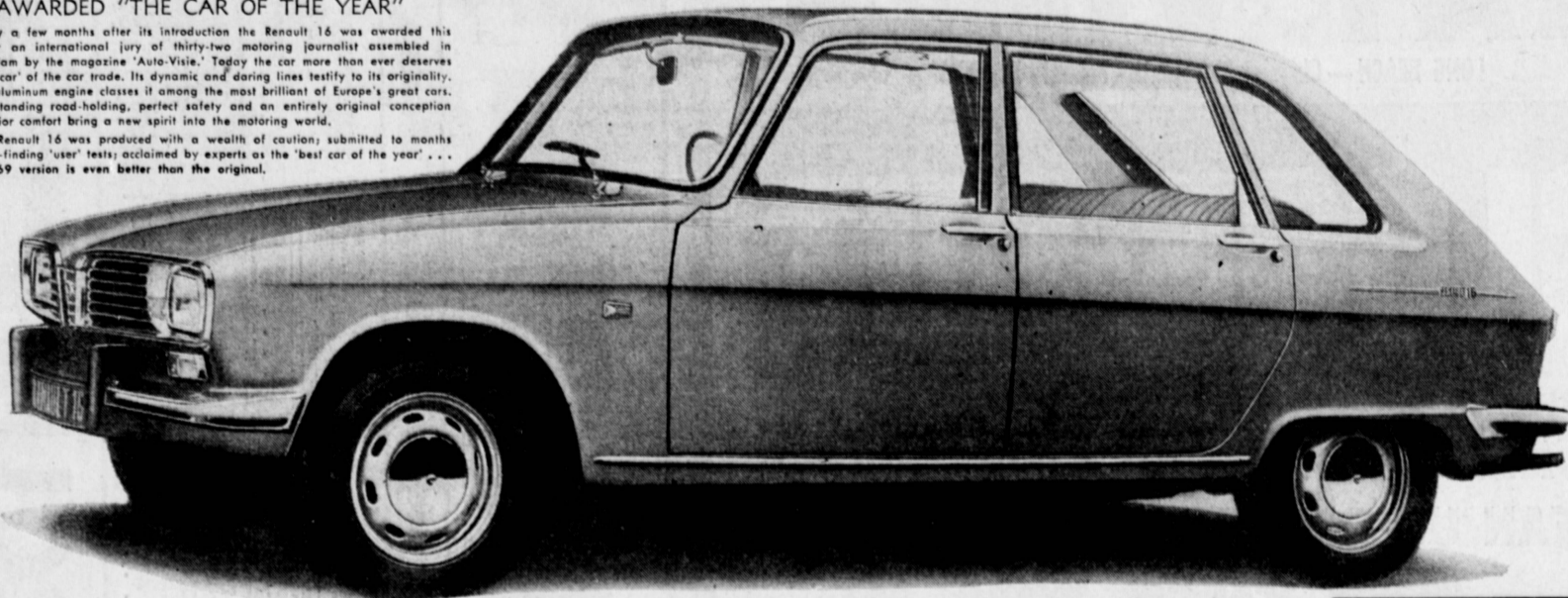


# PRESENTING THE 1969 RENAULT 16

AWARDED "THE CAR OF THE YEAR"

Only a few months after its introduction the Renault 16 was awarded this title by an international jury of thirty-two motoring journalists assembled in Amsterdam by the magazine 'Auto-Visie.' Today the car more than ever deserves this 'Oscar' of the car trade. Its dynamic and daring lines testify to its originality. Its all-aluminum engine classifies it among the most brilliant of Europe's great cars. Its outstanding road-holding, perfect safety and an entirely original conception of interior comfort bring a new spirit into the motoring world.

The Renault 16 was produced with a wealth of caution; submitted to months of truth-finding 'user' tests; acclaimed by experts as the 'best car of the year' . . . The 1969 version is even better than the original.



—YOUR KEY TO AUTOMOTIVE EXCELLENCE—  
ON DISPLAY NOW!

1969 RENAULT 16 SEDAN-WAGON presents a new design concept — a sedan with the utility of a station wagon and the comfort of a sedan. The rear seat, adjustable to seven different positions, allows for a spacious luggage and cargo area in the rear of yield optimum seating comfort. The Renault 16 features a well-performing, 70 H.P. engine, with a top speed of 93 M.P.H. and 28 M.P.G. fuel economy, front-mounted with front-wheel drive, expressing the prevalent Renault philosophy of placing the engine over the drive wheels for better traction and superior maneuverability.

Replaceable wet cylinder sleeves are among the many economy features of the Renault 16. Unitized body construction gives great strength, while five protective coatings, including an anti-corrosion paint dip insure the toughest kind of finish.

So impressed was Colin Chapman, builder of the famed Lotus race cars, with the superior engineering features of the Renault 16's all aluminum 5 main bearing engine, that he has selected it to power his latest creation, the Lotus Europa.

Let's Talk  
**RENAULT 16**  
**\$2485** + T & L  
**COMPARE**

- OUR DEAL
- OUR TRADE ALLOWANCE
- OUR SERVICE

YOU'LL BE CONVINCED TOO!

1898 **RENAULT** 1968  
**70 Years**  
Of Automotive Experience

**PENINSULA MOTORS** **RENAULT**  
25308 CRENSHAW BLVD. — 325-7401  
2 Blocks North of Pacific Coast Hiway

## "NEW" '68 CORTINA

MODEL C  
**\$1873<sup>34</sup>** FULL PRICE  
Plus Freight, Tax and License



'67 LINCOLN **\$4299**  
Continental 4-Door. Full power. Excellent condition. Black trim & Landau top. Stock #PW-671.

'68 Mustangs **\$2599**  
3 To choose from. New car warranty remaining. V-8, automatic transmission, radio & heater, power steering & all the goodies. Low as . . .

'66 T-BIRD **\$2699**  
Town Landau. 1 owner. Well cared for. Low mileage. A-1 warranty. Stock #PW-733.

'67 T-BIRD **\$3799**  
Landau 3-Door Hardtop. Full Power. White with black Landau top & trim. Sharp. Low mileage. Stock #W-744

'62 FORD X-L **\$999**  
Galaxie 2-Door Hardtop. Bucket seats. automatic transmission with console, radio, heater, power steering. Fine condition. Stock #W-742.

'64 FORD **\$1499**  
Station Wagon. Country Squire. 289 V-8, automatic, radio, heater, luggage rack. Electric tail gate. W87

## KOTT & SMOLER

**BARGAIN ROUNDUP DAYS**



SINCE 1930



USED CARS  
TE 5-6624

NEW CAR DEPARTMENT  
AND SERVICE  
TE 5-6621

336 West Anaheim, Wilmington —  
3 Miles West of the Long Beach  
Freeway . . . 11 Blocks East of  
Harbor Freeway

'68 FORD **\$2799**  
Pickup. 1/2 ton. V-8, auto-matic, heater, side moldings. Balance of new car warranty. PW-818

'64 EL CAMINO **\$1399**  
V-8, automatic, radio, heater, dtx. model. A-1 warranty. N-81

'63 VW **\$999**  
Radio. Extra clean. Runs good. W-844

'64 ECONOLINE **\$1199**  
Van. 1 owner. Sold by us new. New finish. Good rubber. A-1 warranty. W-843

'63 PLYMOUTH **\$899**  
Station Wagon. Slant six. Automatic. radio, heater. W-814

'65 T-BIRD **\$1999**  
Full power, factory air. A-1 warranty. R-822

'66 CHEVROLET **\$1799**  
Wagon. Bel Air. Factory air. V-8, automatic, radio, heater. W-822

'65 MERCURY **\$2199**  
Wagon. Colony Park. Factory air. V-8, auto., R.H.M. power steering, luggage rack, power seat. Extra nice. W-823

'61 CHEVROLET **\$899**  
1/2-Ton Pickup. Custom cab. long bed. 4 cylinder, 3-speed. W-814

'67 FORD **\$3399**  
Country Squire. 18 Pass. with facing RR seats. Factory air, full power incl. seats & windows, disc brakes. Near new cond. W-837

'66 FORD **\$1399**  
Sedan. Falcon 4-Door. Automatic. radio, heater. Real clean. Good running. PW-468

'65 CHEVROLET **\$999**  
Pickup. Short bed economy 4 cylinder engine. Stock #U1965. A-1 warranty. FULL PRICE

'65 FORD **\$1799**  
Mustang. V-8, radio, heater, 4-spd. transmission. Stock #R-383. All white with red interior. Only

'66 FORD **\$1899**  
Mustang. 4 cyl., radio, heater. Cruise, power steering. Stock #R-397. Lite blue, matching interior. FULL PRICE

'64 FORD **\$1199**  
Fairlane 4-Dr. V-8, radio, heater. AT, PS. A-1 warranty. Stock #554. A real fine car at this low price

'65 RAMBLER **\$1299**  
4 cyl. AT, R.H.M. 3-Dr. 400 Hardtop. A-1 warranty. Stock #W-584. Fully reconditioned. FULL PRICE

'64 FORD **\$1299**  
Country Sedan. V-8. 3-speed standard transmission. Stock #W-605. A-1 warranty. FULL PRICE

'65 FORD **\$1899**  
Mustang 2+2. V-8, AT, PS, Factory Air. All red. Stock #W-474. A real beauty. A-1 warranty. A-1 condition . . . ONLY

'66 FORD **\$1999**  
Mustang 2+2. Radio, heater, AT, PS. 289 V-8. Stock #W-497. A-1 warranty. FULL PRICE

'64 FORD **\$1499**  
Galaxie 300 3-Dr. Hardtop. V-8, AT, PS, radio, heater. Stock #W-714. A-1 owner, low mileage, fine car

'65 RAMBLER **\$1599**  
4-Dr. Station Wagon. R.H.M. AT, PS. fac. air, cond. Stock #W-735. This wagon is in fine condition. FULL PRICE

'67 FORD **\$2199**  
Mustang 3-Dr. Hardtop. 289 eng., radio, heater, AT, PS. Stock #W-743. A beautiful red finish. A-1 condition . . . ONLY

'67 MERCURY **\$2599**  
4-Dr. Station Wagon. Light yellow. R.H.M. AT, PS. Stock #W-748. Bal. of 50,000 mile warranty. FULL PRICE

'66 FORD **\$2899**  
Country Squire Station Wagon. R.H.M. AT, PS. Air cond. Stock #W-779. Like new condition. FULL PRICE

'61 FORD **\$499**  
Ranchero Pickup. All red. Fine transportation. Stock #W-784. A handy 3rd car for only . . .

# KOTT & SMOLAR

336 W. ANAHEIM, WILMINGTON  
3 MILES WEST OF LONG BEACH FREEWAY . . .  
11 BLOCKS EAST OF HARBOR FREEWAY.



USED CAR DEPARTMENT — TE 5-6624  
NEW CAR DEPARTMENT & SERVICE — TE 5-6621