



By ARTIE DEE
Transportation Editor

Good things never die; they just get better with age. The Los Angeles County Fair is one of those events that improves each year. From the ginger bread shack to the live stock exhibits, you can lose yourself in fun and excitement. This year, as in past years, RTD is offering fast, convenient Freeway Flyers from the RTD terminal in Los Angeles. Three kinds of package deals are sold for your convenience. Admission to the Fair and the race track, plus round trip Flyer service if \$4.25. Or for those who aren't interested in racing, how about admission to the Fair, plus round trip Flyer service for \$3.50. For the small fry (under 12) admission plus RTD Flyer service is \$1.55.

RTD also offers service from Pasadena, Monrovia, Arcadia from the west and San Bernardino, Riverside, Ontario, etc., from the east. This year let RTD fight the traffic and drop you directly in front of the gate.

Out at Universal Studios (on the 93 line) is one of the most unusual shows ever offered to the public. Called the "Mardi Gras de Mexico," it combines fun, shopping, art treasures, music, dancing, singing, plus wining and dining. All for one admission. From 6 p.m. 'til midnight, seven days a week, you can find more fun than you can shake a stick at. Easily reached from Los Angeles, Hollywood, San Fernando Valley on the 93 bus and available by transferring from dozens of other communities. Plan an evening of fun and excitement by riding the ExtraCAR to Universal Studios.

This scoop just crossed my desk and I want to pass it along while it's still hot! The RTD has on display throughout Los Angeles County, a full scale Rapid Transit car. This is a walk-in model of the rail system to be built for Los Angeles County, if the people vote for it November 5th. The next location it can be seen, is the South Bay Shopping Center, Hawthorne & Artesia, beginning Tuesday, August 27th, and continuing the 28th and 29th from 10 a.m. to 8:30 p.m. Make a point to see it and talk to the RTD representative with the car. If a picture is worth a thousand words, the real thing should be worth a million words.

Q. Could you please tell me what the bus schedule and route is leaving Hawthorne and Silverspur in Palos Verdes Peninsula? Mrs. W.C.W.

A. That would be the 125 line and the a.m. trips are as follows: 5:35, 6:00, 6:25, 6:55 and 7:30, with two trips to Los Angeles in the afternoon at 3:45 and 4:45 p.m.

Q. I visited the new Rapid Transit car display on 103rd Street. How can I help bring Rapid Transit to Los Angeles? Mr. T.C.

A. The Rapid Transit sales tax issue will be on the ballot in November and you can vote your choice then.

Q. I live near Western and Imperial and I want to go to Disneyland. What bus will I take? Mrs. M. T.

A. The trip will require 3 buses. Take the 84 bus on Western and ride to 6th Street, into the RTD terminal and catch the 58 to Disneyland.

Q. How often does the 103 line run? I will be using it very soon. Mr. L.Z.

A. The 103 line operates on an hourly schedule with no week end service.

Send your questions to Artie Dee, Transportation Editor care of this newspaper. All questions will be answered in the column, or by mail. A system map will be sent FREE to each person writing in. NO STAMPS OR STAMPED ENVELOPES ARE NECESSARY. (Advertisement)

ATTENTION MR. RETAILER!
Your sales can be greatly improved with very little expenditure. Call today for a visit with one of our experienced advertising representatives.
PRESS-HERALD PRESS-JOURNAL
DA 5-6060 TE 4-4581



Fresh, Tender Foods Co. Chicken For All Your Indoor Or Outdoor Holiday Needs

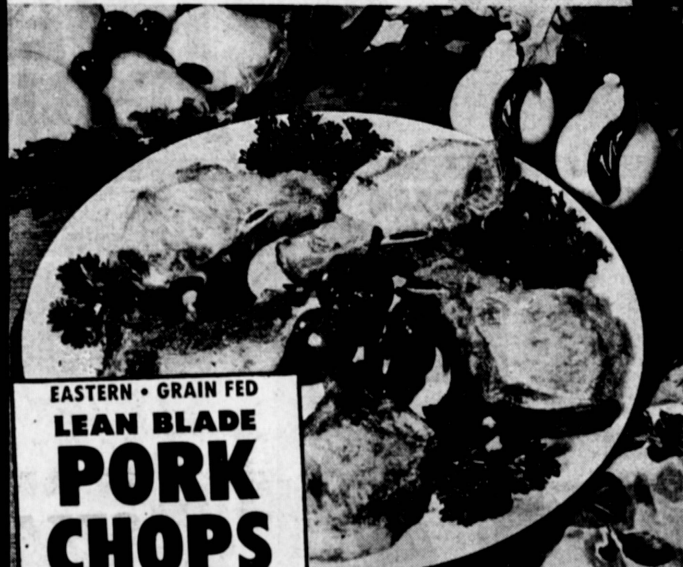


PICK O' THE CHICK
NO NECKS
OR GIBLETS
ONLY
SELECTED
PARTS **39¢** lb.



USDA INSPECTED
**SPLIT or
QUARTERED
FRYERS**
WITH GIBLETS
READY TO BROIL, FRY or BBQ
29¢ LB

FRYER PARTS SALE!
FRYER
BREASTS 59¢ lb.
LEGS & THIGHS 55¢ lb.
WINGS & GIZZARDS.. 39¢ lb.
CHICKEN LIVERS 59¢ lb.
CUT-UP FRYERS USDA INSPECTED PAN & READY **33¢** lb.



EASTERN • GRAIN FED
**LEAN BLADE
PORK
CHOPS**
49¢ LB

FRESH EASTERN
LOIN END 59¢ lb.
PORK ROAST 59¢ lb.
GRAIN FED • SELECTED CHOPS
FAMILY PAK 75¢ lb.
PORK CHOPS

**4 LEGGED
FRYERS**
EXTRA DARK MEAT **43¢** lb.
**2 BREASTED
FRYERS**
EXTRA WHITE MEAT **43¢** lb.
BEST O' THE FRYERS
ONLY LEGS, WINGS
BREASTS & THIGHS
NO NECKS
NO BACKS
NO GIBLETS **49¢** lb.

COUNTRY STYLE SPARERIBS MEATY EASTERN BAKE OR BBQ **69¢** lb.

delicatessen **Foods Co. SUPERMARKETS**

DUBUQUE ROYAL BUFFET CANNED HAM
LEAN • BONELESS
7 POUND CAN
\$5.79

USDA INSPECTED
CORNISH GAME HENS
18-20 OZ. AVG.
69¢ EA.



SPRINGFIELD • ALL MEAT WIENERS
12-oz. pkg. **39¢**
SPRINGFIELD ALL BEEF WIENERS - 12 oz. pkg. **49¢**

SPRINGFRESH SALADS
• POTATO • MACARONI • COLE SLAW
PINT CTN. **33¢**

INDIVIDUALLY WRAPPED
AMERICAN SLICES
1 LB. PKG. **69¢**

PEN & QUILL PARTY DIPS
ASSORTED FLAVORS
8 OZ. CUP **33¢**
OSCAR MAYER 1-lb. WIENERS Pkg. **69¢**

CENTER CUT RIB PORK CHOPS
FRESH PORK **89¢** lb.
FRESH LOIN PORK CHOPS
GRAIN FED **98¢** lb.
STUFFED PORK CHOPS
EASTERN GRAIN FED **98¢** lb.

FISH & SEAFOOD
RED SNAPPER
FILLETS FRESH DAILY **69¢** lb.
RUPERT'S FILLET OF SOLE IN BUTTER **69¢** lb.
RUPERT'S BREADED SHRIMP 8-OZ. PKG. **69¢**

BREADED VEAL CUTLETS
QUICK MEAL FAVORITE **69¢** LB
OSCAR MAYER SLICED BACON
ONE POUND PACKAGE **69¢**
BURN'S SLICED CANADIAN BACON
5 OZ. PKG. **59¢**