

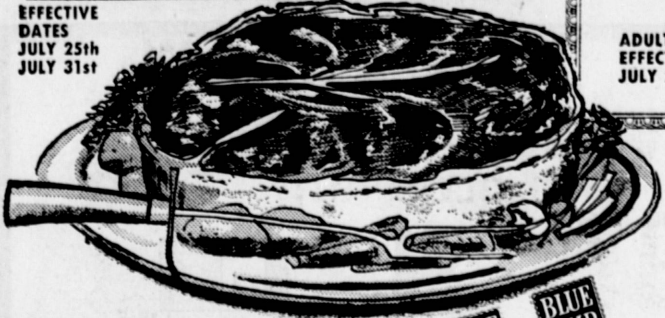


# COUPON DAYS PLUS



## BOYS LOVE GIRLS

EFFECTIVE DATES  
JULY 25th  
JULY 31st



C.H.B. PANCAKE SYRUP  
26 OZ. BOTTLE **29c**



ORANGE JUICE  
FROZEN LUCKY GOLD  
6 OZ. CAN **61c**

FROZEN LUCKY GOLD  
6 OZ. CAN

**Boys Coupon**  
WITH COUPON ONLY - LIMIT TWO  
LIBBY 2 1/2 SIZE CAN  
**PEACHES**  
ADULTS ONLY EFFECTIVE DATES  
JULY 25th-JULY 31st **23c** EA.

**Boys Coupon**  
WITH COUPON ONLY - LIMIT TWO  
ANY BRAND - 1 LB. PKG.  
**SLICED BACON**  
ADULTS ONLY EFFECTIVE DATES  
JULY 25th-JULY 31st **20c** OFF

**Boys Coupon**  
WITH COUPON ONLY - LIMIT ONE  
SIX PACK - 12 OZ. GLASS  
**7-UP (The Uncola)**  
ADULTS ONLY EFFECTIVE DATES  
JULY 25th-JULY 31st **39c** EA.

U.S.D.A. CHOICE CENTER CUT-7 BONE

**CHUCK ROAST**

BOYS SERVE ONLY U.S.D.A. CHOICE BEEF

**45c** LB.

THICK CUT BONE-IN ARM U.S.D.A. CHOICE

**SWISS STEAK**

**69c** LB.

BONELESS TENDER AND JUICY

**CHUCK ROAST**

**79c** LB.

C.H.B. PANCAKE SYRUP  
26 OZ. BOTTLE **29c**

ORANGE JUICE  
FROZEN LUCKY GOLD  
6 OZ. CAN **61c**

**PORK & BEANS**

LIBBY'S 2 1/2 SIZE CAN **19c**

FRESH GROUND CHUCK

**69c** LB.

FRESH GROUND ROUND

**79c** LB.

U.S.D.A. CHOICE BONELESS FAMILY STEAK

**89c** LB.

BONELESS ROLLED SHOULDER ROAST

**89c** LB.

U.S.D.A. CHOICE SEMI-BONELESS ENGLISH CUT ROAST

**79c** LB.

WILSON SMOKED POLISH SAUSAGE

**98c** LB.

**Boys Coupon**  
WITH COUPON ONLY - LIMIT TWO  
GLOBE AT 1 LB.  
**SPAGHETTI**  
ADULTS ONLY EFFECTIVE DATES  
JULY 25th-JULY 31st **15c** EA.

**Boys Coupon**  
WITH COUPON ONLY - LIMIT THREE  
**OL' VIRGINIA SLICED MEATS**  
BEEF-HAM-TURKEY-CORN BEEF  
3 OZ. PKG.  
ADULTS ONLY EFFECTIVE DATES  
JULY 25th-JULY 31st **25c**

**Boys Coupon**  
WITH COUPON ONLY - LIMIT TWO  
**VITA-PAKT ORANGE JUICE BLEND**  
32 OZ. QT. BOTTLE  
ADULTS ONLY EFFECTIVE DATES  
JULY 25th-JULY 31st **29c** EA.

**Boys Coupon**  
WITH COUPON ONLY - LIMIT TWO  
PLASTIC  
**FLY SWATTERS**  
ADULTS ONLY EFFECTIVE DATES  
JULY 25th-JULY 31st REG. 19c **9c** EA.

**Boys Coupon**  
WITH COUPON ONLY - LIMIT TWO  
**CRACKER JACKS**  
PKG. OF  
ADULTS ONLY EFFECTIVE DATES  
JULY 25th-JULY 31st **3 for 21c**

MEXICAN SPECIALTIES  
PINTO BEANS **10c** LB.  
SNOW WHITE RAW BEEF TRIPE **15c** LB.  
ORTEGA GREEN 2 1/2 CAN CHILES **79c** LB.

ARDEN INSTANT - PKG. of 6 ENV. **49c**  
**BREAKFAST**  
KMEX SPECIAL GALA 148 CT. **3 for \$1**  
**PRINTED TOWELS**  
SOUTHERN CROSS SLI-CRUSHED - TIDBITS **5 for \$1**  
PINEAPPLE 13 1/2 OZ. CAN  
KMEX SPECIAL AURORA 2 PACK **4 for \$1**  
**TOILET TISSUE**

**CAKE MIX**  
BETTY CROCKER ASS'TD 18 1/2 OZ. **29c** EA.

**FISH**  
FRESH WHOLE HEAD OFF **REX SOLE** **39c** LB.  
FRESH PACIFIC **WHITE BASS** FILLET **69c** LB.

**The Boys Farm Fresh Produce**  
SWEET THOMPSON SEEDLESS **GRAPES** **19c** LB.

**FRENCH FRIES**  
TABLE TESTED REGULAR OR RIPPLE CUT 9 OZ. **9c** EA.

DANUBE VODKA or GIN  
100% GRAIN NEUTRAL SPIRITS 80-PROOF **\$3.19** FULL FIFTH

GRAVENSTEIN APPLES  
FANCY NEW CROP **19c** LB.

FANCY HAAS AVOCADOS  
JUST RIGHT FOR SALADS **19c** EA.

TIDE DETERGENT  
GT. SIZE 10c OFF **65c**

PINEAPPLE JUICE  
LIBBY 46 OZ. CAN **25c** EA.

MAXWELL HOUSE COFFEE  
2 LBS. \$1.29  
1 LB. 71c  
3 LBS. \$2.07  
INSTANT, 6-OZ. \$1.00  
INSTANT, 10-OZ. \$1.49

YUBAN COFFEE  
1 LB. 77c  
INSTANT, 4-OZ. 95c  
INSTANT, 8-OZ. \$1.29

PEN & QUILL WHIPPED TOPPING  
FAMILY SIZE 1 1/2 OZ. **55c**

CANADA DRY ASSORTED  
7-OZ. **8/85c**

BAKER BOY CONFECTION ROLL  
10 1/2-OZ. **49c**

SUNSHINE KRISPY VANILLA CRACKERS WAFERS  
1-LB. 35c 12-OZ. 39c

ARLINGTON & SEPULVEDA, TORRANCE  
CARSON BLVD. AT NORMANDIE, TORRANCE  
ANAHEIM BLVD. AT AVALON, WILMINGTON  
REDONDO BEACH & VAN HESS, GARDENA  
PIER AT PROSPECT, REDONDO BEACH  
138TH & VERMONT, LOS ANGELES  
MANHATTAN BEACH & INGLEWOOD BLVD., REDONDO BEACH  
118TH & HAWTHORNE BLVD., HAWTHORNE