

GOLDEN WEST

WHOLESALE MEATS

OPEN Daily

MON. thru SAT.
9 a.m. to 6 p.m.

GUARANTEE



FOR YOUR PROTECTION THE U.S. GOVERNMENT MEAT INSPECTION SEAL IS ON EVERY PIECE OF MEAT PROCESSED AND SOLD BY THE GOLDEN WEST MEAT CO.

12211 HAWTHORNE BLVD.

HAWTHORNE

★ ★ ★

22411 HAWTHORNE AVE.

TORRANCE

SPECIAL PRICES GOOD

Thursday
Friday &
Saturday

The Home of The Low Price King

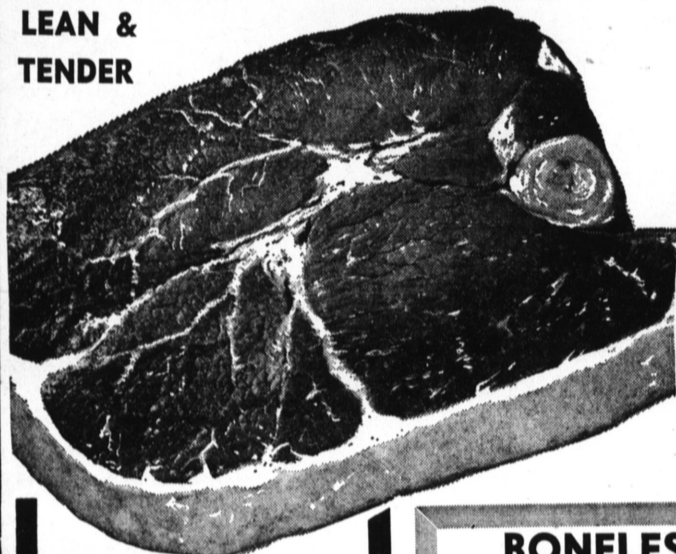
The Home of The Low Price King

WHO NEEDS DISCOUNTS ? ?
GOLDEN WEST HAS BEEN SELLING "WHOLESALE" TO THE PUBLIC FOR OVER 20 YEARS

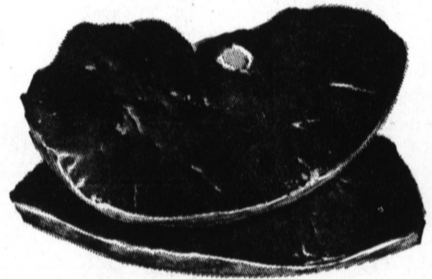
ROUND STEAK

LEAN & TENDER

CENTER CUTS



69 ¢ lb



FRESH SLICED, YOUNG STEER

BEEF LIVER

49 ¢ lb

OVEN-READY
RUMP ROAST

59 ¢ lb

BONELESS
LEAN CUBES
STEWING BEEF

69 ¢ lb

EXTRA LEAN, FRESH
GROUND ROUND

59 ¢ lb

HONEY CURED -
HICKORY SMOKED

SLICED BACON

49 ¢ lb

10 POULAR VARIETIES

SLICED

LUNCHEON MEAT 2 Lbs. 1⁰⁰

ALL BEEF, KOSHER STYLE

SALAMI By The Piece **49** ¢ lb

ALL MEAT

By The Piece

BOLOGNA **39** ¢ lb

The Home of The Low Price King • The Home of The Low Price King