



come, meet my
Personal Representative

Here's a priceless opportunity to come in for a personal consultation with a fashion expert from Petrocelli Clothes. He'll show you the brightest ideas in men's apparel.

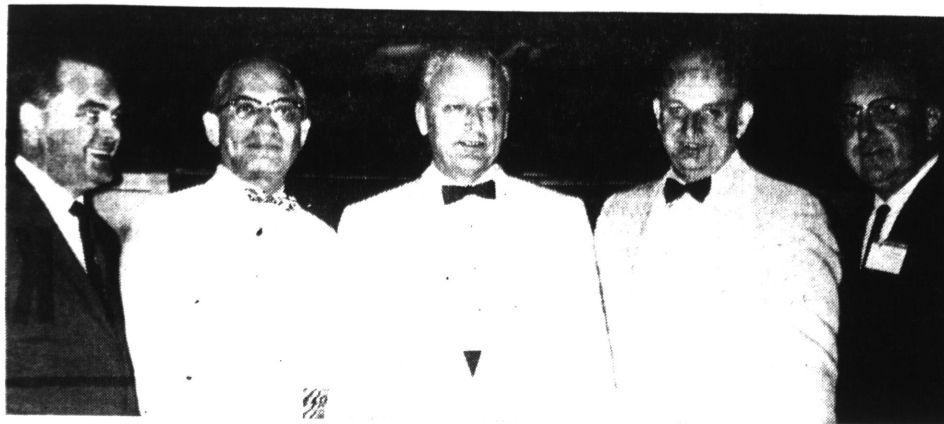
He'll demonstrate the new contoured look. Show you colors, patterns, models you'll be pleased to try-on. And he'll counsel you on how to look your best—in ready-made or Special Order clothing. Don't miss him.

Mr. Sidney De Lott,
Vice Pres., Petrocelli
Clothes, will be at



Michael Kay
FOR MEN

SOUTH BAY CENTER 1819 Hawthorne Blvd.
Friday, June 21, 1968 12:00 Noon til 9:00 p.m.
FASHION SQUARE 21446 Hawthorne Blvd.
Saturday, June 22, 1968 10:00 a.m. til 6:00 p.m.



ENGINEERS CONVE... Chatting at recent annual meeting in San Diego of the California Society of Professional Engineers are (from left), John E. Rempert, former assistant city engineer for Torrance and now with the Automobile Club of California, the immediate past president of the South Bay chapter; Harold Strauss, outgoing state president; L. M.

VanDoren, Kansas City, national president; Jack D. Todd, San Jose, incoming state president; and John K. Eardley, Torrance, state director of the engineering society. Approximately 100 delegates from 34 chapters plus national chapter officers attended the affair.

Professional Engineers Hold Annual Convention

Approximately 100 members of the California Society of Professional Engineers representing 34 chapters in the state attended the group's annual meeting in San Diego.

Attending from Torrance were John K. Eardley, consulting engineer and state director of the organization,

and John Rempert, former assistant city engineer, who is now a highway engineer with the Automobile Club of Southern California. The three-day meeting was devoted to discussions and lectures on current engineering practices and procedures.

Among those addressing the "professionalism aspect of engineering," according to Eardley, was L. M. VanDoren, a consulting engineer of Kansas City, Mo., who is currently national president of the professional engineers. In addition to emphasis on technical advancement of the profession, the California Society has accepted a role as legislative advocates on behalf of professional engineers.

Heart Attack

A 44-year-old Torrance man collapsed and died of an apparent heart attack Saturday

afternoon. Henry James Bates, 23123 Anza Ave., who had a history of heart trouble, was pronounced dead at 5 p.m. at Little Company of Mary Hospital.

ALL NEW CHILDREN'S PIANO CLASS

- Revolutionary New Electronic Piano Laboratory
 - Class Starts Soon.
 - Class Limited to 6 Students
- Also Adult, Advanced and Beginner Lessons
Call FR 0-4511 for Early Enrollment & Additional Information

ORGAN CLASS FOR ADULT BEGINNERS

A complete 7-week course of organ instruction for adult beginners on full size, 2-keyboard organs. All music materials, professional class instruction and private practice facilities are included in the small fee.

CLASSES ARE LIMITED \$8.95
ENROLL NOW,
FOR FULL COURSE

Wallichs Music City / Mannings

Hawthorne at Artesia • FR 0-4511
TORRANCE

David Surber Selected for Boys State

David J. Surber of 1109 Elm Ave., is attending Boys State in Sacramento this week as a representative of American Legion Post 381, sponsored by the Los Angeles Police Department.

A Torrance High School junior, Surber is a member of Tartors, Knights, the California Scholastic Federation, and has been active in Little League and Pony League baseball and is a two-year letterman on the Torrance High junior varsity baseball team.

Children's Films

Torrance Library, 1345 Post, will be showing three children's films on Saturday morning at 10:30. The films are "Golden Fish," "Nio," and "Three Pirates Bold." There is no admission charge.

PHONE
ORDERS
GLADLY
ACCEPTED

Sir Loin MEAT SHOPPE

SUNDAY HOURS 9-6

USDA CHOICE AND PRIME

SPENCER STEAKS

\$1.79
LB.

USDA CHOICE AND PRIME

RUMP ROAST

89
C lb

FRESH, LEAN, TENDER

CUBE STEAKS
\$1.09
LB.

BONELESS EASTERN PORK

TENDERLOINS
98
C lb

FRESH EXTRA LEAN

GROUND SIRLOIN

85
C lb

FRESH
LARGE AA

EGGS
37
C dz

BAR-B-QUE OR BROIL
LONDON BROIL

STEAKS
\$1.29
lb.

FRESH LEAN LOIN END

Pork CHOPS
BAR-M THICK SLICED
BACON

79
C lb

Happy Hours
9-6 DAILY
9-8 FRIDAY
9-6 SUNDAY

Sir Loin MEAT SHOPPE

PHONE
326-9611
325-0166

ROLLING HILLS PLAZA-2629 PACIFIC COAST HWY. AT CRENSHAW

People are different.

So are Bank of America Personal Choice Checking Accounts.

Now Bank of America gives you a choice of personal checking plans. We've introduced a new flat rate plan with a maximum charge of \$2.00 a month. The basic checking plan has been improved so you won't have to pay any service charge if your minimum balance is \$500 or more. You now have a choice of four checking plans, more than you will find at any other major bank. One's the right choice for you.

To find out exactly which one, come into your nearest Bank of America branch for a check-up.

