

South High Youth Wins PTA Grant

Steven Kofahl, a senior at South High and a 1964 graduate of Newton Elementary School, has won the third annual PTA Scholarship.

The annual award is based on scholarship, leadership, character, and extra-curricular activities.

A senior acolyte at St. Francis Episcopal Church, Kofahl is a member of the Apollos at South High and the German Club and a life member of the California Scholarship Federation. In addition, he has participated in track and football, is active in his church youth group and the Boy Scouts, and is a horse trainer and handler.

John G. Lowe, vice president, Pacific Coast, has been elected today to Sears, Roebuck and Co.'s board of directors at the company shareholders' meeting in Chicago. From his regional headquarters in Los Angeles, Lowe supervises all retail and catalog operations in ten western states—Alaska, Washington, Montana, Oregon, Utah, Idaho, Nevada, California, Arizona, and Hawaii.

Lowe began working for Sears in 1937 while attending the University of Southern California. Following his graduation and service with the U. S. Navy in the South Pacific, he assumed his first supervisory position at the Long Beach store in 1946.

AFTER holding a number of positions there, he was transferred in 1952 to the Los Angeles Retail District office.



JOHN G. LOWE
Elected to Board

es. In 1956 he was named manager of the Los Angeles-Vermont-Slauson store and later served as manager of the Inglewood and Torrance stores.

He was general manager of stores in the Los Angeles-Orange County area from 1962 until his election as territorial vice president in 1967. Located in the Pacific Coast territory are 100 retail stores, two catalog order plants and more than 180 catalog sales units.

Lowe is a director of Allstate Insurance Companies and Crocker-Citizens Bank of California. He also is a vice president and director of the Homart Development Co.

Marine Pfc. William C. Stokes of 3771 W. 188th St. is serving with the Third Marine Regiment in Vietnam.

Hammond Named to Direct Chace Campaign in Lomita

William Hammond, area civic leader, has been named chairman of the Lomita Committee to Re-elect Supervisor Burton W. Chace.

Hammond will serve with three other Lomita officials: Joe Haslam, former mayor; William Phillips; and Mead Gardiner.

"Supervisor Chace has served the people of Lomita and of Los Angeles County well," Hammond said. "I urge my fellow Lomita voters to return him to office on June 4."

Hammond cited Chace's cooperative attitude and willingness to work with Lomita officials on local problems.

"He has made certain that our local highway needs were taken care of and has been successful in bringing full county services to residents of this area," Hammond said.

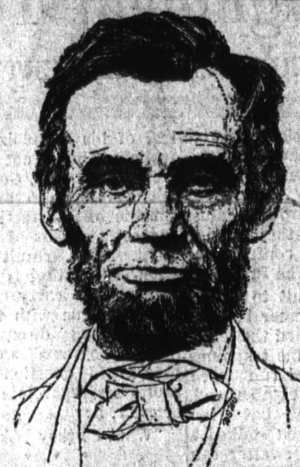
Chace also carries the support of Mayor James Cole of Lomita, who endorsed the Fourth District representative last month.

Army Pfc. Thomas C. Martin, 20, son of Mr. and Mrs. Edwin L. Martin, 20916 Dalton, was assigned to the 9th Infantry Division in Vietnam, May 3. His wife, Kay, lives in Alhambra.

Summer
DAY
CAMP

STARTS JUNE 17
kindergarten thru 8th grade
free bus service
reasonable rates
Call 679-2591

Hawthorne
Christian
Schools
13600 S. PRAIRIE AVE.
HAWTHORNE, CALIF. 90250



LINCOLN SAVINGS

It's time

to review your savings program

Much is happening this year that could affect your financial future. So it's a good time to review your savings program. How much are your savings earning for you? Are they safe and secure? Are they available when you need them? Why not check and be sure? Then, take a look at Lincoln.

Lincoln's passbook account offers savers the highest interest rate available in the nation on an insured passbook account. Your savings earn 5.13% when our current annual rate of 5% is compounded daily and maintained for a year.

If you're a long term saver, choose a Lincoln 5 1/4% bonus account. In addition to the 5% current annual interest rate, you'll earn an extra 1/4% interest per year. Paid at the end of 3 years on accounts opened in multiples of \$1,000.

What's more, on all accounts, savings earn interest from date of receipt to date of withdrawal when held for three months. Funds received by the 10th of the month earn interest from the 1st.

At Lincoln, your savings are hard working, readily available and safe. Look into Lincoln soon.

Six offices to serve you

MAIN OFFICE 630 West Sixth Street at Hope, Los Angeles • 628-0211
SHERMAN OAKS 13701 Riverside Drive at Woodman, Sherman Oaks • 783-3130
GRANADA HILLS 17851 Chatsworth Street at Zelzah, Granada Hills • 363-5041
HOLLYWOOD 7072 Hollywood Boulevard at La Brea, Hollywood • 466-6211
TORRANCE 21705 Hawthorne Boulevard at Carson, Torrance • 371-6535
SANTA ANA 1631 North Bristol at 17th, Santa Ana • 547-0771
OFFICE HOURS: Main office: Monday thru Friday 9:00 am to 4:00 pm. Branches: Monday thru Thursday 9:00 am to 4:00 pm. Friday: 9:00 am to 6:00 pm
FREE PARKING

LINCOLN SAVINGS
TORRANCE
and Loan Association

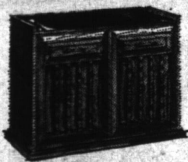
Nearly 1/2 billion dollars in assets and over 40 years of experience.
Member Federal Savings and Loan Insurance Corporation
Federal Home Loan Bank

12 hour sale!

ALL ITEMS SUBJECT
TO PRIOR SALE!

BEAL'S

9:30 A.M. TO 9:30 P.M.
FRIDAY, MAY 24th

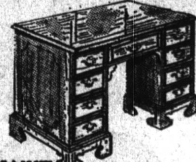


SPANISH SERVER BAR WITH
MAR-PROOF TOP

Regularly \$139.95 **\$88**

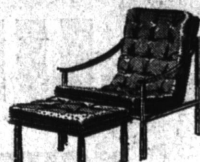
Handsomely styled... this bar measures 36" wide and is mounted on free-wheeling casters for ease of movement. A spectacular value for you at this low \$88 price!

open
sunday 1 to 5



\$99.95 WALNUT
OR MAPLE KNEE HOLE DESK
22x44 Mar-Proof Top **\$69**

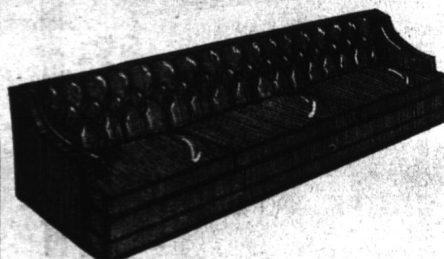
A great desk... a great buy! 7 Roomy drawers including 2 file drawers... a place for everything! Top that is resistant to heat, scratching and dents, a superior writing surface. Selected hardwood finish in salem maple or walnut.



CONTEMPORARY
CHROME AND VINYL CHAIR

Regular 169.95 **\$99**

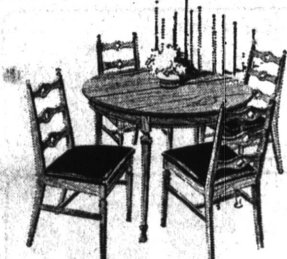
A classic of contemporary design... pure clean lines, light and airy yet superbly comfortable. Tooled chrome frame, smartly cushioned with black vinyl. Matching ottoman \$19.95



8 FOOT TUFTED BACK SOFA
2 Only

Regular \$319.95 **\$219**

Luxurious comfort, lavish beauty, shepherd casters, dacron wrapped cushions—Beautiful avocado or moss green velvet colors.



5-PIECE MEDITERRANEAN
DINING GROUP

Reg. \$199.95, 5-pc. set **\$129**

42" pecan finished table perfectly scaled for compact dining areas. 10" extension leaf. Matte finish Micaria table top with grain matched to perfection. 4 handsome pecan chairs with padded seats.



RUGGED BOOKCASE BUNKBED SET
WITH INNERSPRING MATTRESSES

Well Worth \$150.00! Complete **\$89**

Our rugged, solid hardwood bunk beds can really "take it" with heavy 3 inch posts, rigid steel rails, and secure guard rail...warm Salem finish.



REGULAR \$89.95 LUXURIOUS
VELVET OCCASIONAL CHAIRS

Save up to 35% **\$49**

Rich fruitwood cabriole legs. Charming petite chairs for very little money!



SPECIAL!
LARGE LUXURIOUS VELVET CHAIR
HAND TUFTED 8-WAY HAND-TIED

Regular \$149.95 **\$99**

Smart accent chair—roomy, decorative, luxuriously comfortable. Use singly or in pairs. Carfted in every feature of BEAL'S quality, and it's 8-way hand tied too. Tailored in rich avocado green velvet.



DUAL-PURPOSE ROOMS
WITH BEAL'S GREAT SOFA SLEEPERS!

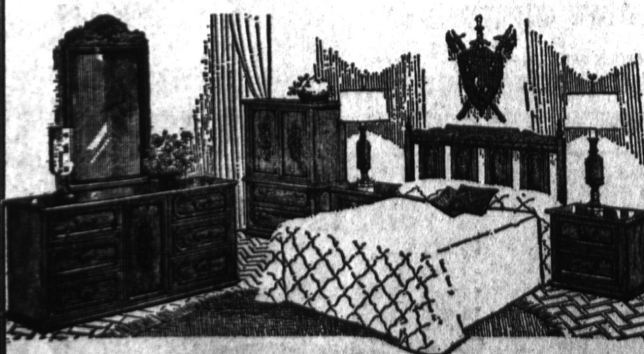
Regularly \$199.95 **\$149**

Sofa smartness with full innerspring comfort. Leather looking expanded vilau vinyl cushiony biscuit back. Converts to full size bed. Innerspring mattress for bed-like rest. A sofa by day... a full-size bed by night.

HAVE A MEDITERRANEAN BEDROOM! 9-DRAWER DRESSER, MIRROR, HEADBOARD

ONLY... **\$229**

Regularly \$299.95

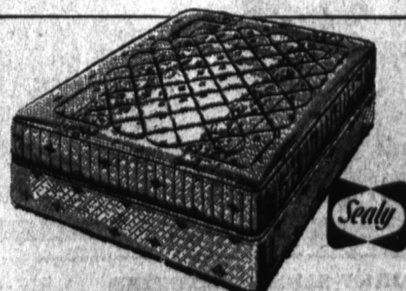


In Old World finish pecan. You get a triple dresser, almost 6 feet wide, plus big mirror, plus queen or full-size headboard * Scrolled hardware. Matching

Chest-on-Chest **\$159**

2-Drawer Commode **\$59**

King-Size Headboard **\$89**



'SPECIAL SEALY SALE'
LUXURY QUILTED FIRM SLEEP SET

Regularly \$99.95 **\$77**

Twin or Full Set \$77

Never before a luxuriously quilted Sealy mattress and box spring set with so many quality features at such a low price. Special for this event... today only...

Queen-size \$119.95 King-size \$149.95

BEAL'S hampshire house

WESTCHESTER, L.A. 45, 8900 So. Sepulveda Blvd., OR 0-1590—SP 6-2455 / Open Evenings Monday, Thursday, Friday / Interior Decorating