

### Industrial Center

Shaded areas indicate the latest section of the Watson Industrial Center being activated for occupancy by the developers, Watson Land Co. The new 200-acre section will have some \$1.5 million in interior improvements as part of its preparation for industrial use.

## Watson Land Co. To Open Newest Unit of Center

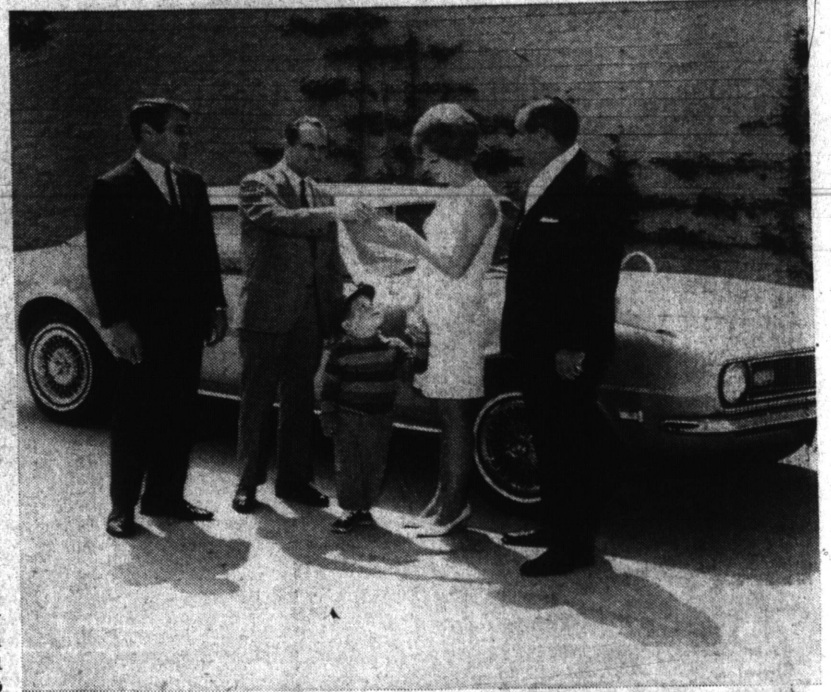
Watson Land Co., owners of more than 900 acres of industrial land in the Carson-Dominguez area of Los Angeles County, announced this week the activation of the 200-acre Phase II of its Watson Industrial Center, south of the San Diego Freeway in the new city of Carson.

H. M. Scott & Associates, Los Angeles civil engineering firm, has been selected to draw plans for a \$1.5 million program of grading, construction of interior streets, and installation of utilities in the new portion of the complex.

The first phase of 230 acres was opened in late 1965. Long term build-lease agreements have been completed or committed for more than 3/4 million square feet of manufacturing and ware house facilities since its inception.

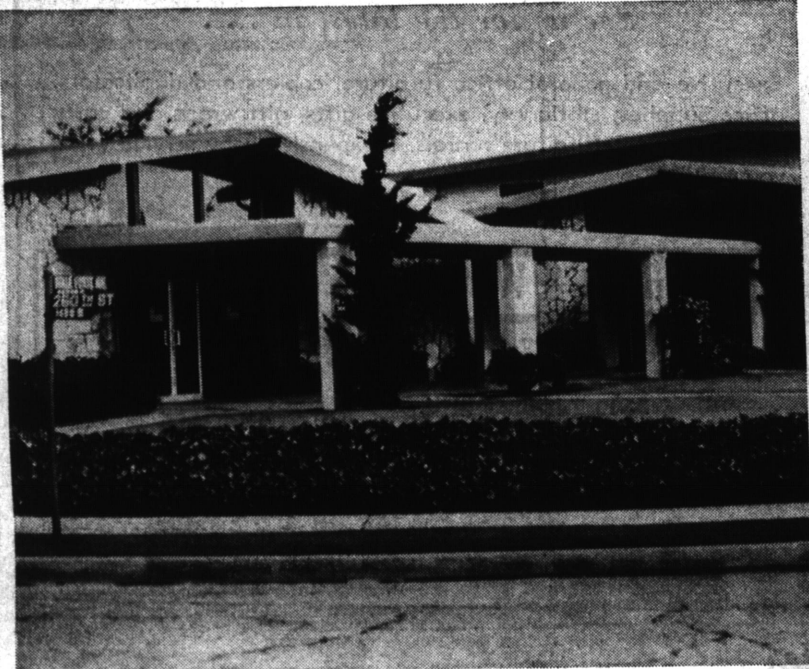
"The growing pressure for industrial land in the southwest quadrant of Los Angeles County — and especially in the Carson-Dominguez area — has made it imperative we get the second phase ready to meet the demand for controlled industrial sites offering sufficient room for expansion," explains William T. Huston, Watson president.

"By giving this project a high priority, we will have the acreage fully developed and ready for occupancy when required," Huston stated that the center will ultimately house some 100 major industrial tenants, with a projected payroll in the vicinity of \$164 million. Total cost for all phases of the development, including construction of buildings, may exceed \$150 million, he said.



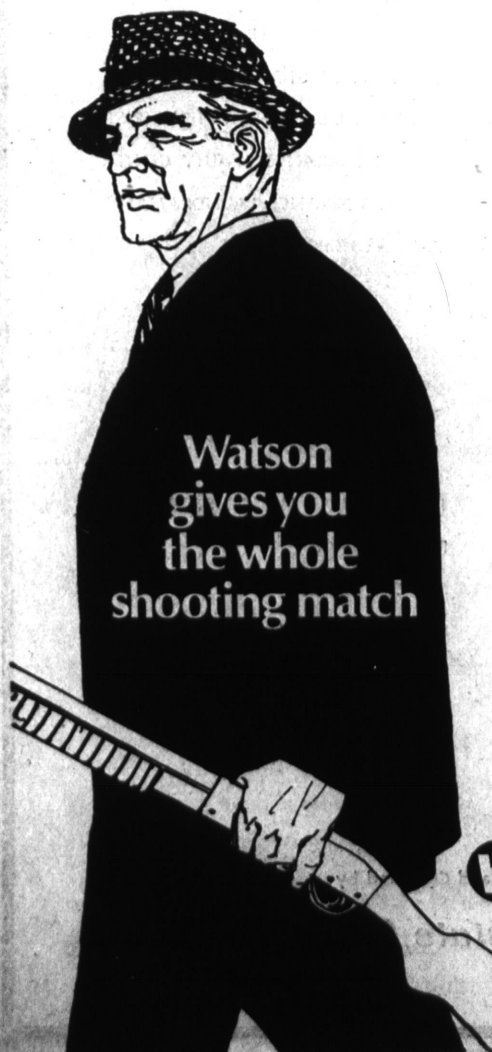
### Happy Winner

Mrs. Charles Fisch accepts the keys to a 1968 Chevrolet Camaro which she won in a Mothers' Day promotion sponsored by Bullock's Fashion Square. With Mrs. Fisch for the presentation are (from left) Donald Baker, general manager of Bullock's Fashion Square; Robert Horey, manager of Desmond's and president of the Fashion Square Merchants' Association; Mrs. Fisch's son, Teddy, 3; and Fred Lake, manager of Slavic Jewelers, where the winning ballot was submitted. A Mustang GT will be given away during a similar contest for Fathers' Day. Mrs. Fisch's husband, Charles, is serving in Vietnam.



### Union Hall

This modern building, constructed in 1957, serves as headquarters for the Retail Clerks Union Local 905. The structure contains offices and an auditorium and is used by scores of Torrance area groups for meetings and activities. The Retail Clerks Union was organized in 1934 and today has some 3,000 members serving in the Los Angeles Harbor Area and in the cities of Torrance, Gardena, and Carson.



The Watson Industrial Center has whatever you're aiming for in a Southern California site.

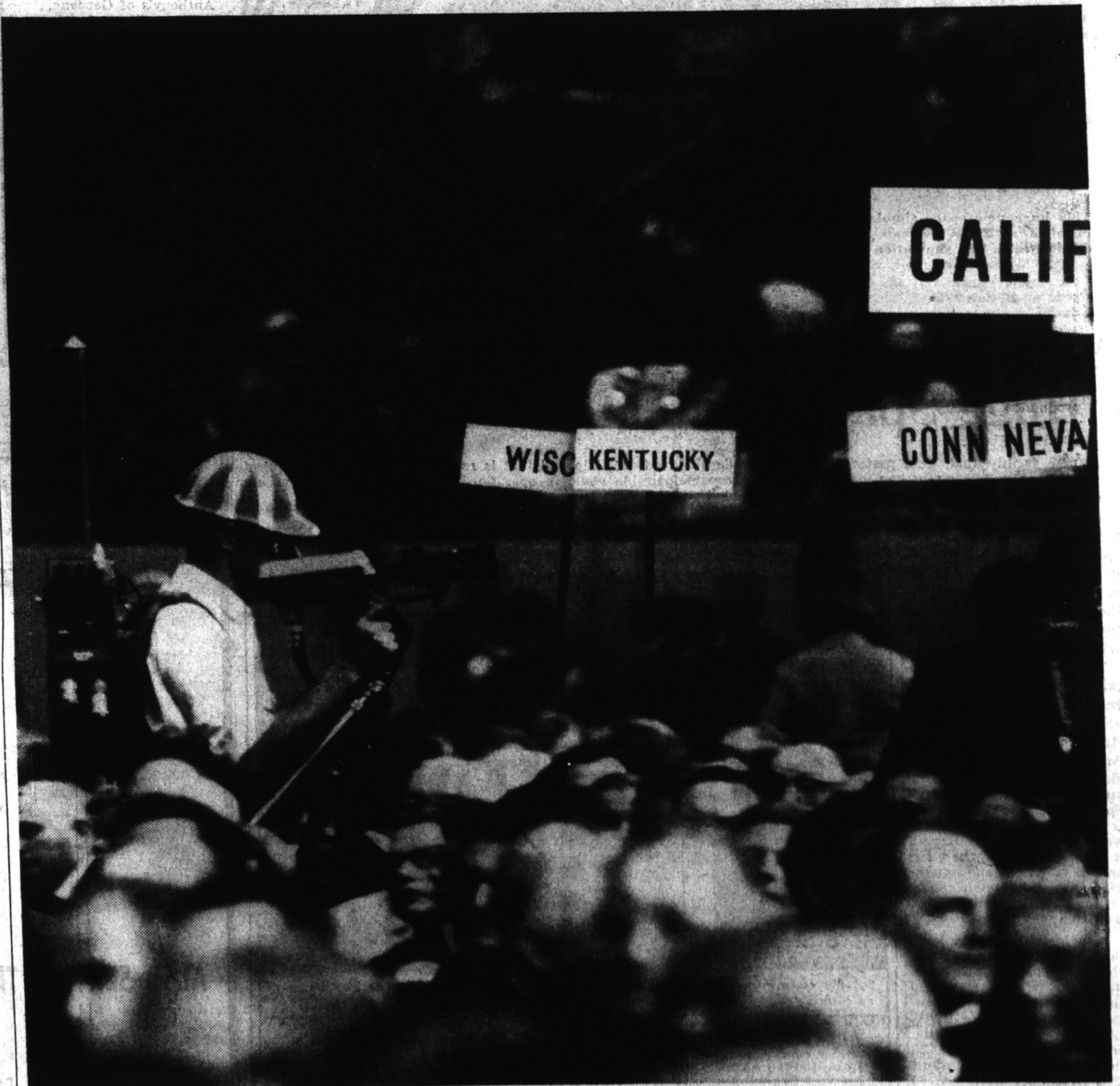
A major interstate freeway bisects our property. Los Angeles and Long Beach harbors and airports are less than 15 minutes away. Rail spurs run right to your door.

Los Angeles County's South Coast area provides plenty of labor. And Carson, California's newest city, takes care of the city property taxes. (There aren't any.)

Recreation? You'll be right next to the Watson Trap and Skeet Range, one of the largest in the country. So plan to do some real shooting when you come to look us over.

Ask for a complete package of information including a detailed freeway map.

**WATSON**  
LAND COMPANY  
Executive Offices  
3424 Wilshire Boulevard  
Los Angeles, California 90005  
Phone: (213) 385-6391



## The election is electric.

It wasn't too many years ago that candidates for public office were actually seen and heard by only a small percentage of the voters.

The electric revolution has changed all that. Television puts the candidates right in your living room. Radio lets them talk to you even as you drive to work. Electric

teleprinters and high speed presses bring you the complete text of speeches and announcements just hours after they're released.

Electronic data processing has made possible up to the minute opinion polls.

In many areas, new electric voting machines are now in use. Election returns come in faster,

and just as accurately as ever.

If you enjoy the national sport of campaign and election watching, you'll be able to follow it all on TV for just pennies. So little, in fact, you don't even think about it.

Only electricity can do so much for so little.

**SCE**

Southern California Edison