

# Nativity Church Marks 45 Years Serving Area

One of four Catholic churches serving the people of Torrance is the Nativity Parish at 1447 Engracia Avenue.

Three priests assigned to the parish are Rev. Father John P. Cremmins, Rev. Father Robert Ross, and Rev. Father Rudolfo DeLaCerna.

Boundaries for the parish are Normandie Avenue, 235th Street, Hawthorne Boulevard, and 190th Street. Approximately 2,400 families belong to the parish.

A school for first to the eighth grades has an enrollment of 627 students.

Planned for the near future will be a complete Catholic census of the area serving Nativity Church.

Sunday Masses are at 6, 7, 8, 9, 10:15, 11:15, 12:15, and 5 p.m.

Prior to establishing Nativity Parish in 1924, Mass was said in homes of parishioners by Rt. Rev. Raphael Fuhr, pastor of St. Michael's Church in Los Angeles.

Land for the first church facilities at 1420 Cota Ave. was donated by Mrs. Jared S. Torrance in 1921.

Torrance was first a Mission of St. James Parish in Redondo Beach and later St. Anthony's of Gardena.

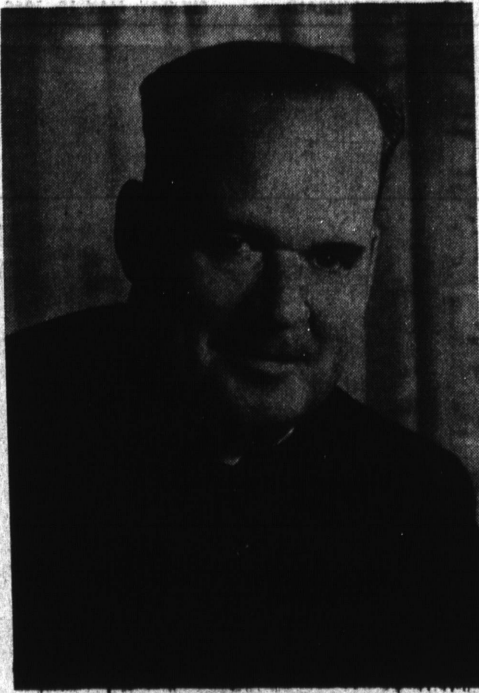
When the church was erected in Torrance, Rev. Father Edward Riordan

served as pastor for three years, during which time the rectory was built.

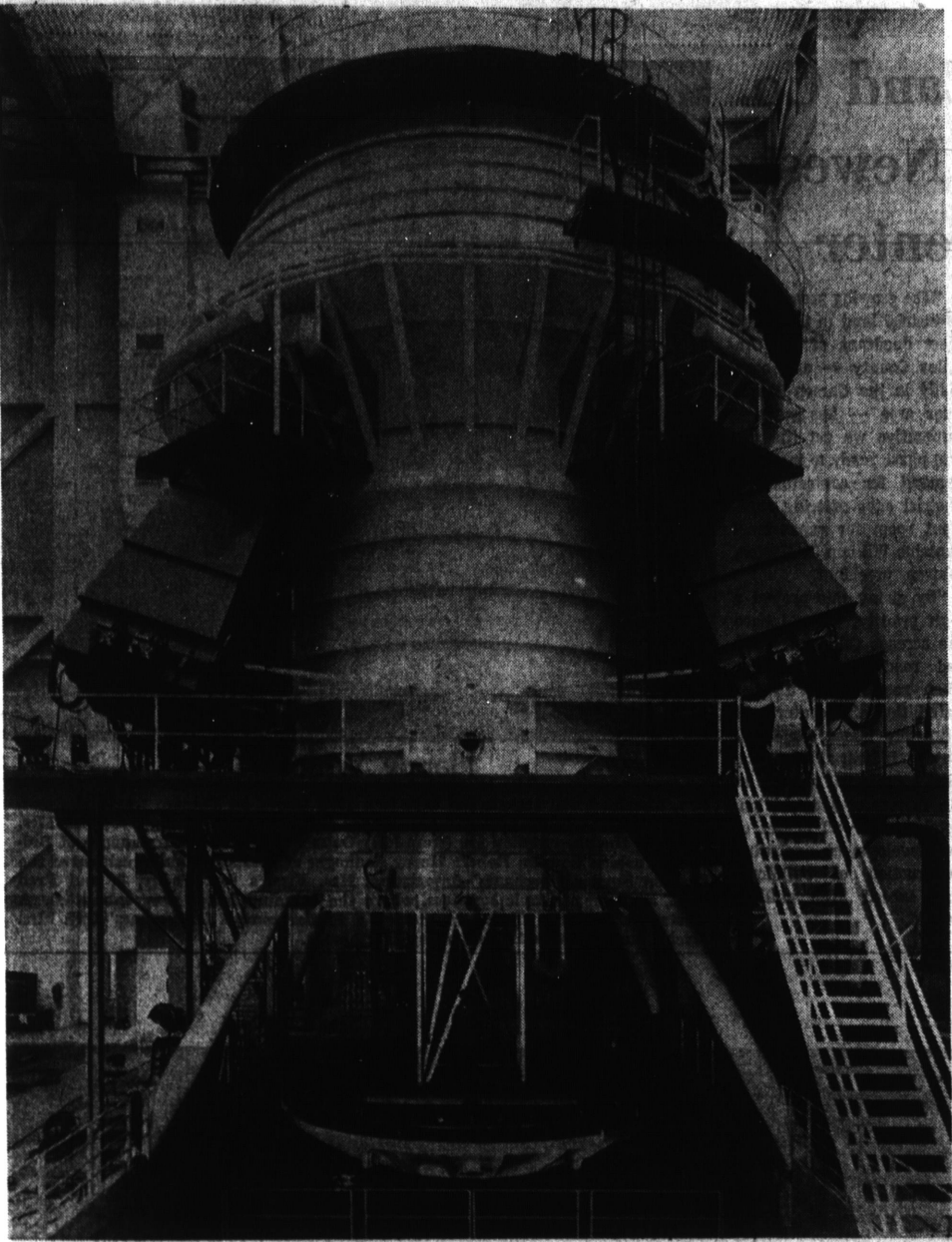
A new church was started in 1938 and dedicated by Most Reverend Archbishop John J. Cantwell in June of 1939.

Rev. Father Patrick McGuinness, who became pastor in 1944, acquired additional property for the establishment of an elementary school in 1948 at the present location on Carson Street. The school is under the administration of the Sisters of St. Joseph.

Under the supervision of Rev. Father Thomas McCarthy, additions to the church were made in 1960. The parish annex was built under the pastorate of Father Cremmins, who came to the parish in 1961.



REV. JOHN P. CREMMINS



## Simulation Chamber

This huge new space simulation chamber has been installed at TRW Systems Group facilities in Redondo Beach. The simulation chamber was conceived

and designed by TRW engineers and is the most versatile in the world.

## AT TRW FACILITIES

# Huge Space Simulator Installed

A new facility that simulates conditions as closely as possible the conditions found in outer space is in service at the Systems Group of TRW, Inc. This space simulation chamber is designed to test the ability of spacecraft to withstand the heat, cold and radiation that they will encounter in orbit.

The new chamber, conceived and designed by TRW engineers, was tested in April, only 14 months after construction go-ahead was given. According to Dr. A. K. Thiel, vice president and general manager of the company's Space Vehicles Division, "It is the finest system in the world and among the largest. It joins 15 smaller chambers and 16 vibration tables giving TRW the best environment testing facilities of any industrial company."

Also installed was a large shake table for testing the ability of spacecraft to withstand the vibration present during the lift-off and powered flight.

The overall height of the space simulation facility is 120 feet. The exterior dimensions of the chamber itself are 60 feet tall and varying between 22 and 35 feet in diameter. It is mounted above a 30-foot-deep pit.

In operation, the bottom closure of the chamber is lowered into the pit and moved on tracks from under the chamber. A satellite is lowered by a 10-ton crane into the pit and mounted to the closure. The closure is then moved back under the chamber, raised and sealed.

The chamber consists of two primary systems: a solar simulator and a thermal-vacuum chamber. They can operate independently or in unison, providing a broad range of space testing capability.

"The solar simulator portion represents approximately seven years of effort," states James Norris, Manager of TRW's Space Simulation De-

## Meet Your Neighbors at Cabrillo Savings

...the only savings and loan association headquartered in the Torrance-Palos Verdes Peninsula community.

**Interest Compounded Daily:** earn 5.13% when our 5% current annual rate is compounded daily for 1 year. Bonus Interest Plan: earn 5.25% on \$1,000 minimum certificate accounts. Interest is paid quarterly at 5% current annual rate; additional 1/4% for each of 3 years paid in lump sum at end of 3 years. Interest is based on rates declared quarterly.

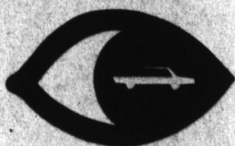
## Meet Palmer Briggs

at Cabrillo Savings. He's our Senior Vice-President and corporate Secretary, with primary responsibility as Controller. Palmer is in charge of the entire savings department, keeping an eye on everything from the opening of new accounts to making certain that the books balance to the penny before we close down at the end of the day. A soft-spoken native of Tennessee, Palmer now lives in Torrance. He attended Union University, and was in the savings and loan field and commercial banking for 11 years before joining Cabrillo when we opened in 1961. Palmer is a specialist in financial operating procedures; and has kept his skills polished in courses at the Graduate School of the Savings & Loan Institute. He applies this knowledge in helping Cabrillo Staff members to reach and maintain the highest levels of customer service.

## CABRILLO SAVINGS

AND LOAN ASSOCIATION  
2730 Pacific Coast Highway, at Crenshaw Boulevard, Torrance. Telephone: DA-5-3311, SP-5-3511  
Open daily 9 a.m. to 4 p.m.; Fridays 9 a.m. to 3 p.m.

## WATCH OUT FOR THE OTHER GUY



## Drive Defensively!

Just being in the right isn't enough. Nearly half the drivers in fatal collisions are in the right. Drive defensively—as if your life depended on it. (It does.)

## torrance number one

"City of tomorrow, Center of tomorrow"

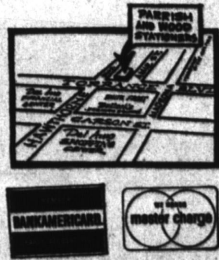
See us for the latest in . . .

Executive and general office furniture, copiers and duplicators, office supplies, stationery, executive gifts, gift wraps and party supplies, office furniture rentals. Inexpensive copy service while you wait. . . .

## PARRISH & WOOD, INC.

Stationers

OFFICE FURNITURE  
3611 Torrance Blvd.  
328-6074



## NORTH TORRANCE Shopping Center

## 190TH & ANZA

- |                              |                                 |
|------------------------------|---------------------------------|
| ALPHA BETA MARKET            | HART REALTY                     |
| ANTHONY'S SHOES              | JACOBSON JEWELER                |
| ARTHUR'S TELEPHONE SECRETARY | KARL'S SHOE STORE               |
| ASHER'S CHICKEN HOUSE        | DR. DANIEL B. MONT, OPTOMETRIST |
| AYERS HOME BAKERY            | NORTH TORRANCE BEAUTY CENTER    |
| CARE ESCROW                  | NORTH TORRANCE LAUNDRAMATIC     |
| COMMUNITY REALTY             | PAULINE'S SPORTSWEAR            |

## ALSO SERVING THE AREA

- |                          |                              |
|--------------------------|------------------------------|
| DON THE HAIRCOMBER       | PAUL THOMAS LIQUOR STORE     |
| FAMILY BARBER SHOP       | PIZZA PALACE                 |
| FOOD GIANT MARKET        | SAV-ON DRUG                  |
| "G" CLEANERS             | SECURITY FIRST NATIONAL BANK |
| GILBERT'S 5-10-25c STORE | TOWNE CLOTHIER               |
| W. T. GRANT CO.          | WINCHELL DONUT HOUSE         |
| GUIDE REALTY             | ZIG ZAG COFFEE SHOP          |

Owned and Operated by

Carson Estate Company