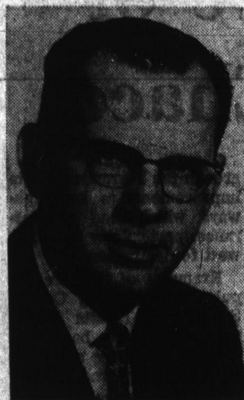


Hahn Lists Improvements in City, Adjacent Areas



Kenneth Hahn
Area Representative

Supervisor Kenneth Hahn, one of the most aggressive and popular county officials in county history, represents a major portion of the Torrance-Carson area.

Through the years, he has worked diligently in cooperation with city officials to provide the best possible facilities for his district.

The supervisor is this year seeking re-election and among his strongest boosters are Torrance Mayor Albert Isen and Carson city officials.

Following is a recap of just a few of the important improvements provided for

Torrance under Supervisor Hahn's leadership:

- As chairman of courts for the county Board of Supervisors, Hahn helped dedicate and open the new Torrance-South Bay Courthouse in 1967 to serve the entire area.

- He allocated \$42,000 to the city of Torrance to improve Crenshaw Boulevard from Del Amo Boulevard to Maricopa Street. The funds will be available in July, 1968.

- Allocated \$7,500 to assist Torrance improve the intersection of Newton and Park streets.

- \$10,000 allocated to assist the city of Torrance maintain its streets in fiscal 1967-68. The same amount was allocated in 1966-67.

- Provided \$50,000 in county funds to improve Del Amo Boulevard between Hawthorne Boulevard and Anza Avenue in May, 1965.

- Provided \$74,325 for the maintenance and improvement of 26 major streets within the city of Torrance in September, 1963.

- \$160,000 provided to Torrance to improve Redondo Beach Boulevard between Hawthorne Boulevard

and Gramercy Place in July, 1963.

- Allocated \$35,000 to assist Torrance improve 190th Street in July, 1968.

- Provided \$18,000 to Torrance to construct pedestrian overpass at 187th Street and Crenshaw Boulevard in October, 1962, for greater safety.

- Hahn provided \$7,880 to Torrance to improve Crenshaw Boulevard between 176th and 177th streets in December, 1960.

- Traffic signals were installed at Redondo Beach Boulevard and Ainsworth

Avenue in August, 1966, in a joint Torrance-county project. Included was highway safety lighting.

Major accomplishments in the Carson area under Hahn's leadership include:

- 192nd Street has been opened, providing a four-lane, fully curbed highway between Main Street and Avalon Boulevard to provide access to Victoria Park.

- Broadway is being widened to four lanes between Walnut Street and Victoria Street.

- Victoria Street was improved and widened to four

lanes with full curbing between Figueroa and Main streets and a section of Broadway and 190th Street was improved.

- Vermont Avenue was improved from Artesia Boulevard to 182nd Street. A section of Vermont near Carson Street was improved and traffic signals were installed at the Harbor Freeway off-ramp and at Carson and Normandie and Vermont intersections signals were upgraded.

- Torrance Boulevard between Normandie Avenue and the Harbor Freeway is now being widened to pro-

vide a four-lane, curbed highway.

- Carson Street was widened to six lanes between Normandie and Main Street by mid-1967.

- Main Street between Victoria and 192nd Street was improved.

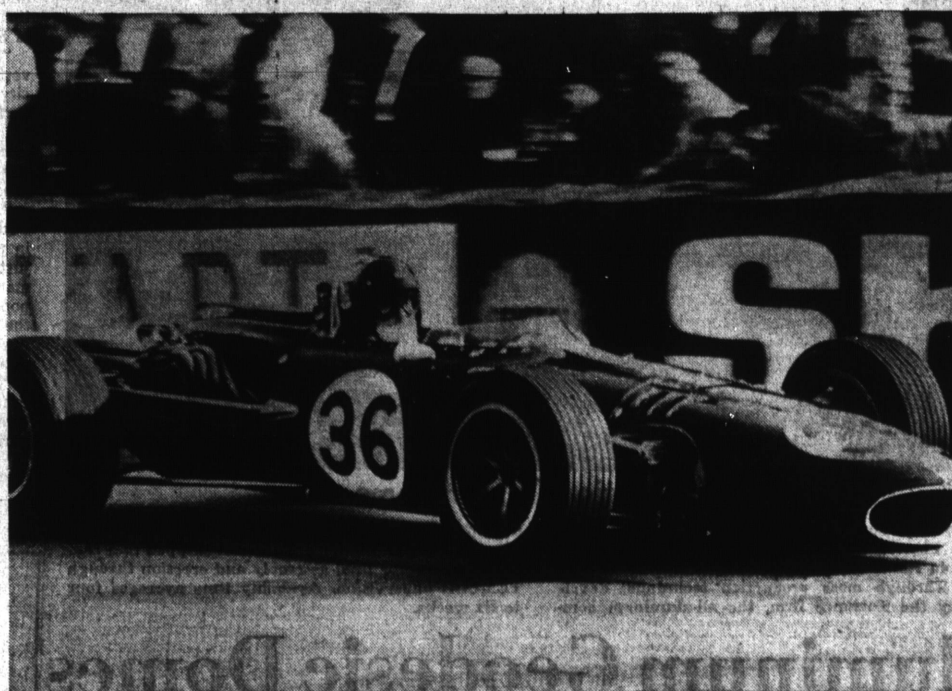
- Del Amo Boulevard was improved between Avalon Boulevard and Central Avenue and between Turmont Street and the Dominguez Channel.

- 223rd Street was widened and improved between Vermont Avenue and Avalon Boulevard.



Check Computer

Checking out Cabrillo Savings and Loan Association's new on-line data processing and records keeping system are Phyllis Cosgrove, supervisor of tellers, and Lori Calvillo, a teller at the association's Torrance office. The new system, developed by National Cash Register Co., has been installed in Cabrillo's offices to provide maximum efficiency and accuracy in keeping account records.

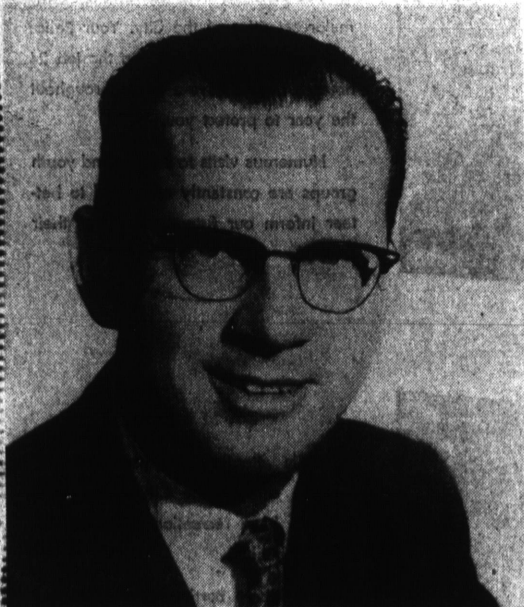


New Grand Prix Car

Engineers from the Harvey Titanium Division of Harvey Aluminum have been working with Dan Gurney's All American Racers, Inc., to produce a new kind of Formula 1 Grand Prix race car. Object of

the work is to reduce the weight of the car—it was lower by some 100 pounds—by replacing all the chrome-moly and conventional steel parts with titanium.

Congratulations to Booming Torrance!



SUPERVISOR KENNETH HAHN

Let
Kenneth Hahn
continue to
help Torrance
on its path
to greatness

HE GETS THINGS DONE

**SUPERVISOR
KENNETH
ON JUNE 4**

HAHN

Reelect

You won't find a Union Bank on every corner

WE PLANNED IT THAT WAY

The key is our "Regional Banking." Instead of a branch on every corner, we concentrate our big guns in relatively few locations.

Each is alive with a dynamic team of senior officers. You've come to headquarters.

A branch on every corner? Who needs it? Certainly not you. Not when you have a big Regional Bank of your own. Union Bank—for all your banking needs.



a most unusual bank

SOUTH BAY REGIONAL HEAD OFFICE • DEL AMO FINANCIAL CENTER • TORRANCE