

OPEN Daily

MON. thru SAT.
9 a.m. to 6 p.m.

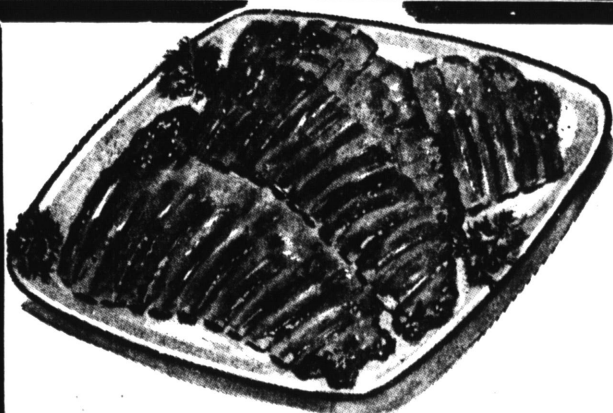
12211 HAWTHORNE BLVD. — HAWTHORNE
22411 HAWTHORNE AVE. — TORRANCE

OVER 30 MILLION LBS. OF MEAT SOLD IN 1966
BECAUSE "MEAT IS OUR ONLY BUSINESS"

SPECIAL PRICES GOOD
Thursday
Friday &
Saturday

The Home of The Low Price King • The Home of The Low Price King • The Home of The Low Price King

The Home of The Low Price King • The Home of The Low Price King • The Home of The Low Price King



SMALL BAR-B-Q SIZE, PORK
SPARE RIBS

39 ¢ lb



FRESH SLICED
YOUNG STEER
Beef Liver

49 ¢ lb



CUT-UP **Frying Chicken**
USDA Grade "A"

29 ¢ lb

LEAN, CENTER SLICES
Boiled HAM

98 ¢ lb

FRESH
Steer Beef TONGUES

39 ¢ lb

BONELESS SIRLOIN TIP
or TOP ROUND
Rolled Roast

79 ¢ lb

KOSHER STYLE SLICED
PASTRAMI

98 ¢ lb

CHEESE SALE!
SLICED
AMERICAN
OR
Muenster By The Piece
IMPORTED FROM FINLAND

YOUR CHOICE **59** ¢ lb

EXTRA LEAN, EXTRA FRESH
Ground Round

NONE FINER **59** ¢ lb

The Home of The Low Price King • The Home of The Low Price King