

LOWEST PRICES EVERY DAY!!

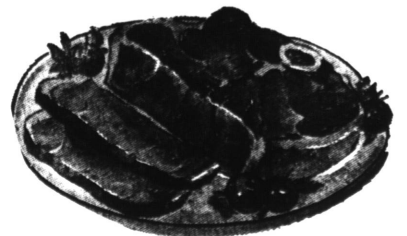


ALL MCCOY'S MARKETS
ACCEPT FEDERAL
FOOD STAMPS

MORRELL FULLY COOKED

CANNED PICNIC

6 POUNDS **3⁸⁹** EACH



**ROUND STEAK
SWISS STEAK
RUMP ROAST**
BONELESS
BEEF STEW
EXTRA LEAN
GROUND ROUND

69^c lb

FRESH FROZEN LAMB SHOULDER

ROAST **29^c** lb

SHOULDER LAMB CHOPS **49^c** lb

FRESH NO. 1 STEER BEEF
**LIVER
HEARTS
TONGUES
OXTAILS**

39^c lb | **FILET OF NORTHERN
HALIBUT
FISH**
49^c lb

S & F Instant — 10-oz. **COFFEE** **89^c**
2-oz.—4 for \$1, 6-oz.—69c

FARMER JOHN TABLE BRAND
SLICED BACON **39^c** lb.

**PINKIES
Plastic Gloves**
120 Gloves—24 to Carton
Reg. 59c Ctn. **5 Ctns. \$1⁰⁰**

**SOUTHERN GOLD PURE
FLORIDA
ORANGE JUICE**
3 Qts. **\$1⁰⁰**
1/2 Gal. — 69c

**OLD TAVERN
COFFEE**
1-lb. Can **45^c** 2-lb. Can **89^c**

**CLIQUOT CLUB
BEVERAGES**
12—26-oz. or 24—11-oz.
No Deposit Bottles **\$1³⁹**

**STAR KIST
CHUNK TUNA**
3 No. 1/2 Cans **79^c**

Golden Dip All Purpose or Corn
DRESSING
7-oz. Pkg. **5⁰⁰** Reg. 33c

**FRESH LARGE GRADE A—CHEX
EGGS**
2 Doz. in Carton **69^c**

**GOLDEN NUGGET
PEANUT BUTTER**
No. 3 Jar **89^c**
1-lb. 39c 2-lb. 79c

Jewel — 3-lb. Can **Shortening** **59^c**
Wesson — Qts. **Mayonnaise** **39^c**

**MCCOY'S
POTATO CHIPS**
5 3 1/2-oz. **\$1⁰⁰** 3 6 1/2-oz. **\$1⁰⁰**
2 14-oz. **\$1⁰⁰** 12 5c Pkgs. **49^c**

National Biscuit — 8-oz. **RITZ CRACKERS** 4/\$1
National Biscuit — 1-lb. **PREMIUM CRACKERS** 29c
National Biscuit — 1-lb. **SUGAR HONEY GRAHAMS** 33c
National Biscuit Ideal Choc. Peanut Bars, 1-lb. **OREO or PINWHEELS** 2 79c

**MAXWELL HOUSE
COFFEE**
In 3-lb. Can **63^c** 1-lb. 65c
2-lb. \$1.29
YUBAN COFFEE 1-lb. 73c—2-lb. \$1.45
INSTANT MAXWELL HOUSE 10-oz. \$1.19
INSTANT YUBAN COFFEE 9-oz. \$1.19

Ghirardelli — 6-oz. **FLICKETTES** **65^c** \$1
Pks. 29c — Qts. **COTTON MAID STARCH** **59^c**

Strawberry, Choc. Malt, Maple or Mocha **METRACAL** **45^c** \$1
Betty Crocker **SWIRL ANGEL CAKE MIX** **39^c**
C.H.B. — 2-lb. **STRAWBERRY PRESERVES** **49^c**
C.H.B. — 2-lb. **GRAPE JELLY** **39^c**

QUAIL BRAND SPECIALS
No. 303 cans **CUT STRING BEANS** **75^c** \$1
No. 303 Cans **GOLDEN WAX BEANS** **65^c** \$1
No. 303 cans **WHOLE OR SLICED BEETS** **75^c** \$1
Whole or Sliced — No. 303 cans **PICKLED BEETS** **65^c** \$1
Mustard or — No. 303 cans **TURNIP GREENS** **85^c** \$1
No. 303 cans **WHOLE IRISH POTATOES** **85^c** \$1
No. 2 1/2 cans 5/\$1 — No. 303 cans **SPINACH** **75^c** \$1
No. 303 cans **TOMATOES** **65^c** \$1
No. 303 cans **STEWED TOMATOES** **65^c** \$1
12-oz. bottle **CATSUP** **65^c** \$1
No. 300 can **TOMATO SAUCE** **65^c** \$1
Qt. **MUSTARD** **45^c** \$1
No. 1/2 can **MINCED CLAMS** **35^c** \$1

QUAIL BRAND SPECIALS
4 1/2-oz. can **COCKTAIL SHRIMP** **39^c**
11-oz. 19c — pkg. of 6/1-oz. **SEEDLESS RAISINS** **65^c** \$1
No. 303 cans **SLICED CARROTS** **85^c** \$1
Y.C. Halves & — No. 2 1/2 cans **SLICED PEACHES** **55^c** \$1
No. 2 1/2 cans 3/\$1 — No. 303 **PEARS** **55^c** \$1
1 1/2 cans **SLICED PINEAPPLE** **55^c** \$1
24-oz. bottle **PRUNE JUICE** **35^c** \$1
300 cans **CENTER CUT ASPARAGUS** **55^c** \$1
No. 2 1/2 cans 4/\$1 — No. 303 **APPLE SAUCE** **85^c** \$1
No. 2 1/2 cans 4/\$1 — No. 303 **APRICOT HALVES** **65^c** \$1
No. 2 1/2 cans 3/\$1 — No. 303 cans **Whole Unpeeled Apricots** **55^c** \$1
No. 2 1/2 cans 3/\$1 — No. 303 cans **FRUIT COCKTAIL** **55^c** \$1
Y.C. Halves & — No. 303 cans **SLICED PEACHES** **75^c** \$1

WHITMAN'S CANDY
ASSORTED BRIDGE MIX
PEANUT CLUSTERS
COVERED PEANUTS **49^c** lb

- Gebhardt's Chili Con Carne with Beans, 40-oz. 59c
- S. F. Instant Tea, 3-oz. 69c
- Medallion Asst. Pickles, 16-oz. or 22-oz. 4/\$1
- Nalley Chili Con Carne w/Beans, 40-oz. 59c
- Whitman's Air Bons 4/\$1
- Hy Grade Beef Stew, 24-oz. 49c
- Hy Grade Chili Con Carne with Beans, 24-oz. 49c
- Cubbison's All Purpose or Corn Dressing, 14-oz. 49c
- Puss Boots Chicken Flavor Cat Food, 15-oz. 6/\$1
- Puss Boots Fish & Broth Cat Food, 6-oz. 8/\$1
- Kal Kan Turkey/Chicken Parts Cat Food, 6-oz. 8/\$1

- Golden Grain Instant — Reg. 15c **MAC AND CHEESE** **85^c** \$1
- Fishers — Reg. 39c **SHORT CAKE MIX** **19^c**
- 10-lb. 59c — 20-lb. **CHARCOAL** **99^c**
- Borden's — in 3-lb. Loaf **AMERICAN SLICED CHEESE** **69^c** lb
- White King — Reg. Bar **COLD CREAM SOAP** **3²⁵** \$1
- Rug Runners or **SHELF LINERS** **35^c** \$1

**ACCENT
LEMON FLAVOR** **99^c**
1-lb. Reg. \$1.99

**BORDEN'S
CHEESE SPREAD** **69^c**
1 1/2-lb. Loaf

**ALTA BRAZIL
INSTANT COFFEE** **49^c**
6-oz.

**VOGUE BAR
SOAP** **18⁰⁰** \$1⁰⁰
Reg. Size

**McCoy's
MARKETS
LIQUOR DEPT**
SPECIAL — SAVE 10c
BUBBLE UP
6 Half Quarts **59^c** Reg. or SUGAR FREE

**MCCOY'S
VODKA OR GIN**
FULL QUARTS **\$3.59**

FREE ROLL OF KODAK FILM
With Each Roll Developed Here
Kodacolor: — Black and White
*Film Sizes 120, 126, 127, 620, 36mm (20 exp.)

**McCoy's
MARKETS
DELICATESSEN**
MORRELL YORKSHIRE WIENERS, 12-oz. pkg. 39c
Morrell's — One Pound Roll **Pure Pork Sausage** **39^c** HOT MILD

MCCOY'S SLICED LUNCHEON MEATS
ALL MEAT BOLOGNA
ALL BEEF BOLOGNA
COTTO SALAMI
PICKLE PIMENTO
HEAD CHEESE SPICED LUNCHEON DUTCH LOAF
FRIGO MOZZARELLA BALLS, 8-oz. 45c
OLIVER'S FRESH PIZZA
CHEESE PIZZA — 8-oz. — Reg. 49c 39c
PEPPERONI PIZZA — 8-oz. — Reg. 59c 49c
CHEESE PIZZA — 16-oz. — Reg. 79c 69c
PEPPERONI PIZZA — 16-oz. — Reg. 99c 99c

BUDDIG'S SLICED MEATS
SLICED BEEF
SLICED HAM
SLICED TURKEY
SLICED CHICKEN — SLICED CORNED BEEF
American — 24 Slices — 1-lb. Pkg.
SANDWICH CHEESE **69^c**

**MCCOY'S
MARKETS**

**YOU MUST BE SATISFIED
OR YOUR MONEY REFUNDED**

- **LAKWOOD**
5820 Bellflower Blvd.
- **BELLFLOWER**
17602 Bellflower Blvd.
- **PARAMOUNT**
7826 Monroe Ave.
- **LYNWOOD**
10905 So. Atlantic
- **WILMINGTON**
23408 So. Main
- **N. LONG BEACH**
5425 Long Beach Blvd.
5800 Atlantic Ave.
- **LONG BEACH**
Anheim at Cherry
5286 E. 2nd St.
2824 E. Anheim
4232 E. Anheim
2290 Santa Fe Blvd.
4100 Orange Ave
2056 Pacific Ave.
2214 Atlantic Ave.