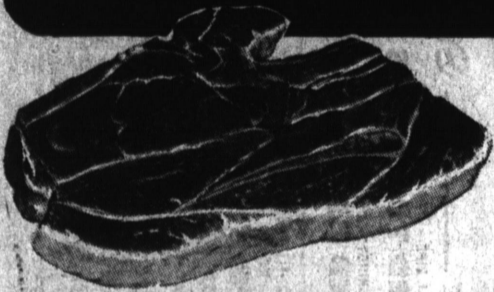




the plus

SAVE MORE MONEY WITH LOW



TENDER
CHUCK STEAK
49^c lb.



U.S.D.A. 'CHOICE' BEEF
BONELESS CHUCK STEAK 79^c
U.S.D.A. 'CHOICE' BEEF—LARGE END
STANDING RIB ROAST 89^c
LEAN, MEATY CUBES—RICH BROTH STOCK
BONELESS STEW BEEF 79^c

FOOD GIANT'S EXCLUSIVE BRAND
FRESH HEN TURKEYS
49^c lb.

PAVO
MINUTELY STRAINED OR WHOLE CRANBERRY SAUCE
1/2 lb. 27^c

U.S.D.A. GRADE 'A'—CALIFORNIA GROWN FRESH
ROASTING CHICKENS 49^c
FRESH OR FROZEN
CALIFORNIA DUCKLINGS 49^c
U.S.D.A. INSPECTED—WHOLE LEGS OR BREASTS
CHICKEN FRYER PARTS 59^c
U.S.D.A. INSPECTED—NO NECKS, BACKS OR GIBLETS
BEST O' CHICKEN FRYERS 59^c
12-OUNCE PACKAGE
McCOY BEEF BACON 65^c
ONE-POUND ROLL
McCOY BEEF SAUSAGE 45^c



GROUND BEEF
39^c lb.

fresh ground hourly
LEAN, GROUND HOURLY
FRESH GROUND CHUCK 69^c
EXTRA LEAN—GROUND HOURLY
FRESH GROUND ROUND 79^c
U.S.D.A. 'CHOICE' BEEF—WHOLE OR POINT CUT
BONELESS BEEF BRISKET 89^c

CENTER CUT—BONE IN
ROUND STEAK
79^c lb.

U.S.D.A. 'CHOICE' BEEF

U.S.D.A. 'CHOICE' BEEF—CENTER CUT
BONELESS ROUND STEAK 89^c
U.S.D.A. 'CHOICE' STEAK
BONELESS TOP SIRLOIN 91^c
U.S.D.A. 'CHOICE' BEEF
PORTERHOUSE STEAK 91^c
HORMEL RED SHIELD, CORN KING, LUER IOWA FARM
SLICED BACON 59^c 1-lb. pkg.
LEAN, MEATY BEEF
SHORT RIBS 33^c lb.

NAME BRAND FOODS PLUS HOUSEWARES

GOLDEN CREME—SLICED WHITE OR WHEAT—15-OUNCE LOAF
Ranch Style Bread 23^c

ALL POPULAR BRANDS—REGULAR, KING SIZE OR FILTER TIP—PLUS TAXES
Popular Cigarettes carton \$2¹⁵

ASSORTED CAKE MIXES—REGULAR PACKAGES—INCLUDING BUTTER CAKES
Duncan Hines Mixes 33^c

ALL PURPOSE—GIANT SIZE PACKAGE—(INCL. 10c OFF)
Ajax Detergent 59^c

MAGIC CHEF—SOLID PACK—TALL 303 CAN
California Tomatoes 6 for \$1

Frozen Foods
MORTON—20-OZ. PKG. (12-OUNCE CAN, 39c)
MACARONI & CHEESE 43^c
8-oz. pkg. 25c
WELCH'S GRAPE JUICE 89^c
6-oz. cans
VAN DE KAMP—12-OUNCE PACKAGE
DUTCH APPLE DUMPLINGS 49^c
10 1/2-OUNCE SIZE
Van de Kamp CHICKEN PIES 45^c
Reg. or Krinkle Kut—9-oz. pkg.—(French Fries, 16-oz., 29c)
FLAV-R-PAK POTATOES 6 for \$1

GIANT ROLLS—(INCL. 3c OFF)—DECORATED
ZEE PAPER TOWELS 25^c
FOOD GIANT—EASY IRONING
LIQUID STARCH 49^c half gallon
FOOD GIANT—50-BOOK PACKAGE
BOOK MATCHES 2 for 29^c
MAGIC CHEF—48-OUNCE JAR
KOSHER DILL PICKLES 69^c
GLORIETTA—NO. 2 CAN
TOMATO JUICE 2 for 39^c
2-ROLL PKG.—ASSORTED COLORS
CHIFFON TOILET TISSUE 27^c

REGULAR, HICKORY OR PIZZA FLAVOR
14-oz. bottle
HUNT'S CATSUP
2 for 29^c

MAGIC CHEF—RED—TALL 303 CAN
WHOLE OR SLICED BEETS 6 for \$1
2-POUND PACKAGE
Golden Grain PINTO BEANS 25^c
ONE-POUND PACKAGE
GLOBE A-1 SPAGHETTI 23^c
MILANI—1 1/2-OUNCE ENVELOPE
SPAGHETTI SAUCE MIX 2 for 29^c
AIR MAGIC—AEROSOL CAN—ASSORTED FRAGRANCES
ROOM DEODORIZER 29^c 7-oz. can

OCEAN BRAND—COARSE
WATER SOFTENER SALT
50-pound bag 49^c

GOLDEN CREME—ONE-POUND CARTON
Grade 'AA' BUTTER 79^c
GOLDEN GRAIN—28-OUNCE PACKAGE
LONG GRAIN RICE 29^c
FRENCH'S—4-OZ. PKG.—Au Gratin, Scalloped, New Orleans
INSTANT POTATOES 49^c
FIRESIDE—CREME—ASSORTED—10 3/4-OZ. PKG.
Sandwich Cookies 5 for \$1

LIBBY'S—JUMBO 46-OZ. CAN
PINEAPPLE JUICE 23^c SAVE 6c

LINDSAY—TALL CAN
LARGE PITTED RIPE OLIVES 3 for \$1
24-OUNCE BOTTLE—FOR PANCAKES
VERMONT MAID SYRUP 63^c
BETTY CROCKER—28-OZ. PKG.—(INCL. 4c OFF)
PANCAKE & WAFFLE FLOUR 39^c
HOUSEHOLD—12-INCH BY 25-FOOT ROLL
KAISER ALUMINUM FOIL 25^c
26-OUNCE CAN—GIVE YOUR PET A TREAT
SKIPPY DOG FOOD 6 for \$1

HUGE VARIETY PLUS GOURMET DELI

DETERGENT LIQUID ALL quart bottle 73^c LOMA LINDA RUSKET BISCUITS 12-oz. package 37^c DOW—AEROSOL CAN OVEN CLEANER 16-oz. can \$1.19 9-oz. can 75^c COFFEE HILLS BROS. 1-lb. can 69^c 2-lb. can \$1.37 Instant—10-oz. jar \$1.35 LIGHT MEAT, CHUNK STYLE STAR-KIST TUNA no. 3/4 can 49^c no. 1 can 69^c Solid Pack White Meat, no. 1/2 can, 41c STARCH STA-FLO 22-oz. bottle 59^c incl. 15c off Fabric Rinse, 1/2 gal. (incl. 10c off) 79c PLASTIC—100-FT. ROLL GLAD WRAP 27^c (incl. 4c off) DISINFECTANT LYSOL SPRAY 5-oz. can 59^c 12-oz. can 99^c