



the plus

LOW, LOW PRICES EVERY DAY



LUER OR FARMER JOHN
**FULLY COOKED
HAMS**

49^c lb.

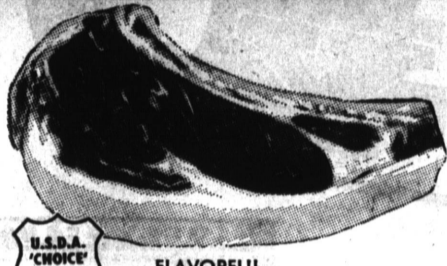
full shank
half
•
butt
pigion
65c lb.

LUER OR FARMER JOHN
CENTER CUT HAM SLICES 98¢
U.S.D.A. 'CHOICE' BEEF
JUICY CLUB STEAKS \$1.09 lb.
U.S.D.A. 'CHOICE' BEEF—LARGE END
STANDING RIB ROAST 79¢

EASTERN GRAIN-FED
**FRESH PORK
SPARERIBS**

light weight
59^c lb.

U.S.D.A. 'CHOICE' BEEF
BONELESS CHUCK STEAK 79¢
U.S.D.A. 'CHOICE' BEEF
BONELESS ROUND STEAK 89¢
LEAN, MEATY BEEF CUBES
BONELESS STEW MEAT 79¢
U.S.D.A. 'CHOICE' BEEF—WHOLE OR POINT CUT
BONELESS BRISKET 89¢
U.S.D.A. 'CHOICE' BEEF—BONE IN
BEEF RUMP ROAST 79¢
EASTERN GRAIN-FED—FRESH—BONE IN
PORK BUTT ROAST 69¢



U.S.D.A. 'CHOICE' BEEF

FLAVORFUL
**RIB
STEAK**
79^c lb.

LEAN—GROUND HOURLY
FRESH GROUND CHUCK 69¢
EXTRA LEAN—GROUND HOURLY
FRESH GROUND ROUND 79¢
SLICED—ALSO SWIFT PREMIUM OR RATH BLACKHAWK
FARMER JOHN BACON 1-pound package 69¢

MILK-FED
**VEAL
RUMP ROAST**

also Leg Roast
59^c lb.

MILK-FED—FRY UNTIL GOLDEN BROWN
VEAL RIB or LOIN CHOPS 89¢
MILK-FED—SERVE CHOPS WITH SOUR CREAM
VEAL SHOULDER CHOPS 69¢
MILK-FED—EXCELLENT FOR VEAL SCALOPINE
O-BONE VEAL CHOPS 79¢

HORMEL RED SHIELD or LUER IOWA FARMS
SLICED BACON
1-lb. pkg. **59^c**

U.S.D.A. 'CHOICE' BEEF
CHUCK STEAK
49^c lb.

GUARANTEED CHOICE MEATS PLUS EVERY DAY

FROZEN—REG. PKG.—BEEF, CHICKEN, TURKEY, CHOPPED SIRLOIN BEEF, SWISS STEAK

Swanson TV Dinners 49¢

DUTCH GIRL—A REAL FAVORITE FOR LUNCHES, SNACKS OR BREAKFAST

Spicy Apple Butter 28-ounce jar 35¢

REGULAR, KING SIZE OR FILTER TIP—PLUS TAXES

Popular Cigarettes carton \$2¹⁵

GOLDEN CREME—15-OUNCE LOAF—SLICED WHITE OR WHEAT

Ranch Style Bread 23¢

GOLDEN CREME—ONE-POUND CARTON

Grade 'AA' Butter 79¢

OLSON TRU-BLUE
LARGE 'AA' EGGS
45^c doz. SAVE 11¢
Food Giant Premium Large 'AA' Eggs, 49c doz.—Save 11¢

GOLDEN DELICIOUS—NO. 300 JAR
APPLE SAUCE 5 for \$1
BATHROOM TISSUE—WHITE, PINK, AQUA, YELLOW—2-ROLL PAK
SPA TISSUE 10 rolls \$1
MORTON HOUSE—Also Chili Con Carne w/Beans or Meat Ball Stew.
BEEF STEW 24-ounce can 49¢
ROYAL PACIFIC—CHUNK—NO. 1/2 CAN
LIGHT MEAT TUNA 29¢

NEW PROCESS SOUTHERN GOLD'S
FLORIDA—100% PURE ORANGE JUICE
glass quart
GRADE 'A' 39¢
No refrigeration required until bottle is opened
half gallon 69¢

Frozen Foods

10-OUNCE PACKAGE—ALSO CHOPPED SPINACH	BIRDSEYE LEAF SPINACH	5 for \$1
8-OUNCE PACKAGE	BIRDSEYE POTATO PUFFS	23¢
STOUFFER—12-OUNCE PACKAGE	SPINACH or CORN SOUFFLE	49¢
STOUFFER—11 1/2-OUNCE PACKAGE	POTATOES AU GRATIN	49¢
SUNNIEST—6-OUNCE CAN—(5 12-OZ. CANS, \$1)	ORANGE CONCENTRATE	2 for 25¢

MAXWELL HOUSE—1 0-OUNCE JAR	INSTANT COFFEE	\$1.33
LARGE NO. 2 1/2 CAN	ARCHWAY FRUIT MIX	4 for \$1
WISHBONE—8-OUNCE BOTTLE	ITALIAN DRESSING	39¢
AIR MAGIC—ASSORTED SCENTS	ROOM AIR FRESHENER 7-ounce can	29¢
BOBRICK'S—QUART BOTTLE	PINE SCENTED AMMONIA	19¢
FOOD GIANT—22-OZ. BOTTLE—ALSO REGULAR	PINK LOTION DETERGENT	39¢

4-OUNCE CAN—A TREAT ANYTIME
LIBBY'S VIENNA SAUSAGE 4 for \$1
16-OUNCE CAN—DELICIOUS HOT OR COLD
Campbell's PORK & BEANS 2 for 29¢
BROKEN—5-OUNCE CAN
SEA PRINCE SALAD SHRIMP 45¢
12-OUNCE CAN—CALIFORNIA GROWN
HUNT'S TOMATO PASTE 29¢
PETER PAN—18-OUNCE JAR—ALSO CRUNCHY
SMOOTH PEANUT BUTTER 55¢

SEE Mr. T. E. Cummings president of Food Giant Markets ON "OFFICE OF THE PRESIDENT" Thursday, Jan. 12 3 p.m. & 9:15 p.m. channel 22

STRAINED—ASSORTED VARIETIES
BEECH-NUT BABY FOOD
12 \$1 4-oz. jars

DOG FOOD—10-POUND PACKAGE
FRISKIES CUBES or MEAL \$1.33
PERFECTION—ECONOMY PAK
LONG GRAIN RICE 2 lb. 29¢
QUART JAR—ENHANCES SANDWICHES OR SALADS
Best Foods MAYONNAISE 59¢
ASSORTED MIXES—19-OUNCE PACKAGE
MAGIC CHEF CAKE MIXES 29¢
FROZEN—12-OZ.—ALSO CHOCOLATE CAKE—14-OZ.
SARA LEE POUND CAKE 85¢

NATIONALLY ADVERTISED BRANDS PLUS EVERY DAY

COFFEE FOLGER'S 1-lb. 69¢ 2-lb. can, \$1.37 3-lb. can, \$2.05	HI SPOT CANADA DRY 6 12-oz. bottles 49¢ plus deposit	ALL PURPOSE FAB DETERGENT giant box 69¢ incl. 10c off	DETERGENT VEL LIQUID 22-oz. bottle 46¢ incl. 13c off	SOAKY CHARACTERS BUBBLE BATH 10-oz. size 69¢	DETERGENT COLD POWER giant box 69¢ incl. 10c off	OCEAN SPRAY JUICE CRANBERRY COCKTAIL quart bottle 59¢	NABISCO—MIX & EAT CREAM OF WHEAT ten 1-oz. envelopes 45¢
--	---	--	---	---	---	--	---