

Young Composers To Share Awards

Young composers will have a chance to gain recognition for their work this spring through the Young Musicians Foundation of Los Angeles.

Rose Parade Direct Buses Scheduled

Special Rapid Transit District buses will travel direct to the Rose Parade in Pasadena Monday morning from the Torrance-Redondo Beach areas. The service will take passengers to Marengo and Green streets in Pasadena.

Buses will leave from Catalina Avenue and Avenue I in Redondo Beach at 5:45 a.m. and 5:50 a.m.

Other buses will depart from Catalina Avenue and Torrance Boulevard, Redondo Beach, at 5:45 a.m. and 5:50 a.m.; from Hawthorne and Torrance boulevards, 5:54 a.m. and 5:59 a.m.; and from Hawthorne and Artesia boulevards, 6:07 a.m. and 6:12 a.m.

Information may be obtained by telephoning the Rapid Transit District.

Wells Fargo Bank Seeks Branch Here

SACRAMENTO—The state banking department has announced it has received an application from Wells Fargo Bank to establish a branch in Torrance, in the vicinity of Hawthorne Boulevard and Carson Street.

sponsor of the Debut Orchestra and Debut Auditions and a resident company at The Music Center.

Jan. 15 is the deadline for composers, age 25 and younger, to submit works for consideration. A Debut Grant of \$1,000 will be awarded the winner by the foundation.

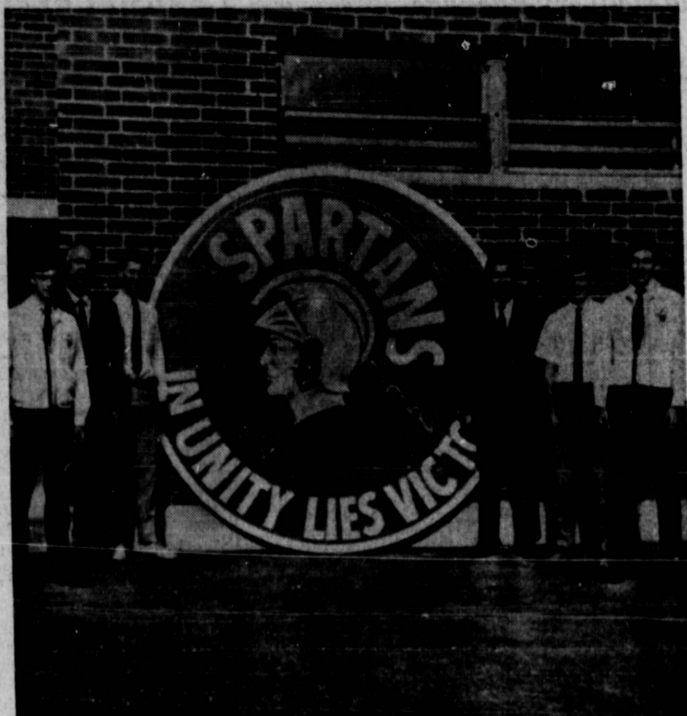
Southern California's colony of resident composers will be well represented on the panel of judges, presided over by Ingolf Dahl, professor of music at the University of Southern California and music director of the YMF Debut Orchestra.

The judges will be Roy Harris, Karl Köhn, Ernst Krenek, Henri Lazarof, Leonard Roseman, and Halsey Stevens. Also serving on the panel will be YMF president Elmer Bernstein.

The composition selected to win the \$1,000 Debut Grant will be premiered by the YMF Debut Orchestra at the concert scheduled for April 5 in Royce Hall on the University of California at Los Angeles campus.

All entries must be written for standard or chamber orchestra of no more than 45 players and must not be of excessive difficulty or length. Compositions previously performed at a concert sponsored by the YMF are not eligible for the competition.

Applications and information may be obtained from the Young Musicians Foundation, 490 S. San Vicente Blvd., Suite 6, Los Angeles, Calif. 90048.



SPARTAN CREST . . . This handsome emblem and the words "South High" in eight-foot letters were recently installed high on the south wall of the school's gymnasium. Visible from Pacific Coast Highway, the emblem and letters were installed through the money-raising activities of Boys' League of South High School. Shown here with the emblem are, from left, John Gazdik, Boys' League vice-president; Dr. John A. Lucas, South High principal; Randy Kimose, Boys' League president; James Krembas, Boys' League sponsor; Dan Carlson, Boys' League secretary; and David Brenner, Boys' League treasurer.

Grant of \$395 Given Area Group

The Spanish American Institute in Gardena has been awarded a grant of \$395 by the California Community Foundation, Gabriel C. Deque, chairman of the foundation's advisory committee, has announced.

The Gardena institute is among 299 charitable institutions sharing this year's total foundation donation of more than \$977,000.

Security First National Bank, trustee for the foundation in Gardena has reported this year's grants bring total distributions to more than \$8.8 million since the foundation was formed in 1915 by the late Joseph F. Sartori. Sartori, who headed Security Bank for many years, created the foundation as a perpetual trust. It has grown to become the largest of its kind in the West and the fifth largest on the North American Continent.

Pharmacists to Participate In Medi-Cal Drug Control

Local pharmacists have joined with the California Pharmaceutical Association to assist the state of California to exert controls over the drug portion of the state Medi-Cal program, according to an announcement by the pharmaceutical society.

The South Bay Pharmaceutical Association is one of the 38 local pharmacy groups that have joined with the California Pharmaceutical Association to appoint "Pharmacy Utilization Review Committees," at the request of the Office of Health Care Services, Health and Welfare Agency, according to Kenneth Katz, president of the state pharmaceutical society.

"The purpose of these committees is to recommend on such matters as quality or quantity of services provided to beneficiaries, and the problems that cannot be resolved satisfactorily by informal investigation of the fiscal intermediary," Katz reported.

THE SOUTH BAY area pharmacy utilization review committee consists of five members. The Medi-Cal fiscal intermediary, California Physicians' Service, will refer problems concerning overdispensing and overutilization to the local review committee, as they develop within the South Bay area.

Under the provisions of California Medical Assistance Program Regulation 51015, "Grievances and Complaints," the recommendations based on the findings of the Local or State Pharmacy Utilization Review Committee shall be considered by the fiscal intermediary as guidance and advisory in nature.

Katz said that the problems that will be referred to the committee may include, but are not limited to the following: "Knowingly dispensing medication with excessive frequency, (2) Continuous dispensing of drugs prescribed in excessive or small quantities without professional liaison, and (3) Failure to use professional judgment consistent with acceptable pharmaceutical practice standards."

PROVISIONS for appeal on the findings and recommendations of the local utilization review committee allow for a review by the Utilization Review Committee of the California Pharmaceutical Association.

Under the provisions of California Medical Assistance Program Regulation 51015, "Grievances and Complaints," the recommendations based on the findings of the Local or State Pharmacy Utilization Review Committee shall be considered by the fiscal intermediary as guidance and advisory in nature.

PHARMACEUTICAL practices involving legal violations are not to be referred by the fiscal intermediary to the Utilization Review Committee, according to the state pharmacy spokesman.



DRIVE-IN ROADIUM THEATRE

Redondo Beach Blvd. at Crenshaw, Gardena DA 4-2664

SPECIAL — ONE WEEK ENGAGEMENT ONLY —

"DIRTY DOZEN"

— In Color —
LEE MARVIN — ERNEST BORGNINE

WITH SELECTED SHORT SUBJECTS
PLAYS THRU JAN. 2

— TWO SHOWINGS NIGHTLY — 4:30 P.M. & 9:30 P.M.

Featuring Motorola

RENT A COLOR TV \$9.00 A MONTH UP

Call 372-1384

Newberrys ROLLING HILLS PLAZA

FINAL CLEARANCE

THOUSANDS OF YARDS OF FINE FABRICS GO ON SALE SUNDAY...
SALE WILL END WEDNESDAY AT 9 P.M. HERE ARE A FEW EXAMPLES...

YOUR CHOICE

OF ANY OF THE FABRICS LISTED BELOW AT THIS ONE LOW, LOW CLEARANCE PRICE...

2 YARDS FOR \$1

TERRIFIC VALUES UP TO \$2.98 YD.

SOLID COLOR VELVETEEN
100% cotton. 36 inches wide, assorted lengths up to 10 yards. Selection of colors will not last long. So—hurry! Regular 1.98 yd. **2 yds. \$1**

COLORFUL BROCADES
Assorted colors in rayon acetate. 44-45 inches wide. Lengths to 10 yards. Very luxurious fabric! Regular 1.98-2.98 yd. **2 yds. \$1**

LUXURIOUS IMITATION FUR
54 to 60 inches wide, assorted lengths in textured and solid colors. Very useful. Regular 1.98-2.98 yd. **2 yds. \$1**

MIX AND MATCH ASSORTMENT
Choose from: butcher weave linens, quilts, and silk type prints. Acetates, rayons, cottons and assorted blends. Regular 77c yd. **2 yds. \$1**

HURRY WHILE STOCKS LAST!

Newberrys ROLLING HILLS PLAZA

OPEN EVES. 'TIL 9 — CLOSED NEW YEAR'S DAY

PACIFIC COAST HWY. AT CRENSHAW, TORRANCE

Newberrys IF IT'S QUALITY YOU'RE LOOKING FOR

3 BIG DAYS . . . SUN., TUES., & Wed. WEDNESDAY

at Rolling Hills Plaza only!

Super White Sale Buys

Save 32c.. Reg. 2.59

LUXURIOUS "DAN RIVER" WHITE PERCALE SHEETS

sale 2.27 twin flat or twin fitted

180 count durable cotton percales. Fitted sheets with elastic corners.

Full size, flat or fitted, Reg. 2.89 . . . 2.47

Pillowcases, 42x36", Reg. 2 for 1.29 . . . 2 for 1.09

Save 42c.. Reg. 2.19

LONG WEARING "DAN RIVER" WHITE MUSLIN SHEETS

sale 1.77 twin flat or twin fitted

Sturdy bleached white cotton muslins. Fitted sheets with elastic corners.

Full size, flat or fitted, Reg. 2.49 . . . 1.97

Pillowcases, 42x36", Reg. 2 for \$1 . . . 2 for 83c

Save \$1

WAVY CHENILLE NO-IRON SPREAD

Lush cotton-rayon chenille with lint-free "locked-in" rayon viscose tufting. Bullion fringe. White, colors. Machine washable. Twin, 76x-105"; full, 90x105".

sale 4.99

After sale will be 5.99

BILTMORE'S "SUSAN" BLANKETS

94% rayon fiber woven blankets with 100% nylon binding. 72" x 90" size. Twin or double bed. Bright colors. Buy several!

REGULARLY 4.49

\$3.33

Sale!

CONVERTA-PILLOW COVERS

REGULARLY 1.27

88c

Zippered quality acetates in bright solids, pretty floral prints. All washable.

BATH TOWELS

Thick and absorbent cotton terry towels in assorted colors and prints. Slightly irregulars. Now is the time to brighten up the bathroom with new towels!

VALUES TO 1.98

77c ea.

It's easy to say "CHARGE IT PLEASE"

Newberrys AT THIS LOCATION ONLY

ROLLING HILLS PLAZA

PACIFIC COAST HWY. AT CRENSHAW BLVD., TORRANCE — SALE DAYS: SUN.-TUES.-WED.