

CHEERS

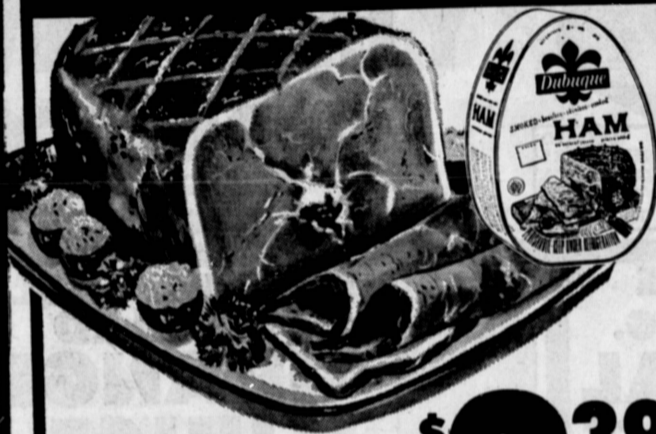
Foods Co. SUPERMARKETS

Presenting A Complete Selection Of Happy New Year Foods...

USDA CHOICE STEER BEEF and EASTERN GRAIN FED PORK

For Hearty Beef Eaters

Complete Holiday Selection From Our Delicatessen Dept.



DUBUQUE ROYAL BUFFET HAMS

4 POUND CAN \$3.39
7 Lb. \$5.79

LEAN • NO WASTE



SPRINGFIELD WIENERS ALL MEAT
12 OZ. PKG. OF 10 **39¢**

PARTY DIPS
PEN & QUILL 8 OZ. CUP **33¢**

AMERICAN CHEESE
BORDEN'S Sliced 3 lb. pkg. **\$2.09**

SPRINGFRESH CREAM CHEESE
8 OZ. PKG. **29¢**

GINGHAM • SLICED LUNCH MEATS
• BOLOGNA • SALAMI
• SANDWICH • SPICED
• PICKLE-PIMIENTO
5 OZ. PKG. **19¢**

SPRINGFRESH SALADS
• POTATO • COLE SLAW
• MACARONI PINT CUP **29¢**

USDA CHOICE BEEF LEAN CENTER CUT **CHUCK STEAKS** **47¢ lb.**

USDA CHOICE BEEF **BONELESS STEW MEAT** **79¢ lb.**

USDA CHOICE BEEF LEAN, TASTY **FAMILY STEAKS** **89¢ lb.**

USDA CHOICE BEEF TASTY, LEAN **CALIFORNIA STEAKS** **89¢ lb.**

USDA CHOICE BEEF **BONELESS SHOULDER CLOD ROLLED ROAST** **89¢ lb.**



USDA CHOICE • BLADE CUT **CHUCK ROAST** **35¢ lb.**

Certified **USDA CHOICE** Steer Beef

USDA CHOICE BEEF **BONELESS BRISKET or CHUCK ROAST** **79¢ lb.**

LEAN TENDER **29¢**
TRY ADOLPH'S MEAT MARINADE FOR ADDED FLAVOR & TENDERNESS.
1/2 OZ. PKG.

USDA CHOICE BEEF **O-BONE STYLE SWISS STEAK** **59¢ lb.**



USDA CHOICE BEEF **SWISS STEAK**

Certified **USDA CHOICE** Steer Beef

FRESH NUTRITIOUS BEEF LIVER



FRESH EASTERN GRAIN FED **FIRST—BLADE CUT PORK CHOPS** **49¢ lb.**

BY THE PIECE DELICIOUS **PASTRAMI** **89¢ lb.**

CURE #1 BUFFET STYLE **HAMS** **\$1.49 lb.**

MCCOY'S IRISH **CORN BEEF** **79¢ lb.**

MCCOY'S CORN **BEEF ROUND** **89¢ lb.**

FRESH • EASTERN PORK CHOPS

fresh produce **Foods Co. SUPERMARKETS**



TANGERINES
FANCY, SWEET LARGE DANCY **19¢ lb.**

EXTRA FANCY WASHINGTON STATE DELICIOUS **APPLES** **5 LBS. \$1**

LARGE, RIPE **FUERTE AVOCADOS** BUTTERY FLAVOR **25¢ ea.**

GOLDEN RIPE **CHIQUITA BANANAS** **10¢ lb.**

GOURMET DELIGHT **MUSH-ROOMS** HALF POUND **39¢**

LOIN END **PORK ROAST** 3 POUND AVG. **59¢ lb.**

COUNTRY STYLE **SPARE RIBS** LEAN MEATY **59¢ lb.**

CENTER CUT RIB or **LOIN END CHOPS** FRESH EASTERN PORK **79¢ lb.**

LOIN CUT **PORK CHOPS** EASTERN GRAIN FED PORK **89¢ lb.**

WAFER THIN or **STUFFING CHOPS** EASTERN GRAIN-FED Your Choice **98¢ lb.**

PORK CHOP SUEY MEAT SMALL CUBES OF LEAN PORK **89¢ lb.**

FRESH • NUTRITIOUS **BEEF LIVER** **49¢ lb.**



SEAFOOD
4 OZ. SIZE **SHRIMP COCKTAIL** **29¢**
FROM NORTHERN SEAS **HALIBUT STEAKS** **79¢ lb.**

HORMEL or LUER **SHANK HALF HAMS** **49¢ lb.**
HORMEL or LUER **BUTT END HAM** **59¢ lb.**
FULLY COOKED **HAM SLICES** **\$1.09 lb.**