

If you want selection...

# HERE IT IS!



Bigger Savings - Better Quality at Gledhill Chevrolet

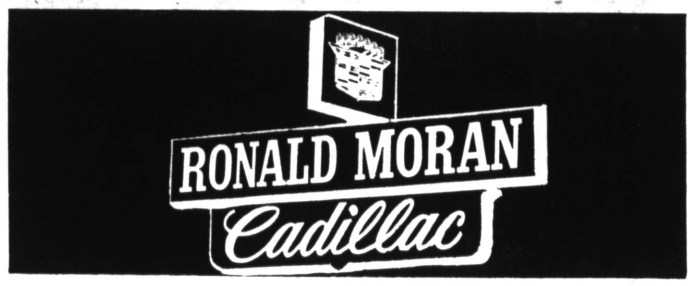
'65 CHEVROLET \$1799 <small>Impala Sport Coupe, V-8, radio &amp; heater, automatic transmission, power steering, NHC 087</small>	'64 FORD \$799 <small>1/2-Ton Pickup, 3-speed, 4 cylinder Lic. #P9728</small>	'66 MERCURY \$1699 <small>Catlin 3-Door Hardtop, Extra sharp, 3-speed, 4 cyl. RTG 216</small>	'62 OLDS \$999 <small>Cutlass 3-Door, Bucket seats, automatic, V-8, R&amp;H, power steering, HOB 566</small>
'64 CHEVROLET \$1799 <small>Impala Super Sport, V-8, R&amp;H, automatic transmission, power steering, White w/white bucket seats, JZY 189</small>	'66 CADILLAC \$4399 <small>Coupe, Full power, Factory Air Conditioning, #P355</small>	'64 FALCON \$899 <small>Wagon, Automatic, radio, heater, OQP 100</small>	'59 CHEV. \$399 <small>Bel Air 4-Door Sedan, 3-speed, 4 cylinder, QHU 488</small>
'63 CHEVROLET \$1399 <small>Wagon, V-8, radio &amp; heater, automatic transmission, power steering, GMY 078</small>	'62 CHEVROLET \$599 <small>Biscayne 3-Door Sedan, 3-speed, 4 cylinder, radio, heater, Lic. #QHT 851</small>	'64 CHEVROLET \$1199 <small>Van, Parcel delivery, KTC 344</small>	'67 CHEVY II \$2399 <small>Nova Hardtop Coupe, Automatic transmission, radio &amp; heater, power steering, THJ 418</small>
'63 CHEVROLET \$1199 <small>Impala Sport Coupe, V-8, automatic transmission, radio, heater, power steering, 11A 917</small>	'66 CHEVROLET \$2499 <small>Impala Wagon, V-8, R&amp;H, automatic, power steering, factory Air Cond., factory warranty, RYB 445</small>	'63 PONTIAC \$1499 <small>Grand Prix V-8, radio &amp; heater, automatic transmission, power steering, Air Conditioning, #P27</small>	'67 CHEVROLET \$2799 <small>Malibu Hardtop Coupe, V-8, automatic, radio &amp; heater, power steering, UIB 976</small>
'62 CHEVROLET \$899 <small>Impala 4-Door Hardtop, V-8, automatic transmission, radio, heater, power steering, GZE 315</small>	'64 PONTIAC \$1599 <small>Grand Prix Sport Coupe, Loaded with extras, A real winner, GOA 378</small>	'62 OLDSMOBILE \$899 <small>Station Wagon, V-8, radio &amp; heater, automatic transmission, power steering, ITX 883</small>	'66 CHEVROLET \$2499 <small>Impala Sport Cpe, V-8, R&amp;H, automatic, trans., power steering, Factory Air Conditioning, RZM 088</small>
'62 CHEVROLET \$1099 <small>Impala Station Wagon, V-8, radio and heater, automatic transmission, power steering, NCK 178</small>	'61 CORVAIR \$399 <small>Monza, 4-speed, radio &amp; heater, QHD 799</small>	'63 PONTIAC \$899 <small>LeMans, V-8, radio, heater, 3-speed, power steering, KJJ 513</small>	'66 CHEVROLET \$2099 <small>Impala 4-Door Hardtop, V-8, radio &amp; heater, automatic transmission, power steering, RRR 416</small>

OVER 350 CARS TO CHOOSE FROM  
 READY FOR IMMEDIATE DELIVERY  
 — NEW OR USED —



1500 W. PACIFIC COAST HIGHWAY At The Harbor Freeway WILMINGTON  
 835-0281 • 775-6046 OPEN EVENINGS & SUNDAYS  
 SERVICE DEPARTMENT OPEN MONDAY AND WEDNESDAY EVENINGS  
 "SOUTH BAY'S NEWEST CHEVROLET DEALER"

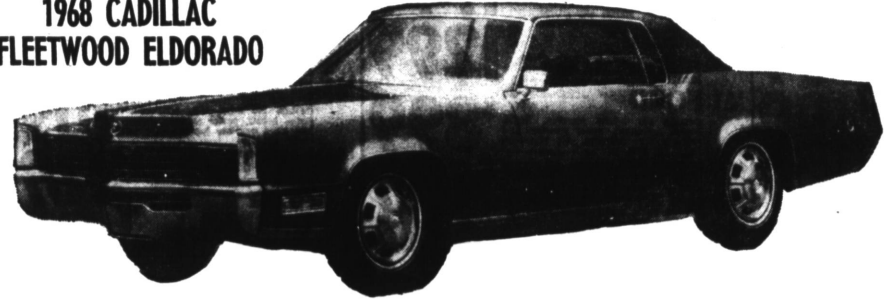
LOW BANK FINANCING AT GLEDHILL CHEVROLET



Now on Display

THE BEAUTIFUL ALL-NEW CADILLAC FOR 1968

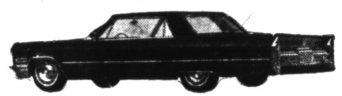
1968 CADILLAC FLEETWOOD ELDORADO



Dramatic front end styling changes to Cadillac's 1968 Fleetwood Eldorado include relocation of the parking lamps to the leading edge of the front fenders and elongating the hood 4 1/2 inches to conceal a new windshield wiper system. The front-wheel-drive Eldorado is powered by Cadillac's new 472 cubic inch engine, which produces 525 foot pounds of torque—the highest of any production passenger car engine in the world.

**Ronald Moran Cadillac, inc.**  
 25 PACIFIC COAST HIGHWAY HERMOSA BEACH  
 NEW CAR DEPARTMENT USED CAR DEPARTMENT  
 FR 4-3436 FR 4-3478

Next best thing to a new Cadillac is one almost new!



1966 Cadillac—All Body Styles Loaded with accessories. In mint condition. AS LOW AS \$4699 AS	'67 Cadillac Fleetwood Beautiful gold with matching interior. All Cadillac extras. This is Cadillac's finest. Cost \$8300 new. Our Price... \$6299
'60 Mercury Colony Park 9 Passenger Wagon. Less than 40,000 miles. Beautiful light blue with matching interior. Ready to go!! \$799	'65 Pontiac Catalina 4-Door Hardtop. Radio & heater, automatic transmission, power steering & brakes, whitewall tires. White with Red interior. In Mint condition. \$1999
'67 Chrysler Station Wagon 9-Passenger. Full power, Factory Air. Less than 10,000 miles. HURRY FOR THIS ONE! \$4499	'65 Chevelle 4-Door V-8, radio and heater, automatic transmission. Exceptionally nice!! \$1399
'66 Olds 98 Holiday Coupe Full power, Factory Air Conditioning. Less than 19,000 actual miles. White with black Landau top & matching interior. Clean as new! \$3499	'65 Olds F-85 Cutlass Convertible. Radio & heater, auto, power steering, white sidewalls. Sold new by us!! Immaculate!! \$1899

AVAILABLE NOW FOR IMMEDIATE LEASE  
 THE ALL-NEW 1968 CADILLAC  
 RONALD MORAN LEASING CO.