

GLEDHILL'S Fall Harvest of Car Values

1968 CHEVROLET TRADE-INS Are Pouring in BUY NOW!

'65 CHEVROLET \$1799 <small>Impala Sport Coupe, V-8, radio & heater, automatic transmission, power steering, NYC 667</small>	'60 CHEVROLET \$399 <small>Impala Hardtop Coupe, V-8, radio and heater, automatic transmission, power steering, heater, #258A</small>	'64 MG SEDAN \$499 <small>3-Door, 4-speed</small>	'63 CHEVROLET \$1499 <small>Super Sport, V-8, radio & heater, 4-speed, Silver gray with black bucket seats, GKP 178</small>
'64 CHEVROLET \$1799 <small>Impala Super Sport, V-8, R.H., automatic transmission, power steering, White w/white bucket seats, JZV 187</small>	'66 CADILLAC \$4399 <small>Coupe, Full power, Factory Air Conditioning, #P385</small>	'51 GMC PICKUP \$349 <small>1/2 Ton, 3-speed, LIC. #29236</small>	'66 CORVETTE \$3899 <small>4-speed, Factory Air, 437 cu. in. engine, 5LK 431</small>
'63 CHEVROLET \$1399 <small>Wagon, V-8, radio & heater, automatic transmission, power steering, GNY 678</small>	'58 MORRIS \$199 <small>3-Door, 4-speed, #P27A</small>	'64 CHEVROLET \$1199 <small>Van, Parcel delivery, KTC 364</small>	'67 CHEVY II \$2399 <small>Nova Hardtop Coupe, Automatic transmission, radio & heater, power steering, THJ 418</small>
'63 CHEVROLET \$1199 <small>Impala Sport Coupe, V-8, automatic transmission, radio, heater, power steering, 11A 977</small>	'63 TRIUMPH \$399 <small>3-Door Sedan, 4-speed, POD 849</small>	'63 PONTIAC \$1499 <small>Grand Prix, V-8, radio & heater, automatic transmission, power steering, Air Conditioning, #P379</small>	'67 CHEVROLET \$2799 <small>Malibu Hardtop Coupe, V-8, automatic, radio & heater, power steering, 10B 974</small>
'62 CHEVROLET \$899 <small>Impala 4-Door Hardtop, V-8, automatic transmission, radio, heater, power steering, 02B 315</small>	'58 BORGWARD \$199 <small>3-Door Sedan, 4-speed, QHL 272</small>	'62 OLDSMOBILE \$899 <small>Station Wagon, V-8, radio & heater, automatic transmission, power steering, 1TK 853</small>	'66 CHEVROLET \$2499 <small>Impala Sport Cpe, V-8, R.H., automatic, trans., power steering, Factory Air Conditioning, RZM 066</small>
'62 CHEVROLET \$1099 <small>Impala Station Wagon, V-8, radio and heater, automatic transmission, power steering, NCK 178</small>	'61 CORVAIR \$399 <small>Moza, 4-speed, radio & heater, QHG 799</small>	'67 BUICK \$4499 <small>Riviera Grand Sport, Full power, Air Conditioning, 11H wheel, 3200 miles, TSE 384</small>	'66 CHEVROLET \$2099 <small>Impala 4-Door Hardtop, V-8, radio & heater, automatic transmission, power steering, RRR 414</small>

OVER 350 CARS TO CHOOSE FROM
 READY FOR IMMEDIATE DELIVERY
 — NEW OR USED —

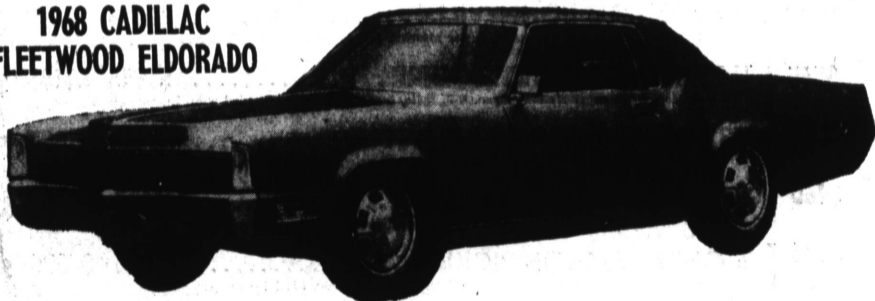


1500 W. PACIFIC COAST HIGHWAY At The Harbor Freeway WILMINGTON
 835-0281 • 775-6046 OPEN EVENINGS & SUNDAYS
 SERVICE DEPARTMENT OPEN MONDAY AND WEDNESDAY EVENINGS
 "SOUTH BAY'S NEWEST CHEVROLET DEALER"

LOW BANK FINANCING AT GLEDHILL CHEVROLET



Now on Display
 THE BEAUTIFUL ALL-NEW CADILLAC FOR 1968
 1968 CADILLAC FLEETWOOD ELDORADO



Dramatic front end styling changes to Cadillac's 1968 Fleetwood Eldorado include relocation of the parking lamps to the leading edge of the front fenders and elongating the hood 4 1/2 inches to conceal a new windshield wiper system. The front-wheel-drive Eldorado is powered by Cadillac's new 472 cubic inch engine, which produces 525 foot pounds of torque—the highest of any production passenger car engine in the world.

Ronald Moran Cadillac, inc.
 25 PACIFIC COAST HIGHWAY HERMOSA BEACH
 NEW CAR DEPARTMENT FR 4-3436 USED CAR DEPARTMENT FR 4-3478

Next best thing to a new Cadillac is one almost new!



1966 Cadillac—All Body Styles Loaded with accessories. In mint condition. AS \$4799 LOW AS	'67 Cadillac Fleetwood Beautiful gold with matching interior. All Cadillac extras. This is Cadillac's finest! Cost \$8300 new. Our Price... \$6299
'60 Mercury Colony Park 9 Passenger Wagon. Less than 40,000 miles. Beautiful light blue with matching interior. Ready to go!! \$799	'64 Ford Galaxie 500 4-Door Hardtop. Radio, heater, automatic, power steering, Air Conditioning. Light blue with matching interior. Exceptionally clean!! \$1499
'67 Chrysler Station Wagon 9-Passenger. Full power, Factory Air. Less than 10,000 miles. HURRY FOR THIS ONE! \$4499	'65 Chevelle 4-Door V-8, radio and heater, automatic transmission. Exceptionally nice!! \$1399
'66 Chevrolet Caprice Coupe. London top, full power, Factory Air, automatic. Real showpiece. \$2899	'65 Olds F-85 Cutlass Convertible. Radio & heater, auto., power steering, white sidewalls. Sold new by us!! Immaculate!! \$1899

AVAILABLE NOW FOR IMMEDIATE LEASE
 THE ALL-NEW 1968 CADILLAC
 RONALD MORAN LEASING CO.