

**PENINSULA
MOTORS**

QUICK ACTION SALE

WE DELIVER THE PRICE! THE CAR! NOW!

NEW 1968 RENAULT TRADE-IN SPECIALS!!

'66 MUSTANG HARDTOP COUPE

Just like new. Only 16,000 actual miles. Turquoise finish with black vinyl interior. Radio, heater, whitewalls, wire wheel covers, floor shift.

\$1895

\$58.55 Mo. for 36 Months

'67 VOLKSWAGEN 2-DOOR SEDAN

Nearly new. 8,000 actual miles. White finish, black vinyl interior, radio, heater, whitewalls and many other deluxe add-ons.

\$1895

\$58.55 Mo. for 36 Months

'63 CORVETTE STING RAY

With detachable hardtop. Automatic, AM-FM radio, whitewalls, power steering & brakes, power windows. A clean, loaded, low mileage car.

\$2595

\$82.62 Mo. for 36 Months

'63 VOLKSWAGEN STATION WAGON

'500' Variant. Light blue vinyl interior, new tires. Looks & runs good.

\$1195

\$35.83 Mo. for 30 Months

Transportation Cars

'57 Renault \$79
Township Sedan. Good body & tires. Needs work.

'62 Renault \$179
Dauphine Sedan. Good body, interior needs work.

'60 Volkswagen \$399
Sedan. Excellent for a Dune Buggy.

'61 Peugeot \$299
'404' Sedan. AM/FM radio, sliding roof, standard transmission. Runs fine. 22-23 MPG.

HIGH QUALITY IMPORT SPECIALS

'62 Peugeot
'404' SEDAN

One of Europe's finest. Jet black, red interior. Whitewalls, sliding roof. Exceptionally clean. Excellent running condition.

\$995

\$31.45 Mo. for 30 Mos.

'65 Renault R-8
4-DOOR SEDAN

Automatic transmission, radio, heater, whitewalls, bottle white, red vinyl interior. Looks & runs fine. Averages 35 miles per gallon.

\$1095

\$36.45 Mo. for 30 Mos.

'66 Renault R-8
4-DOOR SEDAN

Automatic, radio, heater, bottle white, light vinyl interior. Looks & runs fine. Averages 35 miles per gallon.

\$1195

\$36.83 Mo. for 36 Mos.

Sport Cars

'64 Triumph TR-4 \$1595
Roadster. Radio, heater. Excellent condition. Cherry red finish, white top. Black leather interior.

'63 MGB Roadster \$1495
Candy apple red, red top, black leather interior. Radio, heater, whitewalls.

'62 Austin Healey \$1395
'3000' Roadster. Bright red, new black top. New tires, wire wheels, radio and heater.

'63 Caravelle \$995
Convertible with detachable hardtop. 4-speed, silver finish with black bucket seat interior. Averages 28 MPG.

LOOK!

THE ALL
NEW
1968



RENAULT 10

\$1795

PLUS
T & L
D & H
P.O.S.

Renault 10 gives you big-car comfort, small-car economy, and luxury-car craftsmanship plus the automotive features that mean roadability. Disc brakes on all four wheels, unit-body construction and 4-wheel independent suspension are standard equipment on Renault 10. Automatic transmission optional.

JUST \$53.97 Per Mo. for 36 Mos.
Includes Tax and License & all carrying charges.
AFTER \$299 DOWN CASH OR TRADE. Your old car will probably make the down payment.



PENINSULA MOTORS

25308 CRENSHAW BLVD. • TORRANCE • Tel. 325-7401, E.A. Toll Free 775-2482
OPEN MONDAY THRU FRIDAY 9 A.M. 'TIL 9 P.M.
SATURDAY & SUNDAYS 9 A.M. 'TIL 6 P.M.

RENAULT

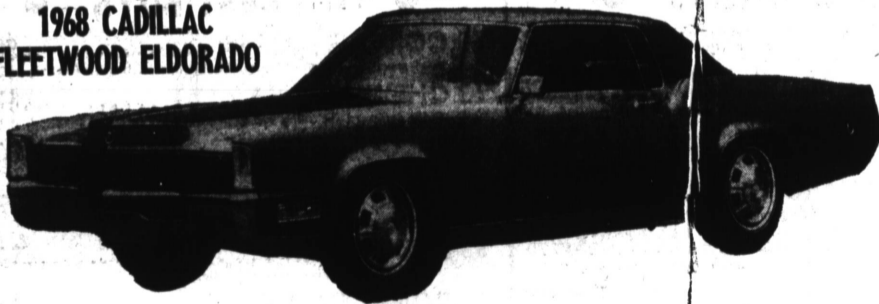


RONALD MORAN
Cadillac

Now on Display

THE BEAUTIFUL ALL-NEW CADILLAC FOR 1968

**1968 CADILLAC
FLEETWOOD ELDORADO**



Dramatic front end styling changes to Cadillac's 1968 Fleetwood Eldorado include relocation of the parking lamps to the leading edge of the front fenders and elongating the hood 4 1/2 inches to conceal a new windshield wiper system. The front-wheel-drive Eldorado is powered by Cadillac's new 472 cubic inch engine, which produces 525 foot pounds of torque—the highest of any production passenger car engine in the world.

Ronald Moran Cadillac, inc.

25 PACIFIC COAST HIGHWAY

NEW CAR DEPARTMENT

FR 4-3436

HERMOSA BEACH

USED CAR DEPARTMENT

FR 4-3478

Next best thing to a
new *Cadillac*
is one almost new!



1966 Cadillac—All Body Styles

Loaded with accessories. In mint condition.

AS LOW AS **\$4799**

'65 Cadillac Convertible

Full power, Factory Air. Gorgeous green with top to match. A low mileage, one owner beauty.

\$3699

'67 Cadillac Fleetwood

Beautiful gold with matching interior. All Cadillac extras. This is Cadillac's finest! Cost \$8300 new. Our Price...

\$6299

'64 Ford Galaxie 500

4-Door Hardtop. Radio, heater, automatic, power steering, Air Conditioning. Light blue with matching interior. Exceptionally clean!

\$1499

'67 Chrysler Station Wagon

9-Passenger. Full power, Factory Air. Less than 10,000 miles. HURRY FOR THIS ONE!

\$4499

'62 Chevrolet Impala

Super Sport Coupe. Radio, heater automatic, power steering, Factory Air, etc. Nice inside and out. Another Ronald Moran Special.

\$1299

'66 Chevrolet Caprice

Coupe. London top, full power, Factory Air, automatic. Real showpiece.

\$2899

'65 Olds F-85

Cutlass Convertible. Radio & heater, auto., power steering, white sidewalls. Sold new by us! Immaculate!

\$1899

AVAILABLE NOW

FOR IMMEDIATE

LEASE

THE ALL-NEW 1968 CADILLAC
RONALD MORAN LEASING CO.