

If You're Particular About The Beef You Serve . . . Serve The Best . . . Certified U.S.D.A. Choice Steer Beef!



Just What You've Been Waiting For!


BEEF SALE



If You're Particular About The Beef You Serve . . . Serve The Best . . . Certified U.S. Choice Steer Beef . . . From Foods Co. . . . Tenderly Yours!

U.S.D.A. CHOICE • CENTER CUT

7-BONE CHUCK STEAK **49¢** lb.



U.S.D.A. CHOICE STEER BEEF

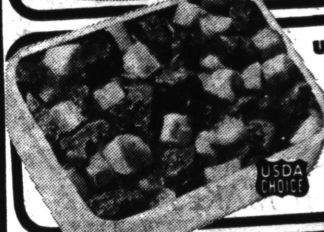
BONELESS STEAKS **98¢** lb.

• CUBE • BBQ • TOP OR BOTTOM ROUND



U.S.D.A. CHOICE BEEF

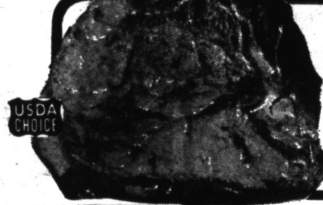
LEAN CUBES OF TENDER STEW MEAT **79¢** lb.



USDA CHOICE STEER BEEF

PORTER-HOUSE STEAKS **\$1.19** lb.

CLOSELY TRIMMED TAILS REMOVED



U.S.D.A. CHOICE STEER BEEF

LEAN BEEF RIBS SHORT RIBS **33¢** lb.



U.S.D.A. CHOICE STEER BEEF

OVEN-READY RUMP ROAST **79¢** lb.



LEAN BLADE CUT

CHUCK STEAKS **39¢** lb.

Fresh Extra Lean GROUND CHUCK **59¢** lb.

Certified USDA CHOICE Steer Beef



ROUND STEAK **79¢** lb.

LEAN CUTS

Certified USDA CHOICE Steer Beef



RIB & BONELESS FAMILY & ROUND STEAKS **89¢** lb.

ALSO CALIFORNIA CHUCK STEAKS

Certified USDA CHOICE Steer Beef



T-BONE & CLUB STEAKS **\$1.09** lb.

TAILS REMOVED

Certified USDA CHOICE Steer Beef




U.S.D.A. CHOICE STEER BEEF

BREAKFAST & BUTTER STEAKS **\$1.09** lb.



U.S.D.A. CHOICE STEER BEEF

BONELESS SHOULDER CLOD ROAST **89¢** lb.




U.S.D.A. CHOICE STEER BEEF

ROUND or O-BONE SWISS STEAK **75¢** lb.



U.S.D.A. CHOICE STEER BEEF

BONELESS TOP SIRLOIN STEAKS **\$1.49** lb.



U.S.D.A. CHOICE BEEF

BONELESS BRISKET OF CHUCK ROAST **79¢** lb.



U.S.D.A. CHOICE STEER BEEF

BONELESS NEW YORK or SPENCER STEAKS **\$1.89** lb.

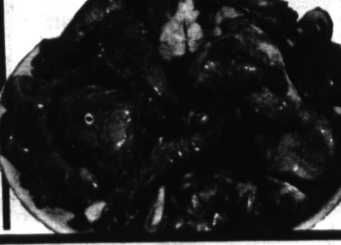


SEAFOODS

NORTHERN CAUGHT **HALIBUT STEAK** **69¢** lb.

PERFECT FOR LOBSTER SERVED WITH STEAK • STAR-KIST **LOBSTER TAILS** **\$1.69** 1/2 doz.

MEAT AND BAY **FISH STICKS** **49¢** lb.

FARM FRESH **FRYER PARTS**

FRYER LEGS & BREASTS **49¢** lb.

FRESH LIVERS . . . **59¢**

WINGS & GIZZARDS . **39¢**

FRYER BACKS & NECKS **10¢**



EXTRA LIGHT OR DARK MEAT

4 LEGGED or DOUBLE BREASTED FRYERS **39¢** lb.

YOUR CHOICE



GINGHAM SLICED BACON **59¢** 1-LB. PKG.

Farmer John Pure Pork **LINK SAUSAGE** **3** 3-OZ. PKGS. **\$1.00**

