

# BUY NOW! Fall Harvest of Car Values

1968  
CHEVROLET  
TRADE-INS  
Are Pouring in  
BUY NOW!

You reap the savings on these pick-of-the-crop cars Priced to move fast!!

'64 CHEV. VAN \$1199 <small>Facel Delivery License #KTC 564</small>	'66 CHEVROLET \$2399 <small>Impala Super Sport, V-8, radio &amp; heater, automatic transmission, power steering. #P328.</small>	'67 MALIBU \$2699 <small>Sport Coupe, V-8, radio &amp; heater, Auto. Trans., power steering, vinyl trim, 8,000 miles. Lic. #UIB 976.</small>	'62 CHEVROLET \$1299 <small>Impala 9-Passenger Wagon, V-8, radio &amp; heater, automatic transmission, power steering. Lic. #QWG 549.</small>
'66 CADILLAC \$4499 <small>Coupe, Full power, Facel. Air Cond., Low mileage, Jet Black with vinyl top. #P355.</small>	'63 CHEVROLET \$1099 <small>Impala 4-Door Hardtop, V-8, radio &amp; heater, automatic transmission, power steering. License #CZL 496.</small>	'63 CHEVROLET \$1199 <small>Impala Wagon, V-8, radio &amp; heater, auto. Trans., power steering, air conditioning. Stock #7498B.</small>	'62 CHEVROLET \$1099 <small>Impala Wagon, V-8, radio &amp; heater, automatic transmission, power steering. License # NCK 178.</small>
'64 CHEVROLET \$1299 <small>Malibu Super Sport, 3 Speed Radio &amp; heater. #6-128D.</small>	'63 CHEVROLET \$899 <small>Greenbrier, Automatic transmission, radio &amp; heater. New engine. #7579A.</small>	'66 BUICK 4-DR. \$2099 <small>Radio &amp; heater, automatic transmission, power steering, factory air conditioning. License #RQP 728.</small>	'64 PONTIAC \$1699 <small>Catalina 4-Door, Hardtop, V-8 radio heater, auto. trans., power steering, Factory air cond. License #5IC 972.</small>
'67 CHEVY II \$2299 <small>New 3-Door Sport Coupe, Automatic transmission, radio &amp; heater, power steering. License #YHM 718.</small>	'64 OLDS \$1799 <small>Starfire, V-8, radio &amp; heater, automatic transmission, power steering, Facel. air. Extra sharp. Lic. #OUJ 493.</small>	'64 CHEVROLET \$1399 <small>Impala Sport Coupe, Radio &amp; heater, automatic transmission. License #ONP 181.</small>	'64 FORD PICKUP \$999 <small>1/2-Ton Styline, V-8, 3 speed, radio &amp; heater. License #P 8217A.</small>

BUY NOW AND SAVE ON THESE SPECIAL BUYS!!

OVER  
**350 CARS**  
TO CHOOSE FROM  
IMMEDIATE  
DELIVERY  
ON THE CAR OF YOUR CHOICE  
NEW OR USED

**Gledhill** 

1500 W. PACIFIC COAST HIGHWAY At The Harbor Freeway WILMINGTON  
835-0281 • 775-6046  
OPEN EVENINGS & SUNDAYS  
SERVICE DEPARTMENT-OPEN MONDAY AND WEDNESDAY EVENINGS  
"SOUTH BAY'S NEWEST CHEVROLET DEALER"

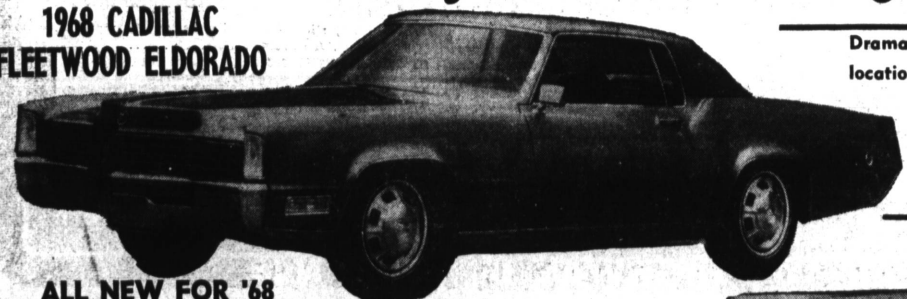
LOW  
BANK  
AT  
FINANCING  
GLEDHILL  
CHEVROLET

## TAKES GREAT PRIDE IN

# Introducing

The Beautiful all New Cadillac For 1968!!

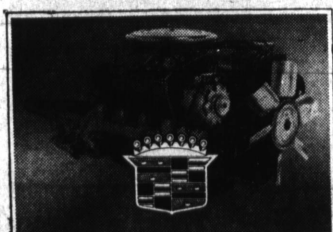
1968 CADILLAC FLEETWOOD ELDORADO



Dramatic front end styling changes to Cadillac's 1968 Fleetwood Eldorado include re-location of the parking lamps to the leading edge of the front fenders and elongating the hood 4 1/2 inches to conceal a new windshield wiper system. The front-wheel-drive Eldorado is powered by Cadillac's new 472 cubic inch engine which produces 525 foot pounds of torque—the highest of any production passenger car engine in the world.



1968 CADILLAC COUPE DEVILLE



Exterior changes in the 1968 Cadillac, as shown in this Coupe de Ville, include a new grille and larger parking lights in the front, redesigned cornering lights and new marker lights on the side plus a new deck lid and all chrome bumper in the rear. On the inside, safety related product improvements include: added cushioning in the instrument panel, use of low luster paint on interior components to reduce glare, recessed door handles, adding padding in the front seat backs and a new inside rear view mirror which will bend away from either a forward or a side impact.

Ronald E. Moran Cadillac, inc. 25 Pacific Coast Highway

**HERMOSA BEACH**

AVAILABLE... FOR IMMEDIATE LEASE  
THE ALL NEW 1968 CADILLAC  
FROM...  
RONALD E. MORAN LEASING CO.

**FR 4-3436**