

SEE

**THE ALL NEW  
FORD  
FOR  
1968**

IN OUR SHOWROOM SEPT. 22nd

**BEST BUYS  
OF THE YEAR  
ARE AT  
KOTT &  
SMOLAR**



SINCE 1930  
**Ford**

NEW CAR DEPARTMENT  
AND SERVICE  
TE 5-6621

USED CARS  
TE 5-6624

336 West Anaheim, Wilmington —  
3 Miles West of the Long Beach  
Freeway ... 11 Blocks East of  
Harbor Freeway.

'65 CHEVROLET \$1899 El Camino, V-8, automatic, power steering, Fine condition. #U94.	'58 CADILLAC \$599 Full power. Runs Real Good. Stock #US12.	'63 FORD \$999 Ranchero. Low mileage. All Red Finish. A-1 Warranty. Stock #U99.	'64 CHEV Wagon \$1599 4 Passenger, V-8, automatic, radio, heater, power steering. Stock #U96.
'59 FORD \$399 Galaxia Hardtop, V-8, radio, heater. Runs good. #U 98. Full Price	'65 FORD \$1799 Country Sedan. Radio, heater, automatic transmission, power steering. A-1 warranty. #U 987. Only	'61 CHEVROLET \$899 4-Door Wagon. The Brookwood. A-1 Warranty. Stock #U991.	'66 MUSTANG \$2299 Hardtop, 4 cylinder, automatic, radio, heater. Clean car. Stock #U-723
'65 FORD \$1899 3-Door Hardtop, 289 cubic inch V-8, radio, heater, automatic transmission, power steering. Stock #U937.	'63 RAMBLER \$999 Wagon. A real clean car. #U 989. Full Price	'63 FORD \$1199 9 Passenger Country Sedan. A one-owner, low mileage wagon. A-1 warranty. #U 1036. Full Price	'58 FORD \$149 Convertible. Good transportation. #U 911
'64 FALCON \$1199 4-Door Station Wagon, radio, heater, automatic transmission, A-1 warranty. Stock #PU723	'65 RAMBLER \$1799 Classic 640 Station Wagon, V-8, radio, heater, automatic transmission. Stock #U823.	'64 FORD \$2499 T-Bird. Full power, factory air conditioning. A-1 Warranty. Stock #U344.	'56 CHEVROLET \$599 Pickup with insulated food van. Runs good. #U 954. Full Price
'65 FORD \$2299 LTD 4-Dr. Hardtop. Less than 14,000 miles. Radio, heater, automatic transmission, power steering, Air Conditioning. #U 1023. Only	'64 FORD \$1599 Econo. Bus. Lots of space in this one. #PU 991. Only	'62 MERCURY \$1099 Meteor 3-Door Club Sedan. Radio, heater, overdrive. A-1. Stock #U958.	'65 CADILLAC \$3999 Couze DeVille. Full power, factory air. Excellent condition. Stock #U84
'66 FALCON \$1599 4-Door, 4 Cylinder, 3 speed. For economy. Radio & heater. Stock #U71	'62 FORD \$999 Galaxia 506 Convertible. V-8, automatic transmission, radio, heater, power steering. A-1 condition. Stock #U726.	'62 FORD F-100 \$999 1/2 Ton Pickup, V-8, 3 speed. Priced to sell. #U910	'65 MUSTANG \$1699 Hardtop. Light yellow. Will be fast at this price. #756
'67 CHEVROLET \$2999 Malibu Super Sport. 394 cu. in. V-8, power steering, Strato bucket seats, 4 speed trans., stereo tape. Like new thru out. #U 1063. Full Price	'66 MUSTANG \$2199 Life Blue Color. Automatic transmission, radio, heater, power steering. Fine condition. Stock #U495.	'65 T-BIRD \$2999 Landau Hardtop. Full power. Factory Air. A-1 condition. #PU 1017	<b>'67 VW CAMPER</b> Less than 10,000 miles. Like new. Sleeping accommodations, ice box, table, water tank, paneled interior, radio, heater, stereo tape recorder, outside mirrors, etc. <b>PRICED TO SELL!</b>
'65 CHEVROLET \$1999 Imalee 3-Dr. Hardtop. Beautiful white with red interior. Low mileage. Fine condition. #U 1062. Full Price	'64 International \$899 1/2 Ton Pickup. A real good buy! #U 1001. Only	'64 CHEVROLET \$1899 Impala Super Sport. V-8, radio, heater, automatic trans., power steering. A fine car. #PU 1018. Full Price	
	'67 MUSTANG Save \$500 Hardtop. To choose from. FROM NEW CAR PRICE	'65 FORD \$1499 Factory air conditioning, automatic, radio, heater Stock #U889	

**KOTT & SMOLAR**

336 W. ANAHEIM, WILMINGTON  
3 MILES WEST OF LONG BEACH FREEWAY...  
11 BLOCKS EAST OF HARBOR FREEWAY.



NEW CAR DEPARTMENT & SERVICE — TE 5-6621  
USED CAR DEPARTMENT — TE 5-6624

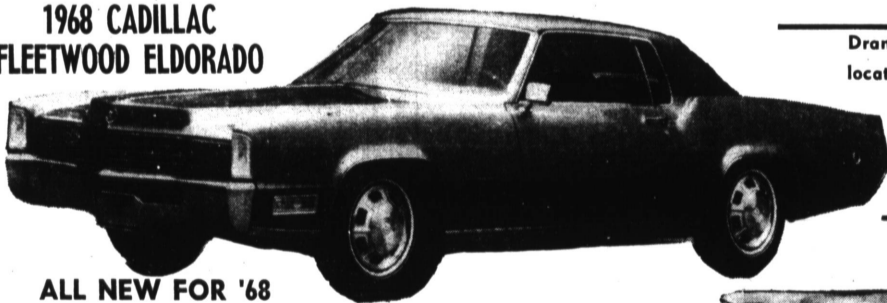


**TAKES GREAT PRIDE IN**

**Introducing**

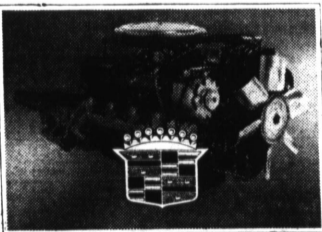
*The Beautiful all New Cadillac For 1968!!*

1968 CADILLAC  
FLEETWOOD ELDORADO



Dramatic front end styling changes to Cadillac's 1968 Fleetwood Eldorado include re-location of the parking lamps to the leading edge of the front fenders and elongating the hood 4 1/2 inches to conceal a new windshield wiper system. The front-wheel-drive Eldorado is powered by Cadillac's new 472 cubic inch engine which produces 525 foot pounds of torque—the highest of any production passenger car engine in the world.

ALL NEW FOR '68



Exterior changes in the 1968 Cadillac, as shown in this Coupe de Ville, include a new grille and larger parking lights in the front, redesigned cornering lights and new marker lights on the side plus a new deck lid and all chrome bumper in the rear. On the inside, safety related product improvements include: added cushioning in the instrument panel, use of low luster paint on interior components to reduce glare, recessed door handles, adding padding in the front seat backs and a new inside rear view mirror which will bend away from either a forward or a side impact.



1968 CADILLAC COUPE DEVILLE

Ronald E. Moran Cadillac, inc. 25 Pacific Coast Highway

**HERMOSA BEACH**

**FR 4-3436**