

Bandits Work More, Make Less

Capitol News Service
SACRAMENTO — California has more bank robbers than any other state in the union, but they don't make as much.

This was revealed in a statistical study issued today by Attorney General Thomas C. Lynch, who said robberies in

California have now exceeded the annual record set during the great depression.

The Lynch report, made by his bureau of criminal statistics, covered bank robberies in California from 1931 to 1965, and presented a picture which has never been fully developed before.

"The average bank robber's

take in California," the report said, was less than half the haul made at banks in other parts of the country. "The average modern California bank robber was a lone bandit who passed a note to a teller and threatened the teller with a gun.

"The typical bank loss to such robbers was \$732. Firearms were threatened or displayed in 78 per cent of the robberies."

The total take, however, mounts up into more impres-

sive sums, the report says. California's annual loss for the past 35 years has amounted to \$4,583,000.

The report said that about two-thirds of California's bank robberies in 1965 resulted in arrests, and that this is about twice the rate for other kinds of robbery.

Major contributor of the high rate in this state is its leadership in branch banking. It has about 2,300 branch banks and only 200 main banks.

Parking Restrictions, Stop Signs Approved

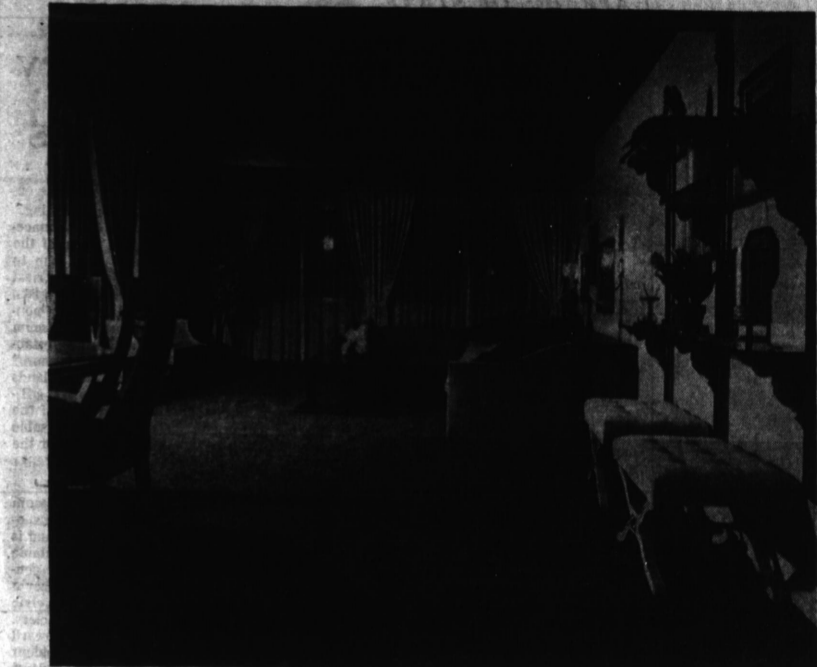
Adoption of new traffic regulations in the Victoria Park area by the County Board of Supervisors was announced today by Supervisor Burton W. Chace.

Between the hours of 7 a.m. and 5 p.m., school days only, parking will be prohibited, beginning this week, on the following sections of county roads:

- The east side of Broadacres Avenue between Turmont Street and a point 260 feet northerly thereof.
- The south side of Kramer Avenue between Gunlock and Andmark avenues.
- The west side of Gunlock Avenue between Turmont Street and Kramer Drive.
- The north side of Turmont Street between Broadacres Avenue and a point 250 feet easterly thereof.

At the same time, Chace noted that the board has adopted the following boulevard stop regulations:

- The east side of Broadacres Avenue and both sides of Gunlock Avenue at their intersections with Kramer Avenue.
- Both sides of Turmont Street at its intersections with Gunlock Avenue and Tajauta Avenue.



NEW IDEAS . . . Drama in interior design is accomplished here in the bold lines of The Continental, a featured home at The Woods' Decorator's Row. Use of exposed beam ceiling contributes added warmth

to the spacious and comfortable living room. The Continental is one of six Balanced Power models on display on Decorator's Row at the Ray Watt development.

New Decorating Ideas Featured On The Woods' Decorator's Row

"For the first time in the Southwest area we have the most complete presentation of home decorating and furnishing ideas ever assembled," says Wes Lohrey, sales director of Ray Watt's Del Amo Woods.

Del Amo Woods is an award-winning master planned community designed for growing families. The walled community offers a protective atmosphere for growing children of all ages.

The luxury three-, four- and five-bedroom, 3-bath homes with floor plans ranging in

size from 1,800 to 2,295 square feet offer the finest in tri-level living. Tri-level design provides the entire family with complete privacy. Separate "living zones" occupy different levels, with sleeping areas privately located away from entertainment and activity centers.

AT THE WOODS there are 29 individually styled exteriors, each with a personal distinctive touch, to choose from. Each of the Balanced Power homes have built-in range and oven, dishwasher,

and disposer. Other quality features include 100 per cent continuous filament Nylon carpeting and large fireplaces with gas log lighters.

Starting at \$32,500, Del Amo Woods is "one of the best buys in a new home today," states Lohrey.

FREWAY CLOSE. The Woods is set in the heart of the Southwest area, just one-quarter mile west of the Harbor Freeway.

The entrance to The Woods is on Sepulveda Boulevard between Vermont and Norman-

die avenues. The furnished models are open from 10 a.m. until dark.

Student Conference to Begin at Christian Science Headquarters

More than 5,000 students from colleges and universities around the world — including 16 from El Camino and Harbor Colleges — will assemble for a three-day conference at the denominational headquarters of the Christian Science Church in Boston Aug. 24.

They will discuss everything from premarital chastity and the "identity crisis" to the problems of emerging nations and world peace.

From a modest beginning 12 years ago, these student conferences have developed rapidly into a major biennial event. Chartered buses, planes, and group flights have been arranged by many of the students coming from distant points, including

England, Germany, and Australia.

EL CAMINO students who will attend the Boston conference include Janis Albright, Daryl Bissell, Fred Babb, Carol Babb, David Jarrett, Julie Metzger, Jim Rickman, Steve Maybury, Roger Adams, Charlotte DeVoss, and Steve Forest.

Kathy Macrae, a student at Principia College, and Sharon Wood, who attends the University of California at Santa Barbara, also will attend. Both are Torrance residents.

Advisors Mrs. Virginia Rank and Mrs. Marsha Savant will accompany the local delegation.

Among the subjects scheduled for consideration are: Cheating, drugs, the "new morality," birth control, the "death of God" theology, spiritual values in the creative arts, resolving social conflicts, and leadership in government.

A special guest speaker will be Dr. Harrell Beck, Professor of Old Testament at Boston University. The keynote address will be given by Erwin D. Canham, editor-in-chief of The Christian Science Monitor.

Deft Names West Coast Sales Boss

William (Bill) Stauder has been named west coast sales manager for Deft, Inc., according to W. E. Stovall, vice president and director of marketing.

Deft, headquartered at 612 Maple Ave., makes wood finishing products for sale throughout the world.

Stauder, a veteran in the paint industry, will have complete responsibility for sales in Arizona, California, Oregon, Washington, and New Mexico.

PREVIOUS conferences have drawn students from countries of Eastern Europe, Africa, Asia, and Latin America — with 667 colleges and universities of 36 nations represented. More are expected this year.

During the three-day period, some 18 hours will be spent in assembly sessions, with most of this time given to student papers and discussion.

One of the objectives will be to explore the relevance of Christian insight as a radical healing force in the whole range of human experience.

Press-Herald
 Every Wednesday and Sunday
 228 W. Sepulveda Blvd., Torrance

1967
 PRIZE-WINNING NEWSPAPER
 of the
CALIFORNIA NEWSPAPER PUBLISHERS ASSOCIATION

Member of
 National Newspaper Association
 Calif. Newspaper Publishers Assn.
 L.A. Suburban Newspapers, Inc.
 Verified Audit Circulation
 The Riesen Co., National Reps.
 GLENN W. PFELL
 Publisher

REID L. SUNDY
 Editor and Co-publisher
 Jerry Reynolds, City Editor
 Gene Roberts, Display Adv. Mgr.
 Jay DeLong, Classified Mgr.
 Evelyn Sullivan, Class. Office Mgr.
 Darrell Westcott, Circulation Mgr.

Advertisement rates: Best circulation of general circulation by Superior Court, Los Angeles County, Adjudicated Decree No. C219470, June 30, 1964.

SUBSCRIPTION RATES: By Carrier, 50¢ a month. Mail subscriptions, \$18.00 a year. Circulation office at DA 5-5125.

RCA COLOR TV
 FOR COLOR SO REAL YOU'LL THINK YOU ARE THERE!

RCA VICTOR New Vista COLOR TV

- Powerful 25,000-volt Color Chassis, Rectangular RCA Hi-Lite Color Tube with Permo-Chrome
- Super-powerful New Vista VHF, Solid State UHF tuners.
- New RCA solid integrated circuit performs key FM sound functions
- Automatic Color Purifier "cancels" magnetism
- One-Set fine tuning, stay-set volume control

(ONLY) \$395 PER WEEK

FRED'S
 Furniture—Appliance—Television
 703 W. PACIFIC COAST HWY.
 WILMINGTON • TE 4-6427
 HOURS: DAILY 9 TO 8 P.M.
 SAT. & SUN. 9 TO 5 P.M.

- Easy Terms
- 3 Years to Pay
- Free Delivery
- BankAmericard
- Service Installation

AT McMAHAN'S DOWNTOWN!
NO MONEY DOWN

Colonial Bedrooms... **SALEM MAPLE** Finish
 Colony Mica Plastic Tops!

Special value! Coordinated bedroom pieces, from the famous Colony Collection . . . in selected hardwoods with Salem Maple finish. PLUS high pressure laminated plastic tops! PLUS real convenience . . . no down payment!

Widest possible choice of impressively styled, ruggedly built Open Stock pieces. Choose your own group.

\$79

PRACTICALLY INDESTRUCTIBLE!
 COLONY MICA high pressure laminated plastic tops withstand dents, scratches . . . and scorches, stains just wipe away. Built to last for years to come . . . and take the worry out of furniture care!

CHOOSE FROM OPEN STOCK
 Pick a starter group now, add pieces later. Mix and match for many distinctive room arrangements.

CHECK THESE FEATURES

- Mortised, dovetail, Duratized construction
- Dust-proofed top drawers
- Male and female contour-guided drawers throughout
- Exclusive plastic glides—easy drawer fitting
- Matching high pressure plastic tops
- Rich deep-colored 4-coat finish
- Anticure brass finished drawer pulls
- Tilted mirrors—steel brackets—

Student's desk \$59
 Corner Table \$24
 Bachelor Chest \$49
 Hutch Bookcase \$35

Full-Size Double Dresser and Mirror \$89

The Queen's Dresser \$109
 9 Spacious Drawers

The King's Chest 3-Drawers \$74

Bookcase Bed \$42
 Canopy Bed \$59

SHIPLAP PINE
6" LIN. FT.
HERWOOD
 Building Supplies
 24500 S. Normandie
 DA 6-5146

Custom UPHOLSTERY SALE SPECIAL 3 DAYS ONLY
BOTH YOUR DIVAN and CHAIR

REUPHOLSTERED LIKE NEW . . . INCLUDING FABRIC AND LABOR. 5 YEAR GUARANTEE

\$79

When Other Estimates Are Too High . . . Call for Free Estimate

CALL **327-3000**

SUN UPHOLSTERING CO. 14056 SO. CRENSHAW BLVD.

FREE Pickup & Delivery Expert Workmanship

Webbing Beest Rattle Springs

Hand Tufting Reupholstering

Tighten Frames Pudding Reest

WE GIVE ESTIMATES TO HOTELS, APARTMENTS, BUSINESS OFFICES
 Choose from a Large Selection of Fabrics in Your Own Home. ALSO Low Sale Prices for Pillow-Back and Loose-Cushion Sofas, Sectionals and Hide-A-Beds

McMahan's FURNITURE STORES

DOWNTOWN TORRANCE
 —EL PRADO AT SARTORI STREET—
 PHONE FA 8-1252 • FREE PARKING

• NO RED TAPE TO OPEN YOUR ACCOUNT
 • WE CARRY OUR OWN CONTRACTS
 • IMMEDIATE DELIVERY
 • SE HABLE ESPANOL

PANEL BUNK BED \$59⁰⁰ / Wagon Wheels BUNK BED \$60⁰⁰ / SPINDLE BUNK BED \$49⁰⁰