

Which Fine Foods Co. Meat Is Best For Your Christmas Dinner? • It's Foods Co. for the widest selection! • Save at Foods



Choose Your Family's Favorite From This Big Selection!



TURKEYS

All Sizes To Serve Your Family Best!

SHOP EARLY
Special Christmas Eve Hours
Saturday, December 24th, 9 a.m. to 7 p.m.
Closed Christmas Day
Sunday, December 25, 1966
OPEN Monday, December 26th
Special Hours, 10 a.m. to 7 p.m.



USDA CHOICE BEEF
CLUB ROAST
SMALL RIB END
98^c lb
USDA CHOICE BEEF
CLUB STEAK
LEAN CUTS
\$1.09 lb.
USDA CHOICE BEEF
SPENCER STEAKS
EYE OF THE RIB
\$1.79 lb.

DUCKLINGS
CALIFORNIA GROWN
3-4 LB. AVG. **49^c** lb

USDA CHOICE STEER BEEF
STANDING RIB ROAST
WHOLE OR LARGE END
79^c lb.

NORBEST GRADE A TURKEYS
TOM TURKEYS
FROZEN 18-22 POUND AVG. **37^c** lb
HEN TURKEYS
FROZEN 8-12 POUND AVG. **39^c** lb

NORBEST ROAST-RITE TURKEYS
• BROAD-BREADED • PLUMP
• TENDER • DELICIOUS
TOMS 18-22 LB. AVERAGE **33^c** lb.
HENS 8-12 POUND AVERAGE **35^c** lb.

SWIFT • GRADE A **BUTTERBALL TOM TURKEYS** **45^c** lb
SWIFT • GRADE A **HEN TURKEYS** **49^c** lb
HONEYSUCKLE BONELESS TURKEY ROAST 2 1/2 LB. PKG. **\$3.29**
LARGE 4-6 LB. AVG. **ROASTING CHICKENS** **49^c** lb

WE HAVE A COMPLETE SELECTION OF ALL HOLIDAY POULTRY — DUCKS, GEES, JUNIOR AND STUFFED TURKEYS, TURKEY ROLLS, ROASTERS AND FRYING CHICKENS. WE HAVE THE ITEM TO FILL YOUR HOLIDAY NEEDS!

FRESH TURKEYS
Treat your family to the finest this year—a fresh California Grown Turkey. Complete selection of sizes.
TOMS 47^c lb **HENS 49^c lb**

HAMS



LUER, HORMEL, FARMER JOHN
SHANK HALF HAMS
SMOKED—8-10 LB. AVG. WT.
49^c lb.

BACON SEAFOOD

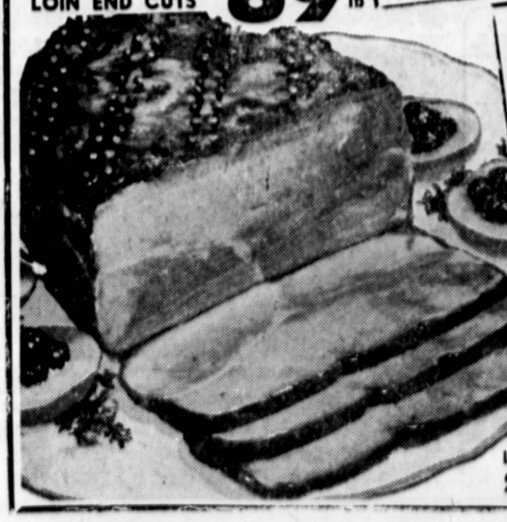
RATH SMOKED CANADIAN BACON
BY THE PIECE BONELESS PORK LOIN END CUTS
89^c lb

LUER 1st QUALITY BACON
ONE POUND PACKAGE
59^c lb
Patrick Cudahy Eastern SLICED BACON **75^c** lb

GREEN SHRIMP
MEDIUM SIZE **\$1.29** lb.
OYSTERS
WESTERN 10 OZ. JAR **89^c**
LUTEFISH
NORWEGIAN **79^c** lb

FRESH • PERFECT FOR COCKTAILS
DUNGENESS CRABS
1 TO 2 POUND AVERAGE
49^c lb.

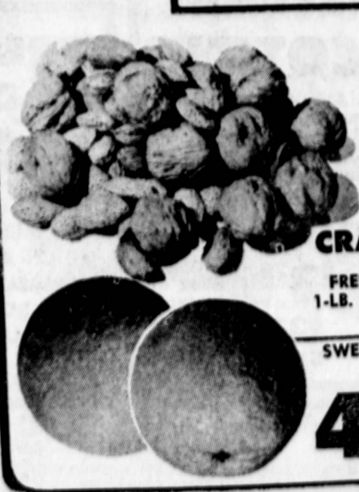
SMOKED BUTT END HAM 4-6 LB. AVG. **65^c** lb
PRE-CARVED SMOKED PICNICS 6-8 LB. AVG. **49^c** lb
HORMEL • BONELESS BUFFET HAMS **\$1.09** lb.



NO WASTE—CANNED DUBUQUE HAMS
75^c POUND CAN
4 lb. can **\$3.59**
SERVES 14 to 16

SPRINGFRESH CREAM CHEESE
8 OZ. PKG. **29^c**

GOLDEN CREME SOUR CREAM PINT CARTON **47^c**
PEN & QUILL PARTY DIPS HALF PINT 25c **33^c**
LASCCO • KING CRAB OR SHRIMP COCKTAILS ALL FLAVORS 8 OZ. CUP **98^c**
4 OZ. GLASSES



HOLIDAY NUTS
• WALNUTS
• ALMONDS
• FILBERTS
• BRAZILS
• CHESTNUTS
OCEAN SPRAY CRANBERRIES FRESH 1-LB. BOX **29^c**
SWEET • JUICY • NAVEL ORANGES LB. CELLO BAG **39^c**
U.S. NO. 1 RED VELVET YAMS **25^c** lb
LARGE • RIPE • FUERTE **AVOCADOS** 2 for 29c