

# GOLDEN WEST

## WHOLESALE MEATS

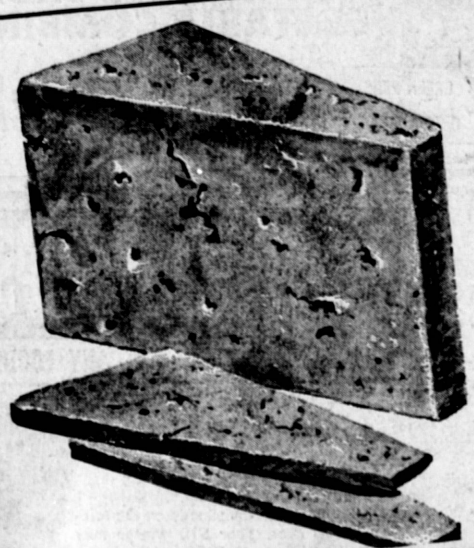
**OPEN Daily**  
MON. thru SAT.  
9 a.m. to 6 p.m.

**22411 HAWTHORNE BLVD. IN TORRANCE**  
**12211 HAWTHORNE BLVD. IN HAWTHORNE**

THINGS YOU OUGHT TO KNOW: AT GOLDEN WEST WE HAVE NO HORSE RACING, NO BINGO, NO POTS OR PANS. JUST QUALITY MEATS AT THE LOW-EST POSSIBLE PRICES . . . AND YOU PAY FOR NO STAMPS!!

**SPECIAL PRICES GOOD Thursday Friday & Saturday**

The Home of The Low Price King • The Home of The Low Price King • The Home of The Low Price King • The Home of The Low Price King • The Home of The Low Price King



**CHEESE**  
★ SALE ★  
SLICED AMERICAN  
MONTEREY JACK  
Mild Cheddar LONGHORN  
Gen. IMPORTED SWISS

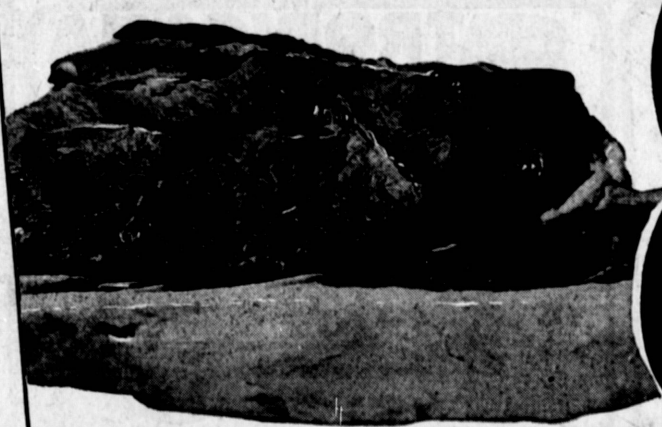
Your Choice **59**¢ lb

**BONELESS ROLLED**  
SIRLOIN TIP OR TOP ROUND  
**ROAST** **69**¢ lb  
Oven Ready

**STEWING BEEF**  
✓ LEAN  
✓ Boneless CUBES  
None Finer **69**¢ lb

**BONELESS, LEAN TOP SIRLOIN STEAK**  
PERFECTLY AGED FOR TOP FLAVOR

EXTRA TENDER, DELICIOUS AT AN ECONOMY PRICE



**89**¢ lb

WELL TRIMMED, OVEN READY  
**RUMP ROAST** **59**¢ lb

**GROUND ROUND** **59**¢ lb  
GROUND FRESH EVERY 15 MINUTES!

**ROUND STEAK**  
LEAN, WELL TRIMMED  
CENTER CUTS

ONLY AT GOLDEN WEST! **59**¢ lb



EVERY FAMILY'S FAVORITE!

The Home of The Low Price King • The Home of The Low Price King

M  
E  
By  
if yo  
ing yo  
Christ  
Dallas  
a coat  
mere  
year a  
\$280  
cent o  
fur ma  
The  
he tra  
notic  
a fem  
"like  
As a  
be pur  
patter  
dition  
and th  
tation  
blue t  
mink  
light  
check  
ringbo  
The  
town,  
mink  
a rain  
TO  
mand  
22 m  
mals  
for co  
essor  
While  
mal lo  
tender  
they'r  
mink  
have  
of ge  
and d  
midin  
five t  
ran p  
frenzi  
Min  
ed in  
of the  
The  
Wisco  
resol  
for  
Ohio,  
Nu  
Pr  
To  
Be  
1967  
expan  
and  
gram  
tiona  
cord  
dean  
tura  
Ex  
nurs  
the  
20 s  
base  
com  
vaca  
caus  
in th  
tors  
staff  
v  
four  
40  
ave  
in  
said  
St  
45  
rece  
train  
last  
one  
mu  
cath  
intr  
will  
thre  
Mea  
L  
this  
sist  
par  
nex