

Automotive AUTOMOBILES For Sale 190
Automotive AUTOMOBILES For Sale 190
Automotive AUTOMOBILES For Sale 190

The Only Way to Ride at Lower Cost than TOYOTA



- ★ 30 plus miles per gallon
- ★ 0 to 60 in 15.2 seconds
- ★ 90 horsepower engine
- ★ 4 door deluxe sedan including 47 extras at no additional cost
- ★ Reserve power for hills and safe passing
- ★ Cruising speed 70 miles per hour
- ★ Top speed in excess of 90 miles per hour
- ★ Low cost maintenance
- ★ Full year of 12,000 miles warranty
- ★ Coast to coast and border to border service and parts available
- ★ Low cost bank financing
- ★ Compact rate insurance
- ★ Optional automatic transmission
- ★ No increase in price

THE CAR THAT SELLS ITSELF



1967 CORONA FOR ONLY **1760⁰⁰** P.O.E.

QUALITY AT A BARGAIN PRICE IMMEDIATE DELIVERY NOW! WHITTLESEY MOTORS



2955 PACIFIC COAST HIGHWAY TORRANCE Phone 325-7500

How MUCH is MORE?

★ SAVE MORE AND GET MORE

AT TOM ROADY DODGE

COME IN TODAY AND LET US PROVE HOW MUCH IS MORE!

\$95 Plus Tax & License DOWN

DELIVERS ANY NEW DODGE IN STOCK ON APPROVED CREDIT

A Few Demonstrator & Executive Cars Are Still Available at Give-Away Prices

- 1962 CORVAIR Monza 2 door hardtop. Radio and heater, standard transmission. A nice one. Only **\$599**
- 1964 VOLKSWAGEN 2 dr. sedan **\$1099** Look this one over.....
- 1963 CHEVROLET 2 door hardtop. Radio & heater, automatic, power brakes. Real nice. **\$1399**
- 1965 CHEVROLET Malibu 55 coupe. Radio and heater, automatic, power steering. Only 13,000 miles. A real nice one **\$2199** and only.....
- 1963 PLYMOUTH Sport Fury 2 door hardtop. Radio and heater, automatic. Power steering. Drive this one and you will buy it **\$1599** at.....
- 1965 PLYMOUTH Fury III 4-door hardtop. 17,000 miles left on factory warranty. Radio and heater, automatic. Full power, factory air conditioning. A real buy at **\$2399**
- 1961 CHEVROLET Impala convertible. Radio and heater, automatic, power steering. Needs some metal work. Only **\$599**
- 1963 PLYMOUTH Belvedere V-8 station wagon. Radio and heater, automatic, white side walls. **\$999**
- 1963 VALIANT 2 door sedan. Radio and heater, standard transmission. **\$999**

TOM ROADY DODGE
16611 SO. VERMONT, GARDENA
DA 3-9911 FA 1-5511

CARL'S
LOW OVERHEAD GIVES THE BEST DEAL
Chrysler - Plymouth
Valiant - Imperial
1200 NO. AVALON
Wilmington TE 5-3131

JIM KRESL OLDSMOBILE
1550 W. REDONDO BCH. BLVD.
GARDENA 532-5500
USE CLASSIFIED to buy, sell or exchange. Call DA 5-6060 or TE 4-4581.

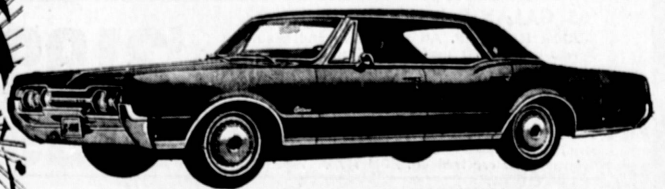
SHOP THE BIG FORD BLOCK
Chas. Soderstrom
Ford
15th & Pacific Ave.
San Pedro TE 2-5315

Automotive AUTOMOBILES For Sale 190
Automotive AUTOMOBILES For Sale 190
Automotive AUTOMOBILES For Sale 190
Automotive AUTOMOBILES For Sale 190
Automotive AUTOMOBILES For Sale 190
Automotive AUTOMOBILES For Sale 190
Automotive AUTOMOBILES For Sale 190

YEAR'S END SALE

Over 150 New and Used Cars and Trucks have been DRASTICALLY REDUCED with Tremendous Savings passed on to you! THE BEST CHOICES — THE BEST GUARANTEES — and the Best Prices make this month-long year-end Sale the BEST AUTOMOTIVE SALE EVER!

EXCITING NEW '67 OLDS F-85



FULLY FACTORY EQUIPPED

NEW '67 OLDS
\$2088
FULL PRICE

★ TRUCK DEPARTMENT ★
BRAND NEW 1967 GMC 1/2 TON PICKUP TRUCK #5141-T
Wide side with overdrive, heater and other factory equipment.
\$2179

- '65 OLDS 98 Convertible. A real honey. Auto., R.H.H., power steering, windows, wipers, seats & antenna, Factory Air. A real puff. #123. **\$2395**
- '65 CHEV. Bel Air Sedan. Auto., power steering & brakes. wsw. #158. A steal at **\$1795**
- '64 PONTIAC Catalina 4-Pass. Station Wagon. Auto., power steering, brakes, Factory Air, power tail gate. #131. **\$2295**

DOWN PAYMENT ? NO PROBLEM !
Payments from \$13.13 on a quality rated used car to \$84.86 per month on a new '67 Toronado includes automatic transmission, power steering and brakes and other factory equipment. Above payments based on 1/3 down, 36 months.

- ★ TRANSPORTATION SPECIALS ★
- '60 CHEV. Parkwood Station Wagon. Radio, heater, automatic transmission, power steering. wsw. #118. **\$595**
 - '60 CHEV. El Camino Pickup. V-8, stick shift, radio & heater. #125. **\$595**
 - '59 MGA Rdstr. Roadster. Radio & heater, 4-speed, wire wheels. Good condition. **\$695**

- USED CAR SPECIALS!
- '62 OLDS 16 Luxury Sedan. Auto., power steering & brakes, power windows & seat, factory air. #1921. **\$1095**
 - '63 CADILLAC Convertible. Full power and Factory Air. wsw. #152. **\$1995**
 - '62 CHEV. Impala Super Sport. 2 Door Hardtop. Auto., R.H.H., power steering and power brakes, wsw. Factory Air. #194. **\$1395**
 - '63 OLDS Dynamic 88. Auto., R.H.H., power steering, power brakes, wsw. 2 tone paint. #128. **\$1195**
 - '63 PONTIAC 4-Door Hardtop. Auto., radio, heater, power steering & brakes, wsw. #154. **\$1295**
 - '63 PONTIAC Catalina Convertible. Auto., R.H.H., power steering and 4 door brakes, wsw. #101. **\$995**
 - '63 BUICK Sport Coupe. Auto., radio, wsw. #104. **\$995**
 - '63 BUICK 4-Door Hardtop. Electric 235. Auto., R.H.H., power steering & brakes, windows and seat. #140. **\$1495**
 - '63 FORD Galaxie 500 XL Convertible. Auto., radio, and heater, power steering & brakes, wsw. #152. **\$1095**
 - '63 OLDS 98 4-Door Hardtop. Auto., R.H.H., power steering and brakes, Factory Air, power seats. #129. **\$1595**
 - '66 PONTIAC 4-Dr. Bonneville Hardtop. Auto., R.H.H., power steering, windows. Factory Air, wsw. #194. **\$3195**
 - '66 RAMBLER Station Wagon. Auto., R.H.H., wsw. luggage rack. #101. **\$1995**
 - '65 FORD Galaxie 500 Convertible. Auto., R.H.H., power steering & brakes, wsw. #151. **\$1495**

MARINA OLDSMOBILE
Even during Sell-Out!
\$295
DELIVERS ANY OLDS (taxes & license)
1030 Pacific Coast Highway HARBOR CITY phone DA 54321

<p>Merchandise For Sale</p> <p>SEWING MACHINES 157 1965 SINGER This lovely almost new sewing machine has the zig zag for over-casting seams, making button holes, sewing designer stitches, etc. Has 15 year guarantee. Just take over payments of \$4.30 Per Mo. or pay off only \$38.88 full cash price to try this Singer in your home, free. Call 534-1460 No Obligation of Course SINGER ZIG ZAG Makes button holes, over-casts, sews on buttons, does dozens of designs without attachments. Original list price \$229 will sell for \$39 TE 0-0352</p> <p>DIAL-A-MATIC SINGER Walnut cabinet. Zig zag, buttonhole, sews on buttons, dec. designs. 7 payment \$5.30 or \$20 cash. 468-774.</p> <p>SINGER SEWING MACHINE Late model, looks like new. \$31.12 cash or terms. Will be for your. Call Credit Mgr. 328-6146.</p> <p>USE CLASSIFIED to buy, sell or exchange. Call DA 5-6060 or TE 4-4581.</p>	<p>Merchandise For Sale</p> <p>MISCELLANEOUS 158 CLEANEST carpet cleaner you ever used. So easy to use. Get Blue Lastra Rent Elec. shampooer 21 Harbor Hdw. Co. 837 Wilmington Bl., Wilm. PA 8-7815</p> <p>TV 23 IN. LESS than 1 yr. old, barbecue, wicker dog bed. Call 834-4951 after 6 p.m.</p> <p>CHRISTMAS doesn't have to be expensive. Learn how at my HANDICRAFT Open House, Dec. 3rd, 10 a.m. to 5 p.m. Craft items for sale. Demonstration, 1064 W. 210th St., Torrance.</p> <p>ENCYCLOPEDIAS Highly rated. Never used. Sacrifice \$25. Ph 883-1232</p> <p>GARAGE SALE Carpets, brooms, furn. Dec. 3rd & 4th, 9:00 to 5:00 17016 Della, Torrance.</p> <p>OIL PAINTINGS 1/2 PRICE 1637 Pac. Ct. Hwy. Harbor City or call 228-5282</p> <p>WHEELCHAIR - (USED) FOLDING - LIKE NEW 116 W. 8th St. PA 8-7815</p> <p>GARAGE SALE! HO scale model railroad cars, locomotives, accessories. Small desk, deep freeze, Etc. Sat. & Sun. 5242 Torrance Blvd., Torrance, opposite civic center.</p> <p>GARAGE SALE: Furniture, baby 1 1/2 yr. old, clothes, Rotisserie 22129 Hasdahl Torr. 830-0038</p> <p>Place your Classified Ad Order before 3 p.m. Tuesdays for Wednesday issues; before 5 p.m. for Sunday issues.</p>	<p>Merchandise For Sale</p> <p>MISCELLANEOUS 158 TRASH CANS Metal: 30 gal. \$1.98 - 40 gal. \$2.50 - 47 gal. \$2.98 - Fiber 31. Fib. OR 1-5270 13101 Yukon Ave., Hawthorne NO SAT. OK SUN.</p> <p>TAKE soil away - the Blue Lastra way from carpets and upholstery. Rent Elec. Shampooer, 81 Handyman's Center 1805 E. Carson, Torrance.</p> <p>HOME BEER BARS Buy direct from factory \$125. Conversion kits \$44.50 3028 W. 129th St. 772-2018</p> <p>MUSICAL Instruments 160 RENT A NEW SPINET FULL CREDIT IF YOU BUY FICHT PIANO CO. 615 S. Gaffey, San Pedro TE 2-6001</p> <p>RICKENBACHER Bass, \$300. Deluxe case, \$35. Also Cleveland Tenor Sax, \$45. Fib. Mark, 371-4735.</p> <p>BICYCLES 161 2 BICYCLES - 1 girl's & 1 boy's \$15 each DA 6-7811</p> <p>TWO 26" Girl's Bicycles. Good condition. \$20 each. 835-3283 after 4 p.m. this no. before 4 p.m. 835-8001</p> <p>SEARS 20" Tricycle. Red & white. Excellent condition. \$12.50. Call 328-6400.</p>	<p>Merchandise For Sale</p> <p>SPORTING GOODS 172 SURFBORD (Jacob), 9 ft., 3 in. \$45. Good condition. Call Mark, 371-4735.</p> <p>PETS, POULTRY Livestock 172 FONIES, PONIES, PONIES All colors & sizes. Ride & drive & equip. \$50 up. Will board \$20 month. PONY RIDER - Cor. of Normandie & Sepulveda, 326-4398</p> <p>POMERANIAN, AKC all ages. pups, studs & matrons. will hold 'til Christmas. TE 4-4763</p> <p>POMERANIAN PUPPIES Papers available, 5 weeks old. TE 0-9242</p> <p>TOY Dachshund, also Chihuahua, AKC stud service. TOY BOARDING. Call 834-8260.</p>	<p>Automotive AUTOMOBILES</p> <p>Wanted 186 ZACHERS AUTO SALVAGE Running or not. Top dollar. DA 6-7718 Bx. 1A 6-1888</p> <p>WE PAY THE MOST WRECKED OR RUNNING. TE 6-1168</p> <p>WE BUY JUNK CARS 1631 E. Sandison Wilmington - 836-2523</p> <p>Trailers For Sale or Trade 188 3 BDRM. Eastern bit. Paconmak. '55, 33x8, \$500. Heavy duty Trlr. hitch. \$100. DA 6-1659.</p> <p>TRUCKS & CAMPERS 189 '56 CHEVY Pickup. Top cond. through 5 ply tires. New paint. Low mileage. PE 7-5343</p> <p>Automotive AUTOMOBILES For Sale 190</p> <p>'62 PONTIAC 6 pass. Sta. Wgn. Air cond. P.S. & P.B. \$900. Call 830-4700 or 530-0366.</p> <p>1962 V.W. Deluxe Bus. Excellent condition. \$750. Call FR 1-7052</p> <p>'58 CHRYSLER R/H Good W/S/W tires. New battery. Excel. trans. \$155. 326-8063.</p> <p>'58 VW BUS, 3 passenger, '62 engine & Trans. Fair cond. \$500. TE 4-5703 after 7 p.m.</p> <p>'60 BUICK V-8 loaded with factory extras. Parts entering. \$1000. Call 830-4441.</p>	<p>'65 Pontiac Bonneville Hardtop Coupe. Full power, new wsw's. Local 1 owner, 20,000 mile car. Just like new! #MPK 532. \$2399 BUTLER BUICK 400 S. SEPULVEDA Manhattan Beach FR 4-8964</p> <p>'65 Buick Electra 225 4-Door Hardtop. Full power, electric windows & seats, factory Air. 12,000 actual miles. This luxurious '65 Electra is just like new - w/Custom Natch Interior. #PCP 036. \$3599 BUTLER BUICK 400 S. SEPULVEDA Manhattan Beach FR 4-8964</p> <p>CHEV '65 Malibu S.S. Auto. Trans. R.H.H. V-8. Good cond. \$280 equity, assume balance. Call 830-4441</p>
--	--	---	---	---	--