

Double Blue Chip Stamps Everyday On Everything You Buy

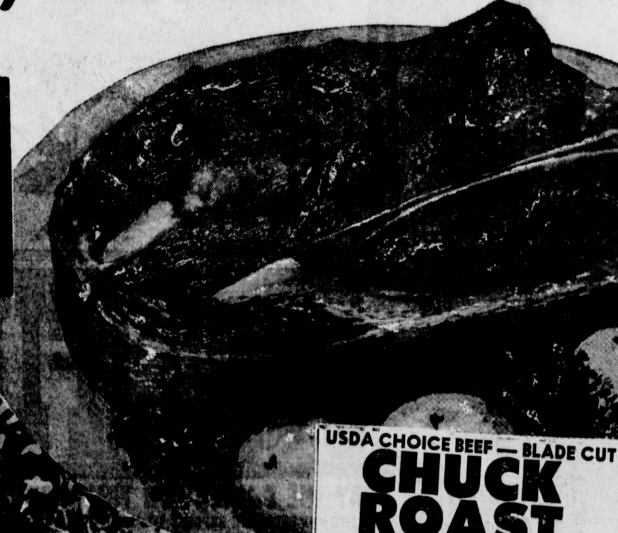
All This Week Foods Co. Brings You **DOUBLE BLUE CHIP STAMPS** ON EVERYTHING YOU BUY Except Milk, Liquor and Tobacco Products



7 BIG SALE DAYS

Thurs. Thru Wed. Nov. 10-16 OPEN VETERANS DAY Friday, Nov. 11 9 A.M. - 10 P.M.

Fall Meat Variety... Chuck Beef Roast, Pork, Liver & Bacon



USDA CHOICE BEEF ROUND BONE **BEEF ROAST** 55^c lb

USDA CHOICE BEEF **CHUCK STEAK** 39^c lb

USDA CHOICE BEEF **7-BONE CHUCK STEAK** 49^c lb

USDA CHOICE BEEF **O-BONE SWISS STEAK** 69^c lb

USDA CHOICE BEEF **BONELESS CHUCK ROAST** 69^c lb

USDA CHOICE BEEF **YANKEE POT ROAST** 49^c lb

USDA CHOICE BEEF **BONELESS SHOULDER CLOD** 79^c lb

LOIN END **PORK ROAST** 59^c lb

SIRLOIN & RIB PORK **CHOPS** 79^c lb

REGULAR OR COUNTRY STYLE **SPARE RIBS** 69^c lb

CENTER CUT LOIN PORK **CHOPS** 89^c lb

POCKET OR WAFER PORK **CHOPS** 98^c lb

RATH **HONEY DAINTEES** 89^c lb



GRAIN FED - EASTERN QUALITY **PORK LOIN ROAST** 49^c LB. 3 TO 4 POUND AVERAGE

USDA CHOICE BEEF - BLADE CUT **CHUCK ROAST** 35^c LB. CENTER CUT 7-BONE ROAST 45^c lb

USDA CHOICE • BONELESS **BEEF STEW** 75^c lb
USDA CHOICE **SPENCER STEAK** \$1.69 lb
USDA CHOICE **NEW YORK RIB STEAK** \$1.79 lb
USDA CHOICE • BONELESS **RIB STEAK** 98^c lb
USDA CHOICE • FIRST CUT **CLUB STEAK** \$1.07 lb

SEAFOOD SPECIALS

CENTER CUT ALASKA **HALIBUT STEAKS** 79^c lb
FILLET OF PACIFIC **WHITE FISH** 59^c lb

FIRST QUALITY **RATH BACON** 1 LB. PKG. 69^c

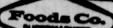
HORMEL Range-2 lb. pkg. **SLICED BACON** \$1.27 Cure #81 Boneless **HAMS** \$1.49 LB.

NUTRITIOUS **FRESH BEEF LIVER** 49^c LB. FRESH CALVES LIVER 79^c lb



KOLD KIST **STEAKS 10 for \$1.00**

fresh produce



BANANAS

CHIQUITA

CENTRAL AMERICAN

GOLDEN RIPE

219^c LBS

LARGE CLUSTERS RED EMPEROR **GRAPES** 10^c lb

LARGE RIPE **FUERTE AVOCADOS** 19^c ea

NEW CROP **NUTS**

- CHESTNUTS
- LARGE HILBERTS
- EUREKA WALNUTS
- LARGE BRAZIL NUTS
- PEARLES ALMONDS
- YOUR CHOICE

39^c lb

THICK MEAT YELLOW **BANANA SQUASH** 5^c lb

delicatessen



RATH • KING SIZE **WIENERS**

59^c

ALL MEAT 1 LB. PKG.

SLICED **AMERICAN CHEESE** Individually Wrapped Slices 12-OZ. PKGS. 59^c

FARMER JOHN

FARMER JOHN SLICED COOKED

HAM

5 OZ. PKG. 49^c

VIENNA SLICED 4 OZ. PKG. 49^c

PASTRAMI

CORNER BEEF OR TONGUE 59^c

CRACKER BARREL CHEESE

Mellow . . . 8-oz. wedge—57c, 10-oz. stick—67c
Sharp . . . 8-oz. wedge—63c, 10-oz. stick—77c
Extra sharp . . . 8-oz. wedge—67c, 10-oz. stick—83c

\$25,000 WEEKLY SWEEPSTAKES

TURN THE PAGE FOR THIRD WEEK'S WINNERS!