

SINCE 1930

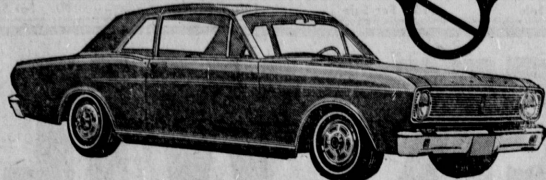


NOT A "6"—BUT A BIG V-8 NEW '66 MUSTANG HARDTOP
 • Equipped with • cruiseomatic transmission • tinted windshield • smog devices • wsw tires • padded dash & visors • heater • back-up lights • windshield washers • emergency flashers • outside rear view mirror and much more factory equipment. #6R07C236187.

PICK A PAIR SALE

\$2585

Plus Tax and License Del. in Wilm.



SINCE 1930



BRAND NEW 1966 FALCON 2 DOOR CLUB COUPE

Big "6" engine, cruiseomatic trans., deluxe radio, tinted windshield, E.E.C. and C.E.P., padded dash & visors, back-up lights, outside rear view mirror, emergency flashers, seat belts, front and rear, windshield washers. Motor No. 6K01T22M665. Delivered in Wilm. plus tax and license.

\$2185
 Sale Priced at Only



Here's A Pair To Draw To...

FORD'S ZESTY "MUSTANG" COUPLED WITH THE ECONOMY CHAMP - FALCON... EITHER WAY, YOU'LL BE SURE TO HAVE A WINNER. SHOP US NOW AND SAVE!

'64 PLYMOUTH		A1 USED CARS		1964 MODEL SALE		USED CARS A1		'64 CHEV. IMPALA H.T.	
Fury 2 Dr. H.T. 383 cu. in., 4 speed transmission, R&H. A-1 condition.	\$1999	'64 FORD F100 PICKUP	\$1599	'64 LINCOLN CONTINENTAL	\$3699	'64 FALCON 2-DR. SEDAN	\$1399	R&H, auto., p.s., white with black interior. A-1 condition. FMH 891.	\$1899
'64 CHEVY VAN	\$1399	R&H, auto. trans., V-8 engine, custom cab. A-1 condition.		Full power, factory air, new engine, new tires. A-1 warranty. RBT 182.		A-1 warranty. OTN 683		'64 GALAXIE 500 2-DR. H.T.	\$1899
R&H, auto. trans., new point, new tires. A-1 warranty.		'64 FORD SPRINT	\$1899	'64 FORD TOWN SEDAN	\$1399	'64 GALAXIE XL 2 DR. H.T.	\$1999	2 Dr. H.T. R&H, auto., p.s., factory air. Like new condition. KIZ 143.	
		R&H, auto., p.s., bucket seats, V-8 engine, new tires. A-1 condition.		R&H, auto. trans., 289 cu. in. engine. A-1 warranty. Stock #T910.		R&H, auto. trans., power steer., beautiful yellow with black interior. A-1 warranty.			

KOTT & SMOLAR

336 W. ANAHEIM, WILMINGTON

IN WILMINGTON



NEW CAR DEPARTMENT & SERVICE — TE 5-6621

USED CAR DEPARTMENT — TE 5-6624

SINCE 1930

AUTOMOBILES For Sale 190 AUTOMOBILES For Sale 190 AUTOMOBILES For Sale 190 AUTOMOBILES For Sale 190 AUTOMOBILES For Sale 190 AUTOMOBILES For Sale 190 AUTOMOBILES For Sale 190 AUTOMOBILES For Sale 190

MARINA OLDS

YEAR END SALE

'66 OLDSMOBILE CLEARANCE! SAVE! SAVE! SAVE!
 THIS IS THE TIME OF THE YEAR FOR THE BUYING PUBLIC TO MAKE SPECTACULAR NEW OLDSMOBILE BUYS... WE HAVE MOST ALL MODELS & COLORS... DISCOUNTED TO THE BARE BONE!

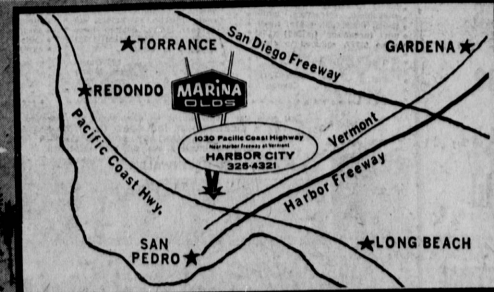
★ ★ ★ ★ Used Car Clearance Sale ★ ★ ★ ★

'66 PLYMOUTH Auto, R&H, power steering, wsw tires. Factory air. #1341. \$2595	'65 FORD MUSTANG R&H, wsw. A real nice car. Modestly priced #1394. \$1695	'66 G.M.C. 1/2 TON 3-speed, 8' Wide Side. Low mileage. This is a Marina Olds Co. Vehicle. \$1995	'65 OLDSMOBILE '98" HOLIDAY SEDAN Automatic, radio, heater, power steering, brakes, windows and seat. #1170. \$2895	'65 OLDSMOBILE CELEBRITY SEDAN Automatic, radio, heater, power steering and brakes. #1148. \$2395	'64 OLDSMOBILE CUTLASS COUPE R&H, power steering, wsw tires. #1221. \$1595	'64 FORD SEDAN R&H, wsw tires. A real nice car bargain priced this week only. \$1095
'64 BUICK SKYLARK VISTA DOME STATION WAGON Factory air, auto, R&H, power steering, brakes, windows, & seats. #1312. \$2395	'64 OLDSMOBILE JETSTAR I COUPE R&H, auto. trans., power steering & brakes, wsw tires. #1132. \$1995	'64 PONTIAC "G.T.O." Hardtop. Radio, heater, 4-speed. #1333. \$2095	'64 OLDSMOBILE F-85 4-DOOR SEDAN Automatic transmission, radio, heater, whitewalls. #1080. \$1395	'64 CHEVROLET GREENBRIAR STATION WAGON 3 seat, 9-passenger. #1314 \$1195	'62 THUNDERBIRD Automatic transmission, radio, heater, power steering & brakes. Factory air and power windows. #1223. \$1695	'62 CHEVROLET 1/2 TON PICKUP V-8, automatic transmission, heater. #1091. \$1095

OPEN Sundays and nightly 'til 10 p.m. !!



Even during Sell-Out!
\$295
 low as
 DRIVERS ANY OLDS (plus tax & license)



1030 Pacific Coast Highway HARBOR CITY phone DA 54321 SP 56611