

# unimart

California's Largest Quality Discount Department Store

## SHOP WHERE QUALITY'S YOURS AT LOWER PRICES

## WE GUARANTEE OUR SELECTION BEST ON EVERY ITEM, EVERY DAY!

### MEN'S SHORT SLEEVE KNIT SHIRTS

• Crew necks, "V" necks and Turtle necks, 3/2 zipper Johnny collars • California styled, multi-color stripes • Sizes S-M-L-XL

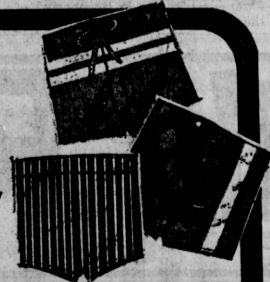
**97¢**  
3.99 VALUE!



### MEN'S AND YOUNG MEN'S SWIM TRUNK CLEARANCE

• Boxers, competition stripes, surfers, lewis, tees & jans • White, toden, tan, red and maize • Sizes S-M-L-XL

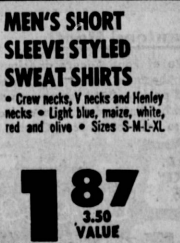
**1.87**  
2.99 to 3.99 VALUE



### MEN'S SHORT SLEEVE STYLED SWEAT SHIRTS

• Crew necks, V necks and Henley collars • Light blue, maize, white, red and olive • Sizes S-M-L-XL

**1.87**  
3.50 VALUE



### MEN'S ORLON ALPACA KNIT CARDIGAN

• Popular alpaca knit cardigan • Fully cut, 100% virgin Orlon acrylic • 6 button cardigan bell sleeves • Sizes S-M-L-XL

**6.60**  
9.90 VALUE



### MISSIE'S DENIM JAMAICA OR SURFER SHORTS

• Stitched in white to contrast on navy denim & faded blue • Sizes S-16

**1.00**  
4.00 & 5.00 VALUE



### WOMEN'S NYLON TRICOT HALF SLIPS

• Attractively trimmed nylon tricot half slips • White & pastel • Sizes S-M-L

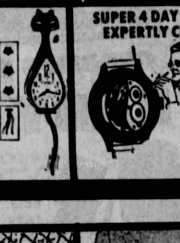
**83¢**  
2.00 to 3.00 VALUE



### WHAT'S NEW? THE PUSSY CAT WALL CLOCK!

• Cat's face and clock mechanism • Full size moves back & forth • Ideal for children's rooms, dorm or family room • 20" high, 5" wide

**5.93**  
9.95 VALUE



### SUPER 4 DAY SPECIAL - WATCHES EXPERTLY CLEANED & REPAIRED

• Complete cleaning and adjusting of your watch • Electrically timed • Guaranteed for 1 year • Automatics, calendars, electric, alarm, timers, chronographs - slightly higher

**3.19**  
7.50 VALUE



### DELUXE CHAISE LOUNGE WITH VINYL CHAISE PAD

• Vinyl covered chaise pad in decorative floral pattern • Lightweight and sturdy aluminum chair frame • Adjustable casters

**8.88**  
13.99 VALUE



### COMPLETE DELUXE 5 PC. CAMPING OUTFIT

• Consists of 2 sleeping bags, one 2-man tent, two 5-tube air mattresses • Water repellent rugged sail twill • Full set in floor • Enclosed front • Full size 36" x 82" x 3" thermal acrylic fiber sleeping bags, poplin cover • Flannel lining • 108" weather zipper

**19.67**  
45.50 VALUE



### BIG BOY DELUXE BARBECUE WITH WARMING OVEN

• Extra large 2 ft. wide grill • Deep fire box for better fires • Full wood hood with warming oven • Large wheels • Temperature control

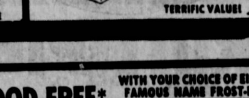
**15.77**  
24.95 VALUE



### BIG BOY HOODED BBQ, SPIT FORK & MOTOR

• Large 22 inch diameter grill • Wrap around wind hood • Spit forks and motor included

**7.66**  
9.99 VALUE



### 6 FT. REDWOOD TABLE WITH 2 BENCHES

• Fine quality redwood from 2 inch thick stock • Large enough to serve the whole family • Includes 2 full size benches

**14.77**  
29.75 VALUE



### YOUR CHOICE! FRESH WATER REELS

• Terrific savings on fresh water reels • Built cast, open face spinning reel or spin cast reel

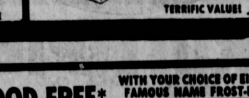
**1.47**  
4.45 VALUE



### SAVE OVER 1/2! COMPACT CAST IRON HIBACHI

• 10 inch wide grill • 3/4 vented body & fire pan • Cool wood handles

**1.99**  
4.99 VALUE



### BOYS' "HI-RISER" HANDLEBAR BIKE

• Hi-riser handlebar • 3-bar cantilever frame • Slick or knobby tire in rear • Heavy forks

**28.89**  
34.95 VALUE



### COLEMAN COOLER

• Positive lock lid • Insulated with urethane foam • New Universal tray supports allow tray placement anywhere and to end • X-large drain empties water fast • Rust proof base

**9.67**  
17.95 VALUE



### FULL SUN SHRUBS!

• Sun azaleas • Dwarf hibiscus • Evergreen Texas privet • Tropical philodendron • 3 inch pot size • Perfect for mass planting

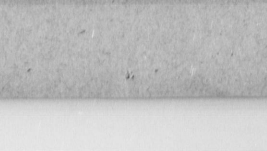
**37¢**  
TERRIFIC VALUE



### PINCOR 18" POWER REEL MOWER

• Full 18 inch wide cut • Self propelled • Special low cutting feature • Safe chain cover • Terrific value

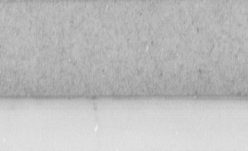
**56.95**  
69.95 VALUE



### COLEMAN 1 GALLON JUG

• Four quart convenience • Unbreakable Snap-Lite liner is chip-proof, acid-proof, odor free • Inner lid is drinking cup with handle • Rust & corrosion proof base • Lifetime insulation

**3.27**  
4.95 VALUE



### BON-AIRE PORTABLE POLORAIR CAR COOLER

• For the car or home • Ideal for car because of its lightweight and indestructible plastic

**25.83**  
TERRIFIC VALUE!



### DELUXE QUILTED BEDSPREADS

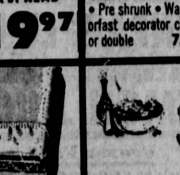
• Popular three style spread • Beautiful all over quilting • Green, blue, pink, turquoise and maize • Cord welting

**12.97**  
29.99 VALUE... 10.97 TWIN OR FULL SIZE, 15.99 VALUE...

### "FRENCH LACE" VINYL TABLECLOTH

• White and red • 54" x 72", 60" x 84", 60" x 72" round, 72" x 104", 60" x 84" square or oval, 78" x 104", 60" x 84" square, 116" x 104" square

**2.77**  
4.99 VALUE

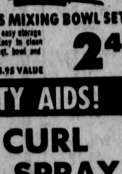


### 19" HAND WIRED PORTABLE TV

• WE BROADCAST OUT MANUFACTURER DISTRIBUTOR FOR BIGGEST TV EVENT!

• Powerful hand wired chassis • Extra components permit perfect factory alignment • Automatic gain vs frequency control circuits • Front speaker, heavy cabinet in Ebony & Havanese tan • 14" beam optional

**88.88**  
199.95 VALUE



### FAMOUS MAKE 12 IN. UHF VHF PORTABLE TV

• Here's a buy you won't want to pass up • Savings you never dreamed possible on this terrific 12 inch portable TV • All 82 channels, UHF-VHF TV • Save over \$35.

**64.88**  
109.95 VALUE



### FAMOUS NAME FAMILY SIZE 9 CU. FT. REFRIG-FREEZER

• Holds frozen foods at safe sub-freezing temperature • Freshener drawer • Slide out crisper • Multi-magnet door seal • Full 1 yr. in the home service, 5 year on compressor

**119.88**  
169.95 VALUE

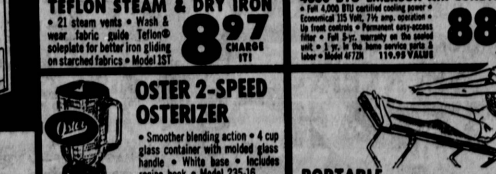


### \$40 WORTH OF FOOD FREE\*

WITH YOUR CHOICE OF EITHER FAMOUS NAME FROST-FREE REFRIGERATOR-FREEZER

WITH FREE DELIVERY, INSTALLATION AND 1 YEAR IN THE HOME SERVICE!

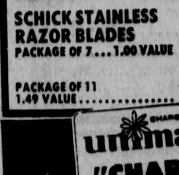
**31818** \$40 FOOD CERTIFICATE GOOD AT ANY UNIMART FOOD DEPT.  
**29888** 445.00 VALUE



### HAND GUIDED DECORATOR SPREAD

• Polyester and linen • Some reversible • From famous 5th Avenue manufacturer, entire stock brought out to bring you these savings • 140" x 90" VALUE

**19.97**  
35.99 to 49.99 VALUE



### FAMOUS NAME WOVEN SPREADS

• Pre shrunk • Washable • Colorfast decorator colors • Twin or double

**4.97**  
7.97 VALUE



### ST. MARY'S ELECTRIC BLANKET SHEETS

• New high lift 100% acrylic design • High fashion colors • All nylon backing • 72" x 84" • The both back or full back • Lead 2" to a customer

**5.97**  
10.99 VALUE



### 3 PC. STAINLESS MIXING BOWL SET

• Double neck in each mixer for easy stirring • "The Stir" pouring spout • Easy to clean • Includes 2 1/2 qt. bowl, 1 1/2 qt. bowl and 3 qt. bowl

**2.49**  
4.95 VALUE



### SAVE ON HEALTH & BEAUTY AIDS!

#### SCHICK INJECTOR RAZOR

1.50 VALUE... **99¢**

#### SCHICK STAINLESS RAZOR BLADES

PACKAGE OF 7... **78¢**

PACKAGE OF 11... **99¢**

#### SHO CURL HAIR SPRAY

Regular or hard to hold 17 oz. jumbo can. **63¢**

1.25 VALUE

#### NORGE FULL FAMILY SIZE WASHER, SAVE \$50

• 4 wash & rinse water temperatures • 5 fresh water rinses • Super spin dry • Built in sediment remover • Automatic acids control • Model AWF 3010.

**148.88**  
199.95 VALUE



#### RCA WHIRLPOOL AUTOMATIC WASHER

• 2 speed, 3 cycle • 3 water temperature with 2 water levels • New cold water wash cycle • Surligator agitator • Porcelain outside • Tube • Mod. LMA-5560

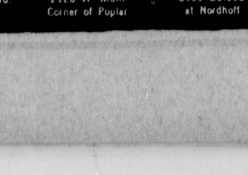
**188.88**  
239.95 VALUE



#### PRESTO TEFLON STEAM & DRY IRON

• 21 steam vents • Wash & wear fabric guide • Teflon soleplate for better iron gliding on starched fabrics • Model JST

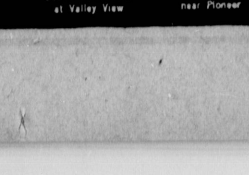
**8.97**  
CHARGE 171



#### OSTER 2-SPEED OSTERIZER

• Smoother blending action • 4 cup glass container with molded glass handle • White base • Includes recipe book • Model 235-16.

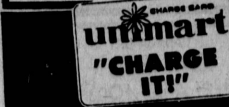
**17.97**  
CHARGE 171



#### PORTABLE EXERCISE SLANT BOARD

• Rugged all wood reinforced frame construction • Covered in heavy gauge vinyl over a thick pad • Metal support bars.

**9.87**  
16.95 VALUE



SHOP MONDAY THRU FRIDAY 12 to 9 PM - SAT. & SUN. 10 to 7 PM

BURBANK  
2311 Hollywood Way  
at Van Owen

POMONA  
2301 W. Valley Blvd  
1 1/2 W of S. Points

CULVER CITY  
10270 Jefferson  
Near Sepulveda

MANHATTAN BEACH  
1200 N. Sepulveda Blvd  
at Manhattan Beach Blvd

LONG BEACH  
2120 W. Main  
Corner of Poplar

ALHAMBRA  
2120 W. Main  
Corner of Poplar

NORTHIDGE  
8999 Balboa  
at Northhoff

LA MIRADA  
14200 Rosecrans  
at Valley View

NORWALK  
11600 Alondra  
near Pioneer