

## Torrance Unit Ready for Camp

There may be a bit of anxiety going through the minds of the men of E Company, 132nd Engineer Battalion, 40th Armored Division, California National Guard.

The men, whose home army is at 2505 Cabrillo Ave. here, are confronted with a challenge.

The challenge takes the form of two weeks of rigid training in San Luis Obispo as a part of the Guard's annual summer camp program held to keep the men in constant readiness should crisis develop.

E COMPANY, commanded by Lt. Delmer Losson of Manhattan Beach, will be just one of five companies from the 132nd participating in the drill. And the 132nd is likewise one of many units from throughout California undertaking the encampment.

## Army Unit Begins New Training

The 6218th Reception Station of the Army Reserve, headquartered in Torrance, is now at Camp Roberts, Calif., for a two-week encampment.

The local reserve unit is one of several now at Camp Roberts to assist the 104th Division in the training of Army Reserve recruits who have never been on active duty.

Films for an Army television show, "The Big Picture," are being shown this week at Camp Roberts.

although the men did return to camp following the riots. At San Luis Obispo, the men will take part in many essential and specialized operations, including a bivouac and live weapons firing training, plus their regular duties and assignments.

**THE PROGRAM** is climaxed roughly 15 days after its start by a special dress review. The men are due home Aug. 27.

This year's group may be one of the largest in several years because of increased enlistments, the result of the Viet Nam buildup. The officers, however, are prepared to handle the young recruits.

The drill is one of the primary parts of the National Guard's overall program to insure combat readiness for the men.

The 132nd Engineers also has line companies in Manhattan Beach, Lynwood, Burbank, and Ontario. The company commander is Lt. Col. William L. Geissert, a Torrance resident.

## VFW Post Dinner Set

The Lomita Post of the Veterans of Foreign Wars will sponsor a dinner Saturday, Aug. 6, at the Post Hall, 24425 Alliene St., Lomita. Dinner will be served from 6:30 until 9 p.m.

The menu will feature mixed fruit juice, tuna a la king, hot biscuits or chicken a la king, biscuits, butter, jellied tomato salad, ice cream, and coffee, milk or tea.

Tickets are \$1.25 for adults and 75 cents for children under 12 years of age.

# Heart Risks Rise With Blood Pressure

By EUGENE TEMKIN, M.D., President, County Heart Association

Going up? Your blood pressure, that is.

It could be creeping up quietly, without your being aware of it unless you have been recently examined by a doctor.

This is definitely not a case of "what you don't know won't hurt you," the Los Angeles County Heart Association warns. Not only can high blood pressure do serious damage to blood vessels, and heart and kidneys, but it also considerably increases the patient's risk of developing heart disorders.

A SCANT 15 years ago, there was relatively little physicians could do to modify the course of high blood pressure. Since that time modern medicine has achieved one of its most dramatic successes. The story can be told in statistics. Between 1950 and 1962, the death rate from high blood pressure dropped 52 per cent among middle-aged American men and women in the 45-64 age group.

While doctors were making these impressive inroads on the toll in human lives, scientists exploring the natural history of coronary heart disorders made a disquieting discovery, indicating high blood pressure on a new count.

Among the more than 5,000 persons participating in a Framingham, Mass., study during the past 15 years, those with blood pressure even slightly above the normal range were found to be running significantly more than the usual risk of having a heart attack for their age group. After 10 years those

with high pressure had an incidence of coronary disorder four times that of subjects with normal blood pressure. And when high blood pressure was found in combination with obesity, high blood cholesterol, or diabetes, the risk was multiplied enormously.

**THE FINDINGS** of the Framingham study have urgent significance for the estimated 7 million Americans with high blood pressure but who do not have a heart disorder. (In another 10 million persons heart disorders linked to high blood pressure have already appeared.) Because high blood pressure can encroach and ad-

vance without producing any warning symptoms, the importance of regular physical examinations cannot be stressed too often. Regular physical examination will bring high blood pressure to light.

In the majority of cases—those persons with "essential" hypertension, meaning that no specific cause can be identified—early treatment

can be instituted to reverse the course of the disease before serious damage has been done.

**NEW PRESSURE**-lowering drugs are only a part—albeit the major part—of an attack on hypertension. Other measures to control blood pressure include:

- Reduction of excess weight, since overweight ag-

gravates the condition and the risk of heart attack.

- Cessation of cigarette smoking, because smoking just one or two cigarettes brings an immediate rise in blood pressure. Smoking also is an added coronary risk factor.

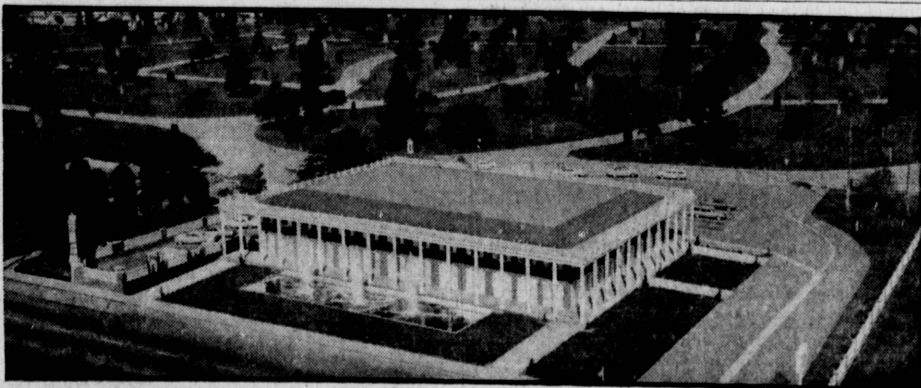
- In some cases, reduction of salt intake in the diet, if the doctor prescribes it.

You and your doctor can work together now to control your blood pressure and reduce your risk of having a heart attack. Meanwhile, scientists all over the world are working to discover and eliminate the underlying cause of all cardiovascular disorders. Until they do, the Los Angeles County Heart Association urges, give yourself a head start in heading off heart attacks.

## ENTERS HOSPITAL

Linda J. Wood, 15-year-old daughter of Mr. and Mrs. Billy Wood of 21317 Lynton Ave., has been admitted as a patient at Orthopaedic Hospital in Los Angeles.

FOR A RESULT GETTING CLASSIFIED CALL DA 5-6060



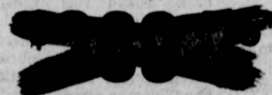
THIS IS THE ONLY MORTUARY WITHIN INGLEWOOD PARK CEMETERY  
**INGLEWOOD CEMETERY-MORTUARY**  
Everything in Beautiful, Convenient Cemetery Grounds

**Dodge**

# CLEAN-UP SALE!

GET THE YEAR-END BARGAIN PRICES EVERYONE'S BEEN WAITING FOR IN LOS ANGELES & ORANGE COUNTY!

## CORONET



America's Show-Plus-Go Car—now available at an unbelievable Clean-Up Sale Price PLUS X-TRA VALUE!



## DART

Family favorite for economy, comfort, beauty—with an X-TRA VALUE pricetag that's slashed to the bone!



## MONACO

Big-car luxury and power available in all body styles—and it's yours at an incredible X-TRA VALUE Clean-Up Sale Price!



## CHARGER

Passenger/Performance Car of the year—the looks, the power, the room you want, all at a low, low price PLUS X-TRA VALUE!

SAVE AT "THE DEPENDABLE MAN"—YOUR LOS ANGELES & ORANGE COUNTY DODGE DEALER NOW!

## SUBURBAN DODGE, INC.

445 East Anaheim St.

Wilmington

TE 0-0562

## TOM ROADY, INC.

16611 South Vermont Ave.

Gardena

DA 3-9911

Direct from **DELCO carpet mills**  
**SUMMER SALE**  
4 ROOMS OF BROADLOOM CARPET

Your choice of:  
**DUPONT or CAPROLAN**

The finest quality carpeting available... stain resistant, long-wearing, decorator colors! One low price includes 32 sq. yds. expertly installed with heavy foam padding... PLUS DELCO'S famous

**10-YEAR WEAR GUARANTEE**

COMPLETELY INSTALLED FROM WALL-TO-WALL OVER HEAVY FOAM PAD

**\$159**  
Reg. \$238



**SHOP-AT-HOME FREE!**

**500 BLUE CHIP STAMPS** with your free home estimate—absolutely no obligation to buy!  
**1,000 BLUE CHIP STAMPS** with every installation

**4 DAYS ONLY! CALL NOW COLLECT**

for your free home estimate  
**735-5181**

**EASY TERMS**  
NO MONEY DOWN  
NO PAYMENT 'TIL SEPT.  
TAKE 36 MOS. TO PAY

**3 ROOMS OF CUSTOM-TAILED DRAPERIES** COMPLETELY INSTALLED

with decorator Heavy-Duty track Includes 28 ft. custom-tailored draperies, double fullness installed from floor to ceiling. Other fabrics proportionately reduced.

- Expert Installation
- Finest Workmanship
- Large Choice of Fabrics and Colors

**\$159**  
Reg. \$238

**DELCO carpet mills**

**LOS ANGELES**  
3823 W. Jefferson  
Just So. of Santa Monica  
Freeway  
1/2 blk. W. of Crenshaw  
735-5181

**SAN FERN. VLY.**  
18421 Ventura Blvd.  
Tarzana  
1/2 blk. E. of Reseda Bl.  
2 blks. E. of Ventura Hwy.  
881-3610

**SO. BAY AREA**  
2300 W. Pacific  
Coast Hwy., Lomita  
1 mi. W. of Harbor Pkwy.  
DA 5-9622

**ORANGE COUNTY**  
2442 W. Orangeflora  
Fullerton  
Intersection of Riverside  
& Santa Ana Hwy.  
714-879-1100

**SAN GABRIEL VLY.**  
705 E. Garvey Ave.  
Montebello  
off San Bernardino Hwy.  
between New & Garfield  
AT 8-4940

**COMPTON**  
720 S. Long Beach Bl.  
1/2 blk. off Alondra  
639-0804

**CARPETS REMNANTS AND ROLL-ENDS**

**50% OFF**

OPEN MONDAY thru FRIDAY 10-8, SAT. 10-6, SUN. 11-6

Put a Dodge in your Garage!

**HERE'S HOW DODGE'S 5-YEAR, 50,000-MILE ENGINE AND DRIVE TRAIN WARRANTY PROTECTS YOU:** Chrysler Corporation confidently warrants all of the following vital parts of its 1966 cars for 5 years or 50,000 miles, whichever comes first: engine, transmission, drive shaft, rear axle, front and rear suspension, steering knuckle, water pump, fan belt, alternator, generator, and all other parts of the engine and drive train. This warranty is in addition to the 3-year, 50,000-mile warranty on the body and chassis. It is a limited warranty and does not cover wear and tear, or damage caused by misuse, neglect, or accidents. It is not a guarantee of performance. For complete details, see your Dodge dealer or write to Chrysler Corporation, 300 North Dearborn, Detroit, Mich. 48201.