

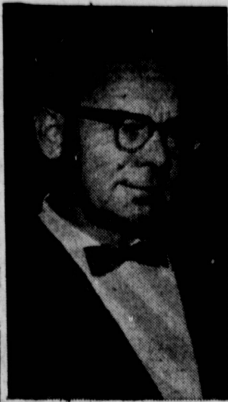
**GOOD
LUCK**

Ted Green
CHEVROLET

on the
**GRAND
OPENING**
of your
Beautiful New Dealership

**ANY-CAR
AUTO WRECKING**

14700 S. MAIN
GARDENA • FA 1-0956
Late Model Chevy & Ford Parts



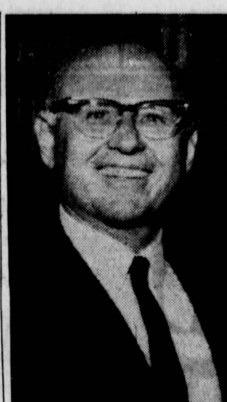
NORM ROBINSON
Service Manager



HARRY J. BOSTWICK
Lease and Fleet Manager



SYLVAN PENN
Body Shop Manager



BOB ULRICH
Parts Manager

CLASSIFIED

A 5-6040

BEST OF LUCK

Ted Green Chevrolet

In your beautiful new building.
May you enjoy continued success.

RUSS THOR, Inc.

Authorized Volkswagen Dealer
20410 Hawthorne Blvd.
TORRANCE • 370-5771

Congratulations

**TED GREEN
CHEVROLET**

Best wishes for continued
growth in your new location

McConnell

Advertising Specialties
1108 AVALON BLVD.
WILMINGTON 835-2292

GOOD LUCK

Ted Green Chevrolet

Such a beautiful dealership
can only bring continued
success and the future
brighter than ever

PAUL IRVINE'S ALIGNMENT

"MR. FRAME"
24906 S. NORMANDIE
HARBOR CITY DA 6-6611

CONGRATULATIONS
on the
GRAND OPENING
OF

Ted Green Chevrolet

**WALTERIA RADIATOR
SERVICE**

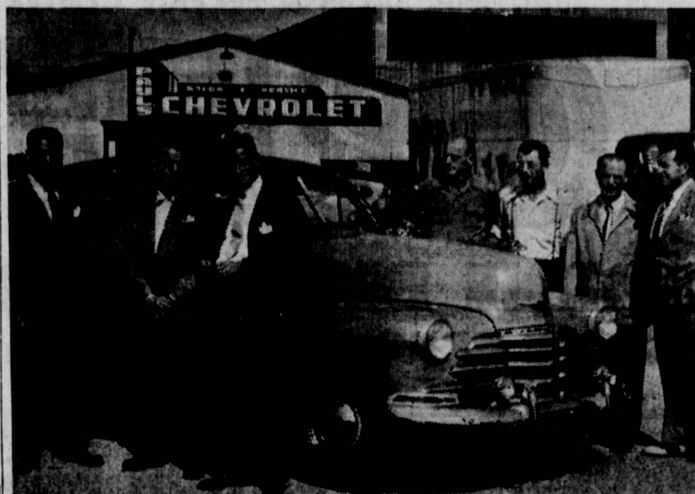
"RADIO DISPATCHED TRUCKS"
20639 HAWTHORNE BLVD.
TORRANCE • 371-3000

Congratulations

and
BEST WISHES
TO

Ted Green Chevrolet
SAMSON AUTO SALVAGE

8103 S. ALAMEDA LOS ANGELES



IT ALL STARTED HERE... Opening of the new Paul's Chevrolet in downtown Torrance in 1948 was heralded by General Motors and city officials in 1947 as founder Paul Loranger (top photo, right foreground) opened for business in a tin shed at 1640 Cabrillo Ave. Construction of the modern shop and service areas was the first major expansion of the firm which followed soon after the opening (center). The modern showroom which has served the firm until this week was opened as the last major addition to the downtown location. Now Ted Green's Chevrolet, the firm this week occupied its 5-acre site at 23505 Hawthorne Blvd.

Bob Ulrich

Keeping parts on hand to meet the needs of all customers at Ted Green Chevrolet will be the responsibility of Bob Ulrich, a veteran of 15 years service with the local Chevrolet dealership.

Ulrich, a veteran of the Navy who served during World War II in the South Pacific, began his career in the automobile business in 1946. For 13 years he has been a parts manager.

A baseball fan par excel-

lence, Ulrich joined Paul's Chevrolet in 1951. He became parts manager in 1953. Throughout his career, he has been associated with Chevrolet dealers.

More than 13,000 square feet of space will be devoted to parts store in the new facility, Ulrich said. Ulrich is married and has one son.

**SINCERE
BEST WISHES
TO**

Ted Green Chevrolet
on your
Grand Opening
and continued success

BOLT PRODUCTS, INC.

635 TOWNE AVENUE
LOS ANGELES MA 7-8194

They Head Departments

Norm Robinson

Service is his business, and Norm Robinson is looking forward to expanded quarters at 23505 Hawthorne Blvd.

Robinson, a graduate of Kansas State College, came to California in 1936 and began a career with Chevrolet which has lasted for the 32 of the 34 years he has been in the automobile service business.

He joined Paul's Chevrolet as service manager in February, 1961, and continued as service manager when the agency became Ted Green Chevrolet, Inc. And it isn't the first time he's worked under a Green—Robinson was employed by Ted Green's father, Harry, as a serviceman for some 19 years.

A past president of the LOSAR Service Managers Club, Robinson is married and the father of three children.

The new service facilities, he notes, are designed for increased efficiency and will help Ted Green Chevrolet continue a tradition of fine service for all customers.

Harry Bostwick

Operation of the leasing and fleet division of Ted Green Chevrolet will be the responsibility of Harry J. Bostwick, a veteran of some six years at the local agency.

Bostwick, 30, a graduate of Santa Monica City College and UCLA, joined Paul's Chevrolet in 1960 as a sales representative. He was named lease and fleet manager in 1965.

A veteran of the Army, he served in an artillery unit during the Korean War. Bostwick is a member of the Phi Kappa Sigma Alumnae Association.

the Southern California Auto Dealers Lease Managers Association, and a five-year member of the Chevrolet Legion of Leaders honorary association. He also belongs to the Hall of Fame of the Truck Sales Honorary Association.

Married, he is the father of two children. Hobbies include fishing and sailing.

Sylvan Penn

Sylvan Penn, manager of the body shop at Ted Green Chevrolet, began working in automobile body shops at the age of 14 and, except for two years in the U. S. Navy, has never worked anywhere else.

Penn, who came to California in 1947, is a native of Baltimore, Md., and a graduate of Forest Park High School there. He entered the Navy in 1943 and served in the Sea Bees Naval construction unit.

He became manager of a body shop in Baltimore when he was 20. He is married and has four children. When he's not working, he enjoys drafting and bowling.

New body shop facilities at Ted Green Chevrolet are more compact and permit more efficient work, Penn said. "Our new body shop boasts a new spray booth offering better quality work," he added. Low turnover among his personnel also was cited by Penn, who believes that quality workmanship encourages repeat customers.

THE FIRST CHEVROLET

Louis Chevrolet, colorful race driver, and a group of men started working in a loft above a small Detroit shop began assembling the first Chevrolet automobile in March, 1911. Chevrolet had designed and tested the engine at the urging of W. C. Durant.

BEST OF LUCK

TO

Ted Green Chevrolet

May your Grand Opening
and all the days to follow be a
GREAT SUCCESS

SCHIMMICK BROS.

AUTO SALVAGE

22704 S. Normandie
Torrance 328-7513 775-1331

**BEST
WISHES
TO**

*Ted Green
CHEVROLET*

on the
**GRAND
OPENING**

Of your outstanding
new dealership

**BANNER
AUTO
SALVAGE**

1230 Alameda
Wilmington
TE 4-6403

WISHING

Ted Green Chevrolet

CONTINUED SUCCESS

You will certainly continue
to grow in your beautiful
new headquarters

TORRANCE TOW SERVICE

1828 W. 213th STREET
TORRANCE 371-2500

GOOD LUCK

and
**CONTINUED SUCCESS
TO**

**TED GREEN CHEVROLET
IDEAL GLASS**

20631 Hawthorne Blvd.
TORRANCE • 371-2464

Congratulations

and Sincere

**BEST WISHES
TO**

Ted Green Chevrolet

May you obtain every goal you have
set forth in your beautiful new home.

Press-Herald