



OPENING TODAY . . . "Hawaiian Paradise," a new Elvis Presley movie, opens in theatres throughout the Southland today for a summer run. Parts of the new motion picture were filmed late last summer at Torrance Municipal Airport. Presley (facing the camera) is pictured during a break in the filming. Other stars featured in the picture include James Shigeta (center, back to camera), Susan Leigh, and Donna Butterworth. (Press-Herald Photo by Hal Fisher)

... Budget

(Continued from Page 1) will be set by the council during a meeting in late August, will be about \$12,180 per \$100 assessed valuation.

IN OTHER action, the council:
• Approved a recommendation by Arthur Horkay, city

traffic engineer, that Ocean Avenue be designated a through street between Pacific Coast Highway and Sepulveda Boulevard. Councilmen ordered four-way stop signs installed at the Lomita Boulevard and at 230th Street intersections if a four-way stop is needed at that location.
• Postponed until July 12

consideration of a report on the feasibility of the city purchasing the Torrance properties of Dominguez Water Co. and the California Water Service Co.
• Granted an off-street parking variance to the First Baptist Church of Torrance. The variance permits parking in an R-a zone at 1720 and 1724 Manuel Avenue.

City Council Sets Special Meet Tonight

Torrance Councilmen will convene this evening at 7 o'clock to hear an appeal regarding an entertainment permit for a bar and to continue work on last night's long agenda.

The meeting had been scheduled to hear the appeal of a bar owner who was denied an entertainment permit by the city's License Review Board, but additional matters were added to the agenda when the clock moved past the midnight hour last night. Chief item on the agenda is an appeal from Don Bartelme, owner of The Bounty Room at 4419 Torrance Blvd. Bartelme was denied an entertainment permit May 18.

The council will meet at 6:45 p.m. as the city's Redevelopment Agency to hear a report from its Finance Committee. The committee, however, has scheduled a session at 6 p.m. to discuss ways of financing the city's share of the proposed Meadow Park Urban Renewal project.

Torrance Pastor Named to Board

The Rev. Clifford L. Tierney, pastor of the South Bay Church of God, has been elected to a five-year term as a member of the Board of Church Extension and Home Missions of The Church of God.

The Rev. Tierney was elected to the post during the church's 77th annual convention.

... Hospital

(Continued from Page 1) factors, flight patterns, and related matters which make the airport incompatible with such developments. Why is this different?" he asked.

Other councilmen were quick to agree with Lyman. But, asked Mayor Albert Isen, "How can we deny the hospital 10 free acres?"

Airport Manager Jack Egan told the council the medical complex presented a "new set of facts" and added, "I'm not being inconsistent." Egan

said construction plans and the nature of the facility being contemplated makes the development compatible with the airport.

DURING A discussion of alternatives open to the council, backers of the huge complex agreed to pay the fees for an acoustical consultant to advise the council. Dellgercio also said no "satellite" buildings would be built until the hospital is assured.

The rezoning is subject to a precise plan of develop-

JUNE 29, 1966

PRESS-HERALD A-3

ment, which permits the council to retain some controls over the placement, design, and general configuration of the facility.

Ensminger in comments about the proposed hospital, said it was a "very monumental program" and would provide Torrance with "one of the finest medical centers in the United States." He also told the council the complex would create jobs for some 4,000 persons when completed.

Councilmen voted unanimously in favor of the rezoning with Lyman casting a "very, very reluctant yes." Ted Olson said he "walked in opposed to this," but added he had been convinced the complex would be "a real addition to the community."

FOR A RESULT GETTING CLASSIFIED AD CALL DA 5-6060

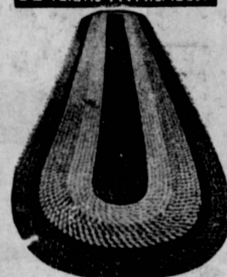
NADER'S CORNER

THE BEST THINGS IN LIFE ARE STILL FREE, BUT THE TAX EXPERTS ARE WORKING OVERTIME ON THE PROBLEM!



CHUCK NADER
That's Me; I'm He

APARTMENT OWNERS! YOU ARE INVITED TO VISIT NADER'S NEW AND USED CONTRACT DEPT. E-Z TERMS AVAILABLE.



BRAIDED RUG
DECORATOR COLORS TO CHOOSE
19⁸⁸



5-PC. MAPLE DINETTE
Round Nevamar Table with 12" Fill and 4 Upholstered Chairs.
\$69⁸⁸



5 PIECE DINETTE SET
4 padded Chairs, Extension Leaf Table 30x40 plus 10" leaf
\$34⁸⁸



Hotpoint REFRIGERATOR
Copper-tone or White
\$129⁸⁸

RICH SALEM DISTRESSED TABLES

that Blends with CONTEMPORARY MODERN EARLY AMERICAN. RECTANGULAR COCKTAIL TABLE 24"x48" 14" HIGH. STEP END TABLE 18"x14" Top, 30"x18" Bottom 21" High.



\$16⁸⁸



GAS RANGE
With 4 burners, oven, and separate broiler. White porcelain finish. Guaranteed rebuilt.
\$69⁸⁸



30 GALLON HOT WATER HEATER
Fully Guaranteed Rebuilt
\$24⁸⁸

WAREHOUSE CLEARANCE

we've added DISCOUNTS to our DISCOUNTS

NADER'S SPECIAL OF THE WEEK

All Foam Corner Group

... a fabulous teaming every smart decorator looks for. Each unit is foam-filled; constructed with heavy gauge springs for firm support... your choice in decorator fabric of green, blue, red or gold. Walnut finished trims; hardwood back rails for bolsters.



Sleeps 2! Seats 5!

Overall left sofa: 98 1/2" Overall right sofa: 72 1/2" Overall length - 14 feet
OPEN A NADER'S CHARGE ACCOUNT! NO MONEY DOWN
CLOSED JULY 4TH

OVER 1000 RCA COLOR TV'S BELOW DISCOUNT!

"The Largest Selection in the South Bay"



MATTRESS AND BOX SPRINGS
FULL SIZE \$9.88 MORE
29⁸⁸



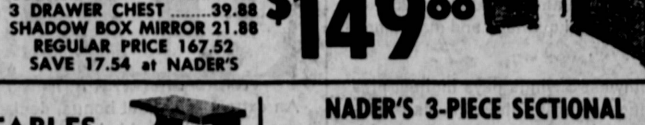
KING SIZE MATTRESS AND BOX SPRING
Luxury Sleeping For Many Years Guaranteed at NADER'S
89⁸⁸



STEEL BED FRAME
adjust from 36x54
\$5⁸⁸



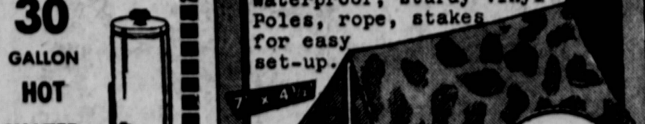
SLIM-FOLD BED
for den or cottage. Steel and aluminum. Foam mattress.
\$14⁸⁸



4 PIECE CORNER UNIT
MADE OF SOLID MAPLE
\$149⁸⁸



DOUBLE DRESSER69.88
CORNER DESK39.88
3 DRAWER CHEST39.88
SHADOW BOX MIRROR 21.88
REGULAR PRICE 167.52
SAVE 17.54 at NADER'S



NADER'S 3-PIECE SECTIONAL
Smart nylon tweed fabric. Curve. No Money Down. Choice of Decorator Colors - a Nader Super Value! E-Z TERMS OF COURSE
139⁸⁸



Jumbo ARMY COMBAT PUP TENT
Waterproof, sturdy vinyl Poles, rope, stakes for easy set-up.
\$100^{PH}

EXPIRES JULY 3, 1966

TORRANCE 166 E. CARSON 1/2 Block East of Main TE 4-7979

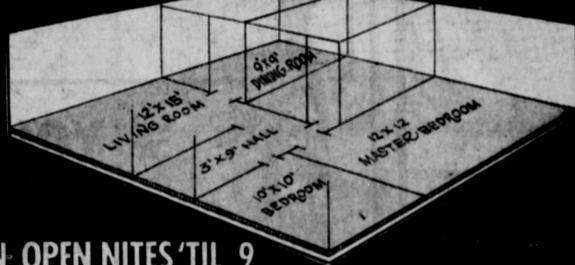
OTHER LOCATIONS
★ GARDENA
★ SAN PEDRO
★ REDONDO

Artistic Carpets THE NATION'S FASTEST GROWING CARPET STORES

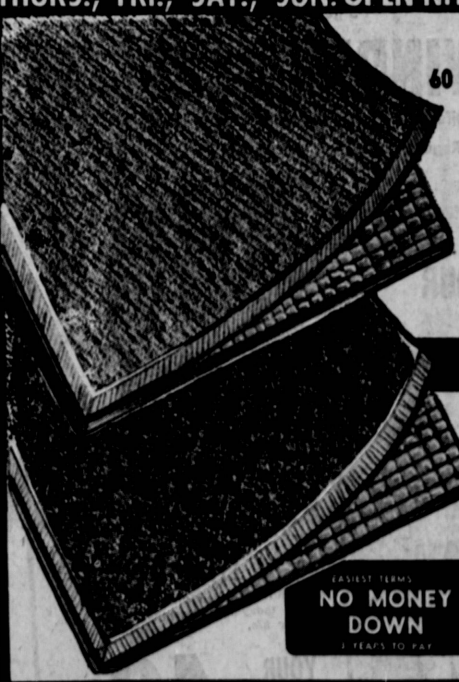
YOUR ENTIRE HOME CARPETED WALL to WALL

With 100% Continuous Filament Nylon..

Yes, Artistic Carpet can bring you these LOW, LOW Prices, because of our 3-store buying power... our buyer just returned from an East Coast buying tour, where he was able to buy hundreds of rolls of carpet at Mill Prices. These tremendous savings are being passed on to you.



4 DAYS ONLY
THURS., FRI., SAT., SUN. OPEN NITES 'TIL 9



100% CONTINUOUS FILAMENT
60 SQ. YDS. COMPLETELY INSTALLED

NOW ONLY \$289

5-YEAR WEAR GUARANTEE
PRICE INCLUDES:
* Heavy 50 oz. rubberized pad * Tax, No money down * All doors moved * All wiring and tubes * We take up old carpet (if any) no charge

OPEN DAILY 9-9 SAT. 9-6 SUN. 10-5

DU PONT '501' NYLON

60 Sq. Yds. Completely Installed NOW ONLY..

\$359

7-YEAR WEAR GUARANTEE
PRICE INCLUDES:
* Heavy 50 oz. rubberized pad * Tax, No money down * All doors moved * All wiring and tubes * We take up old carpet (if any) no charge

ARTISTIC CARPETS

20352 HAWTHORNE BLVD., TORRANCE

CALL TODAY FR.0-4371
OPEN DAILY 9 TO 9 • SATURDAY 9 TO 6 SUNDAY 10 TO 5

WE BRING OUR STORE TO YOUR HOME



YOU SAVE MORE AT Artistic Carpets PRO-4371
Shop in your own home. See the actual carpet matched with your furniture and interior decorative scheme. CALL TODAY - NO OBLIGATION. Our decorator will gladly call at your convenience and he'll bring hundreds of samples and help you with your carpet problems.