



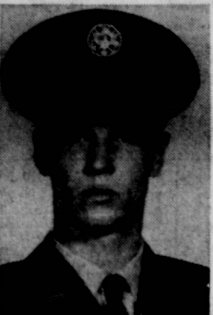
KERRY D. WILLIAMS
Airman Kerry D. Williams, son of Mr. and Mrs. Don M. Hartel of 22646 Ladeene Ave., has been assigned to Shaw AFB, S.C., after completing Air Force basic training. A 1965 graduate of South High School, he will be trained on the job as a fuel specialist with the Tactical Air Command.



DAVID DOUGHERTY
Airman David A. Dougherty, son of Mrs. Barbara J. Romero of 600 Via Monte de Oro, has been assigned to Blytheville AFB, Ark., after completing Air Force basic training. A 1964 graduate of South High School, he will be trained on the job as an administrative specialist with the Strategic Air Command. His father, Edward A. Dougherty, resides in Huntington Beach.



MICHAEL ANDRUSCHAK
Airman Michael Andruschak, son of Mrs. Edna B. Andruschak of 1625 W. 218th St., has been selected for technical training at Keesler AFB, Miss., as a U.S. Air Force communications-electronics specialist. He completed basic training at Lackland AFB, Tex.



THOMAS MCCUTCHEON
Airman Thomas A. McCutcheon, son of Mrs. Andrew V. Pantaleon of 348 Paseo de la Playa, has been assigned to Carswell AFB, Tex., after completing Air Force basic training. A 1965 graduate of South High School, he will be trained as a fuel specialist. He attended El Camino College.

BANDS MARCH

The combined Torrance Area Youth Bands were featured Sunday in an afternoon performance at Disneyland. The Junior and Senior Bands, under the direction of Jim Davidson and Bob Jones, were invited to Disneyland after finishing in the finals of the Shrine Auditorium Band Festival.

Elections, Reapportionment Put Legislators Behind Eight-Ball

By CHARLES E. CHAPEL
Assemblyman, 46th District

When the Legislature returned from the election-week recess on Monday, June 13, that was the one hundred twenty-fourth legislative day. This year the Legislature has been in continuous session longer than it has been in any year for more than seventy years. Actually, since 1966 is an even-numbered year this is a "budget year", and as such we were supposed, in theory, to complete our work in 30 days.

There are several reasons

Lecture on 'Christian Science' Set

Christian Science churches will present a Bible lesson on the broad and specific meanings of the term "Christian Science" at their services Sunday.

Included will be one of the many parables which Christ Jesus used to describe the coming of his kingdom: "The kingdom of heaven is like unto leaven, which a woman took, and hid in three measures of meal, till the whole was leavened" (Matthew). Along with it, will be read these lines from the denominational textbook: "Ages pass, but this leaven of Truth is ever at work. It must destroy the entire mass of error, and so be eternally glorified in man's spiritual freedom" ("Science and Health with Key to the Scriptures" by Mary Baker Eddy).

DISEASES NOTED

Reported cases of notifiable diseases in the Torrance area for the week ending June 4 included nine cases of gonorrhea, and two of epilepsy. Two cases each of hepatitis and salmonellosis were noted and one case each of mumps, scarlet fever, and syphilis.

for the prolonged session. First, the United States Supreme Court ordered us to re-apportion the State Senate. Second, the California State Supreme Court ordered us to re-apportion the Assembly. Both of these orders were obeyed in 1965, but this gave rise to more problems. 1966 is an election year. All Constitutional officers (Governor, Lieutenant Governor, etc.), all Members of the Assembly and all State Senators must run for re-election. Many members of both houses of the Legislature simply went home to campaign, thus making it difficult for those who stayed on the job in Sacramento to keep the shop open. On some days there have not been enough members on the floor of either house to transact business.

FOR EXAMPLE, when a bill does not include an appropriation, it requires 41 votes to pass it from the Assembly to the Senate, and 21 votes are required in the Senate to pass a bill to the Governor. A bill in the Assembly with either an appropriation written into it, or a bill containing an implied appropriation, requires 54 votes for passage to the Senate, and it requires 27 votes (2/3 of 40) for the Senate to pass the bill to the Governor.

My decision to stay on the job in Sacramento meant that I had very few opportunities to return to the 46th Assembly District for campaigning. I do not regret my decision and mention this merely as one example of the many problems confronting the Legislature this year.

THERE HAS been a vast amount of publicity, rumor mongering and ordinary gossip about the idea that the members of the Legislature are about to receive some fantastically large salary. Several thousand men and women apparently believed these rumors because there was a vast army of candidates running for seats in the Assembly and the Senate and they were all on the ballot at

the Primary Election on Tuesday, June 7.

This created business for the paper industry: printers; Foster & Kleiser; Pacific Outdoor Advertising Co.; the display advertising departments of all newspapers; and other worthy free-enterprise corporations. Curiously enough, the general public was very apathetic (indifferent) until election day and then voters went to the polls to express themselves.

THERE IS A very real tax revolt in California. Here is one example—in Sacramento County the voters elected a lady osteopath, Dr. Irene Hickman, as County Tax Assessor of Sacramento County. The incumbent Tax Assessor of Sacramento County is honest and able but all the publicity about dishonest county tax assessors apparently operated as a back-lash in Sacramento County.

Fortunately for Los Angeles County, our County Tax Assessor, Phil Watson, is a bright shining light among the tax assessors of California. He received a well-de-

served vote at the Primary Election.

I have been a member of the Assembly Committee on Revenue and Taxation continuously since I first took the path of office on the first Monday of January, 1951. In addition, I am a member of our sub-committee on assessment practices which goes into the activities of county tax assessors and other taxing officials at all levels.

THIS IS MY sixteenth year in office. I have never voted to impose a new tax on the people of California and I have never voted to increase an existing tax, hence I do not fear the tax revolt. I, myself, was part of the tax revolt before the phrase "tax revolt" was coined by some hard working newspaper reporter. I am still part of the revolution against increased taxes because the power to tax is the power to destroy.

Increased taxes on the State level can be avoided by spending less money on boondoggle projects. One example is the expenditure of money by the State of California for

the purpose of inducing people to come to California. People do not have to be invited to come to California. They come of their own volition, on foot, by Greyhound bus, by airline, by truck, and by pack mule. They come by the thousands every day of the year. Therefore, I am proud that I have always voted against bills appropriating money to persuade people to come to California.

FOR LEASE

10,000 Sq. Ft.

COMMERCIAL BUILDING

SUITABLE FOR BUSINESS AND/OR LIGHT MANUFACTURING

Ideal downtown Torrance location.

Former Torrance Herald Office

at 1615-19 Gramercy.

Attractive terms.

PHONE 325-6060

OR CALL YOUR LOCAL BROKER

HERE'S PROOF!

PRESS-HERALD, PRESS-JOURNAL & HARBOR MAIL

GET RESULTS!



el's FORD
June 2, 1966

Mr. Jay Delaney
Classified Advertising Manager
Torrance Press Herald
3238 W. Sepulveda Blvd.
Torrance, California

Dear Jay:

This is the first time I have ever felt called upon to volunteer a testimonial letter to any advertising medium, but the extended good business relations enjoyed by Vel's Ford with the Torrance Press Herald make such a letter a pleasure to write.

As you are very aware, Vel's Ford has advertised its merchandise and services with a weekly full page advertisement in the Torrance Press Herald since March of 1965.

I can say without reservation that this long term association has not only been a very pleasant one but also extremely profitable. Over this period of years our business - - - selling new Fords...Value Sealed Used Cars...and Ford Quality Car Care - - - has steadily increased.

Thus far in 1966 every month from January until the present has been a record month for us in both sales and service surpassing every year to date figure of the past.

Our method of sourcing our business tells us without doubt that much of the good fortune we enjoy is a direct result of our advertising program with you at the Press Herald. We deeply appreciate your fine personal counsel through the years and thank you for introducing us to so many good Torrance residents who have since become our lasting customers.

Very truly yours,

Al Ryfle

Al Ryfle, Genl. Sales Mgr.
Vel's Ford Sales Co.

20900 Hawthorne Boulevard • Torrance, California • 370-3636

ADVERTISE WITH THE LEADER!

PUT YOUR ADVERTISING DOLLAR WHERE IT WILL PAY OFF

FOR RESULTS! - FOR PROFIT!

ADVERTISE IN THE

Press-Herald

Guaranteed audited coverage of Torrance, Lomita, El Nido, Riviera, North Redondo, and L.A. County Strip areas.

3238 W. SEPULVEDA BLVD., TORRANCE, CA 5-6060

Press-Journal & Harbor Mail

Guaranteed audited coverage of Wilmington, Dominguez, Carson, Harbor City, and North San Pedro Hill areas.

23922 S. AVALON BLVD., WILMINGTON, TE 4-4581

... WHICH PRODUCT? WHICH BRAND?



SAVE TIME & MONEY
WHEN YOU READ
And SHOP The ...
**MARY WISE
FOOD PAGES**

Now reaching 1,400,000 homes throughout Los Angeles County these exciting food pages are featured in 60 Southland newspapers. They offer the homemaker mouthwatering menu suggestions, recipes, household hints and product information every week.

A special monthly recipe contest is also featured on these pages ... There's no obligation to enter, just send in your special recipe and you may win a cash award.

Let Mary Wise help you plan that next meal ... your family will appreciate it!

Press-Herald

MARY WISE Menu Planners