

You Bet Your Life



The Travelers Safety Service

Reckless driving caused more than 713,000 casualties in 1965.

Volvo Torrance Facility Opens

Volvo marked its tenth anniversary in the United States here last night with the opening of a new \$1,500,000 West Coast headquarters building at 190th Street and the Western Avenue freeway ramp.

In a speech during the building dedication, Svante Simonsson, Volvo executive vice president, said the Swedish government refused to grant the firm an export loan ten years ago.

"It was said in Sweden then," Simonsson reported, "that it was just impossible to export cars to the United States — the cradle of the automobile industry and the world's toughest market."

Today, he said, the United States is the largest of the firm's 130 export markets.

During the decade the firm has sold its vehicles in the United States, it has spent

more than 150 million dollars to buy American-made equipment and parts for its products, and to operate the 17 factories in controls in Sweden.

Volvo's new investment on the West Coast is evidence of the company's long range determination to strengthen its position in the United States market, Simonsson said. The new Torrance plant replaces a smaller one in Sherman Oaks, and will service the 10 western states.

Teachers Get First Chance In Torrance

Torrance teachers with an eye on an administrative career have picked the right district in which to carve their niche, according to a report released this week.

Promotions to administrative and staff positions in Torrance Unified School District are filled by Torrance teachers who come up through the ranks in more than eight out of nine cases, according to Dr. Robert Morton, assistant superintendent of personnel.

Out of 83 current administrative positions, the assistant superintendent stated, 71 of the incumbents were former Torrance classroom teachers who were promoted.

Included in this total are 31 of the 34 elementary school principals, all ten of the elementary school vice principals, three of the four high school principals, 11 of the 12 secondary assistant principals, nine of the 12 consultants, eight of the nine staff assistants, and both directors.

Of 36 staff positions, which include counselors, curriculum coordinators and student activity advisors, 35 are one-time Torrance teachers.

Name New Manager For Shell Refinery

A. S. Lehmann, a Shell Oil Company employee for the past 21 years, has been named manager of Shell's Wilmington-Dominguez refinery.

He succeeds E. A. Ballman, who will become manager of the company's refinery at Wood River, Ill.

Lehmann joined Shell in 1945 as a chemist for Shell Development Company at Emeryville, Calif., although by then he had already worked two summers as a roustabout at Long Beach for the company.

In 1952, he became a manufacturing technical repre-

sentative in New York and a year later became technical assistant to the president of Shell Development.

Lehmann transferred in 1954 to the Wood River refinery where he held various assignments. In 1962 he became the refinery's process superintendent, and, in 1963, the chief technologist. He has been the refinery superintendent at Shell's Houston refinery since 1964.

Lehmann received a bachelor's degree in chemistry from Stanford University in 1938 and a doctor's degree in chemistry in 1941 from Brown University.

More People in Torrance
Read the Press-Herald Than
Any Other Newspaper!



Magic Chef Bakery

Special occasion? Let Magic Chef prepare and decorate a beautiful cake that will taste just as luscious as it looks! Call —371-2715.



RICH & NUTTY
**CASHEW-DATE
COFFEE CAKE**

59¢ reg. 69¢

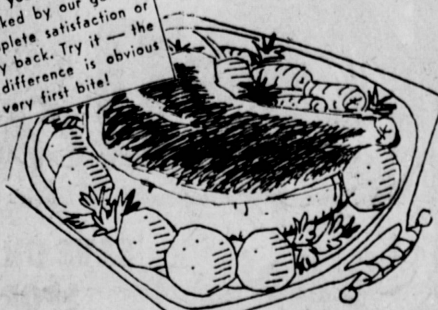
1-LB. LOAF
**DUTCH CRUNCH
BREAD**

31¢ reg. 39¢

BLUEBERRY, CHERRY or PINEAPPLE
**BOSTON
CREAM PIE**

99¢ reg. 1.19

All the meat you buy at Magic Chef is backed by our guarantee of complete satisfaction or your money back. Try it — the delicious difference is obvious from the very first bite!



U.S.D.A. "CHOICE" BEEF
**STANDING
RIB ROAST**

large end **69¢** lb.

SMALL END .98¢ lb.

U.S.D.A. "Choice". Smother it in tomato sauce, add corn on the cob and watch it disappear! **69¢** lb.

U.S.D.A. "Choice". Shoulder clod. You'll love this cut! Juicy and loaded with flavor! **89¢** lb.

It's the fryin'-est! Try a rasher with a bowl of fresh peaches and cream! Sliced. 1 lb. pkg. **77¢**

Range Style. Real open country flavor! It couldn't taste better on the open plains! 2 lb. pkg. **\$1.57**

Real McCoy. Try a picnic supper right in the dining room. Cryovac Wrapped. **79¢**

U.S.D.A. "CHOICE" BEEF

**CLUB
STEAK**

also:
top round
sirloin tip
family steak **98¢** lb.



U.S.D.A. GRADE 'A'

**FRESH
DUCKLING**

Poppy Brand **49¢** lb.

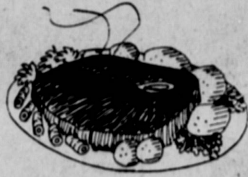
Real McCoy. Something to tempt the most particular of appetites! Try it and you'll see! **79¢** lb.

Real McCoy! Here's something else for those fussy appetites! Tasty in so many different recipes! **65¢** lb.

U.S.D.A. "CHOICE" BEEF

**CHUCK
ROAST**

center cut **45¢** lb.



U.S.D.A. "CHOICE" BEEF

**CHUCK
STEAK**

seven bone **49¢** lb.

Real McCoy. There's nothing like it! Something really unique for everyone!

SLICED BEEF BACON 12 oz. pkg. **69¢**

Alternate this treat with your beef bacon! You'll have 'em raving for days! 1 lb. roll **49¢**

REAL MCCOY BEEF SAUSAGE

Gourmet Sea Food

Fresh—Northern. Extra "coldwater" flavor.

Whitefish Fillet 69¢ lb.

Frozen. Crisp and flavor-packed! Bulk pkg. **49¢** lb.

Breaded Fish Sticks

Frozen. Quick, easy and so good!

Gorton's Fish Cakes 3 pkgs. 99¢

They're delightful and different! 8 oz. pkg. **59¢**

Gorton's Fish Puffs 1 lb. roll **69¢**

Frozen—tender. The fish delish! **Eastern Scallops**

EASY SPREADING
**MAGIC CHEF
MARGARINE**

1 lb. cartons **25¢** save 15¢

GOLDEN CREME
**CATERING
ICE CREAM**

1/2 gallon **69¢** everyday low price

ing good and save some money too! Tall can
Hot Dog Food 4 for 29¢

eat for quick treats or anytime! 21 oz. can
Pork & Beans 19¢

like royalty while viewing the early show!
Dinners reg. pkg. 39¢

and still stay slim and trim! 303 can
Fruit Cocktail 19¢

THE RIPENED, THICK MEAT
**LARGE SIZE
MONTALOUPE**

6 for \$1



EAR
**THE
JUICY
NECTARINES**

10¢ lb.

MASS VARIETY BUTTER RIPE LARGE
AVOCADOS
2 for 25¢

DEL AMO
SHOPPING
CENTER
CORNER OF
HAWTHORNE &
SEPULVEDA

**MAGIC
CHEF**



we welcome
FOOD STAMP
SHOPPERS