



Magic Chef Bakery

Special occasion? Let Magic Chef prepare and decorate a beautiful cake that will taste just as luscious as it looks! Call —371-2715.



7-IN. SQUARE REG. 79c
COCOANUT CAKE
69c each

BIG 1 1/2 LB. LOAF
POTATO BREAD
reg. 41c **33c** loaf

A NEW IDEA IN BREAKFAST TREATS!
GERMAN CHOCOLATE COFFEE CAKE
reg. 69c **59c** each

SIMPLE SIMON
CREAM PIES
25c save 8c
Lemon, Coconut, Raspberry

GERBER
STRAINED BABY FOOD
3 4 1/2 oz. jars **29c**

fresh—keep plenty on hand for treats. Pkg. of 8
m Cups **10c**
orted colors, or decorated borders. Jumbo roll
per Towels **29c**
d creamy or crisp whole kernel corn, also, 303 can
style Corn **5 for \$1**
anuts, with a surprise in every box. 3-pack
Jacks **3 for 27c**

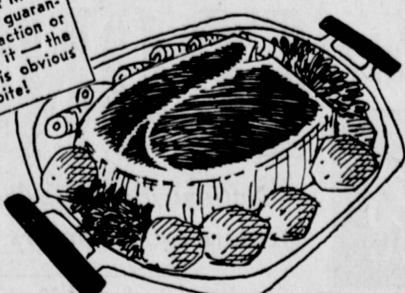
CRISP, SOLID
HEAD LETTUCE
2 large heads 25c

JUICY
ETANGES
10c lb.

LONG GREEN
FRESH CUCUMBERS
10c

CALIFORNIA GROWN
FRESH DATES
4 12 oz. pkg.s \$1

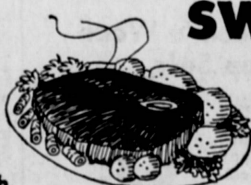
All the meat you buy at Magic Chef is backed by our guarantee of complete satisfaction or your money back. Try it—the delicious difference is obvious from the very first bite!



U.S.D.A. "CHOICE" BEEF
CHUCK ROAST
blade cut **33c** lb.

Completely boned, trimmed of excess fat, cured and slow-cooked to soak up natural juices.
WILSON FESTIVAL HAMS **\$1.39** lb.
Vacuum-packed to hold the delicious sugar cured flavor right to the very last slice. 1 lb. pkg.
OSCAR MEYER SLICED BACON **98c**
Start your day with sizzle—choose appetizing little pork sausages for breakfast. 1 lb. pkg.
OSCAR MEYER LINK SAUSAGE **89c**
Cryovac Wrap. Made from tender, lean beef brisket, seasoned with flavorful flair!
PATMAN'S CORNED ROUND **89c** lb.
Plain or breaded. A shortcut to interesting main dishes with a Continental air. Frozen.
TUREK & MECK VEAL CUTLETS **89c** lb.

FARMER JOHN OR LUER
COOKED HAMS
full shank half **49c** lb.
BUTT PORTION 59c lb.
CENTER HAM SLICES 98c lb.



U.S.D.A. "CHOICE" BEEF
O-BONE SWISS STEAK
69c lb.

Sugar-cured, hickory smoked bacon from Luer Iowa Farms. 1 lb. pkg.
WILSON CORN KING BACON **77c**
Skinless links put extra protein in your breakfast menu—good for quick suppers, too, 8 oz. pkg.
LUER SKINLESS LINK SAUSAGE **3 for 99c**

U.S.D.A. "CHOICE" BEEF
7 BONE ROAST
49c lb.



U.S.D.A. "CHOICE" BEEF
BONELESS FAMILY STEAK
89c lb.

Gourmet Sea Food

Frozen. Flaky, delicious, and fast! 8 oz. pkg. Fresh fish just hours from the Pacific Ocean.
4 Fisherman Fish Sticks **39c** **True Cod Fillets** **69c** lb.
Frozen. Delicate and delicious. 14 oz. pkg. Put this Monterey specialty on your menu.
4 Fisherman Fish Krisps **69c** **Rock Cod Fillets** **65c** lb.

COME ONE... COME ALL... the Community Pancake Breakfast at Magic Chef Market on Saturday, May 14th, 8 'til 11 A.M. All proceeds will contribute to the support of the Torrance Youth Band.

DEL AMO SHOPPING CENTER
CORNER OF HAWTHORNE & SEPULVEDA

MAGIC CHEF

Board President Claims

School District Needs 50 Classrooms Yearly

Fifty new classrooms a year are needed to house the growing student population in Torrance, according to William Hanson, president of the Board of Education. "Each year 1,200 to 1,500 new youngsters move into Torrance," Hanson said at a meeting of the Board of Education Monday evening. "If we are to educate these youngsters, we must either build new classrooms or get double-duty out of the classrooms we already have by going on split sessions."

Torrance voters will have an opportunity to decide the future of classroom housing at the June 7 primary election. At that time there will be a proposition on the ballot, proposition FF, which would provide \$9 million for building classrooms. A two-thirds majority vote is needed to carry the measure. "Bonding is the best way the state provides for school boards to finance buildings," Hanson said. "It is less expensive than pay-as-you-go financing because all the new people

that come into a community contribute to the cost of buildings as they use them. "Because Torrance is presently bonded to its legal capacity, passage of the bonds will not increase the tax rate but would result in taxes continuing at their present level," he stated.

Bereskin To Travel In Italy

Pompeii—the ancient Roman city preserved by lava for more than 700 years, the place where Caesar was burned, and the Roman Senate will be seen by Latin students at North High School next year. Students will visit historic places through slides which Louis Bereskin, a North High teacher, plans to take this summer.

Bereskin has been awarded a Fulbright grant for a two-month Italian Classics seminar at the American Academy in Rome. He is one of 20 teachers of Latin and Greek selected from throughout the United States for the seminar.

At the conclusion of the seminar, Bereskin will spend two weeks traveling in France.

During the seminar, the North High teacher will live in Rome and make daily visits to nearby monuments and museums. Weekly trips will take him outside Rome to such places as Florence, Naples, and other sites. The class will spend two weeks in Naples, where students will visit the ruins of Pompeii and other ancient cities.

While in Rome, Bereskin will study archeology, topography, history, literature, and the life of ancient Rome. He will have to write a report and take a final examination, receiving six hours of graduate credit upon completion of the course.

"The main reason I applied for the Fulbright grant," he explained, "was to take slides for use in the classroom. Part of our Latin course is Roman history. With the slides, Latin students can see the places about which they read."

FREE!
Domino Gift Certificate
worth 100 coupons
plus beautiful Gift Catalog!

Please send this certificate and mailing label to:
Name _____
Address _____
City _____
State _____ Zip _____
Send to: DOMINO, P. O. Box 200
Richmond, Virginia 23208
(Limited to persons 21 years or older)

Gift Coupon on Every Pack
Save up to 25c per carton



PLANTIN TIME!
1c SALE!
Liquid Fertilizer
Ortho-Gro
Reg. \$4.98 ea. • 1 Gal.
2 FOR 4.99
Bandini Plush
Reg. \$4.98 ea. • 1 Gal.
2 FOR 4.96

Excellent for Trees - Shrubs & Grass
Dichondra - Flowers
ROSES IN FULL BLOOM
Bush - Climber - Tree

TROPICAL BOWL NURSERY
2457 LOMITA BLVD.
(One Block East of Crenshaw)
DA 6-7130 • LOMITA
OPEN EVERY DAY
We Give Blue Chip Stamps