

St. Catherine Council Plans Spring Dance Scheduled by Parish Group

St. Catherine Council of Catholic Women will hold a luncheon at 12 noon, Tuesday, April 19, in the Parish Hall, 3846 Redondo Beach Blvd., Torrance.

General chairman of this event is Mrs. John Genoit, assisted by Mmes. Clinton Ellis, dining room chairman; Gerald Lytle, Chuck Stoddard, Homer Monteros, and Juan Mihaljovich, kitchen chairmen.

Highlight of the afternoon will be a Shift Party held after lunch. One and two piece shifts will be shown and available for purchase. Cards will also be played at 1 p.m. with prizes for high scores. The public is cordially invited to attend.

There is a special luncheon price for children and baby sitting is available.

St. Philomena Women's Council will present its annual "Swing Into Spring" dance Saturday evening, April 16, announces Mrs. Samuel Consalva, council president.

The dance will be held from 9 p.m. until 1 a.m. at the St. Peter and Paul parish hall, Bayview and G. Sts. in Wilmington. Mrs. Al Weber, decorations chairman, will use symbols of spring in decorating the hall.

The benefit dance is sponsored by the Ways and Means Committee, Mrs. Martin Lydon, chairman. She is being assisted by Mmes. Marvin Gregory, Armando Brunetti, Allen Molgaard, George Elftman and Dale Thompson.

Ray Nowick and his "Hi-Tones" will furnish music for dancing. At the close of the evening, door prizes will be awarded. Tickets may be purchased at the door.

Heide Floral Show Planned

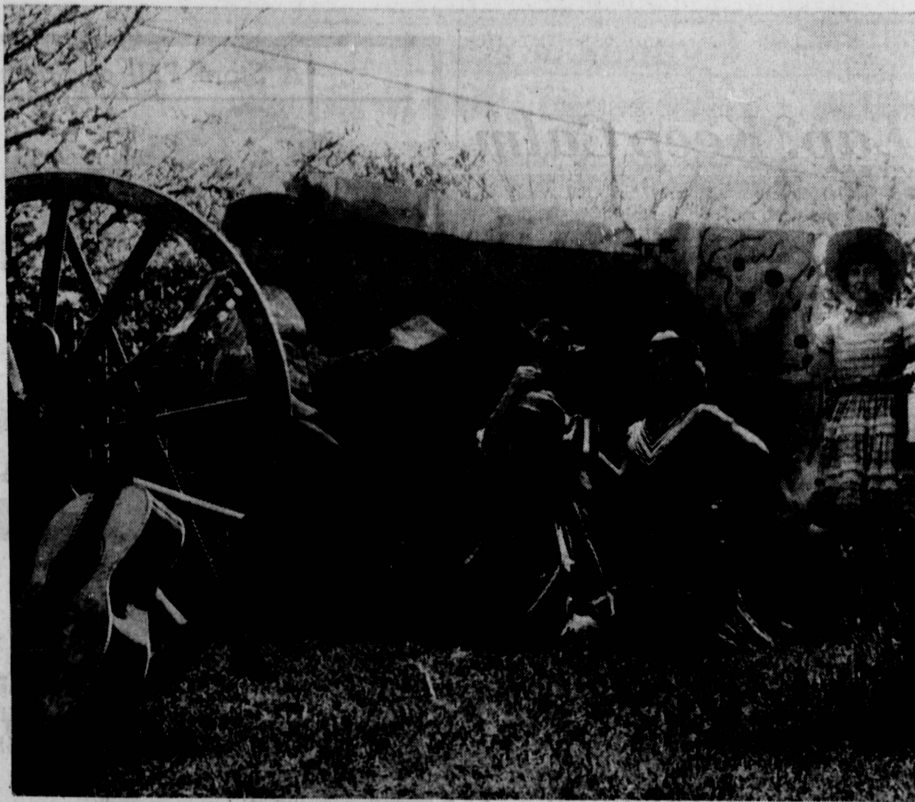
Torrance Babe Ruth Women's Auxiliary will present a "Heide" Floral Show on Monday, April 18, at 8 p.m. at the Higgins' Patio in Torrance. Admission is free.

The public is invited to see the artificial flower arrangements and will have the opportunity to order materials separately, including

containers and many gift items.

Many items will be brought for on-the-spot purchasing and those attending are asked to bring their own containers for arrangements.

Refreshments will be served.



RIDING THE WESTERN TRAIL

It's get along little doggie, we're on our way to the Serra Frontier Fiesta, which will be a three-day fun-filled event on the grounds at Serra High School, Compton and Van Ness Blvds., on Friday, Saturday and Sunday, April 22, 23 and 24. Setting the western theme are Mothers Club members, from left, Mmes. Joe Roussin, Mike Orozco, Lars Holt and Edwin Greteman. All parish organizations will assist with manning the 21 booths, six rides and the food counter.

Tickets will be on sale at half price on April 20 at the school or from any Serra students. Major prizes will be awarded and special entertainment has been planned. Hours on Friday are from 6 p.m. to 11 p.m. and Saturday and Sunday, from 1 to 11 p.m. Proceeds from the event, to which the public is invited, will be used for school improvements.

(Press-Herald Photo)



FREE TUITION FREE

STATE ACCREDITED

Critical Shortage of Licensed Vocational Nurses!! Free Training If Student Completes

MEMORIAL HOSPITAL OF HAWTHORNE

STARTS MAY 2, 1966

AGES 17-35

PHONE IMMEDIATELY DU 8-4101

Vocational Nursing School of California

2503 WEST 7th STREET, LOS ANGELES

WSCS to Install Thursday

Women's Society of Christian Service of the First Methodist Church will hold its monthly meeting tomorrow, beginning with Prayer Fellowship in the chapel, led by Mrs. Harlan McCool.

Mrs. Chester Wiley will conduct the business meeting at 10 a.m. in Friendship room.

The installation of new officers and the pledge service

will be held at 11 a.m. in the sanctuary with Mrs. Leo Huber as the installing officer. Theme for the installation is "And He Pointed His Finger At Me."

Leading the Pledge Service will be Mrs. Douglas Brown. Mrs. Garrett McCown, soloist, will be accompanied by Mrs. Harold Townsend.

The Women's Society will serve luncheon at 12 noon in the Recreation Room.

Canadian Guests

Dr. and Mrs. Ross Truscott and three children have returned to their home in Calgary, Alberta, Can. after spending two weeks here as houseguests of Dr. and Mrs. Ralph Black.

USDA CHOICE

SIDES of BEEF

AGED TO PERFECTION—CUT & WRAPPED—FLASH FROZEN HAND PICKED FROM THE FINEST EASTERN BEEF

59¢ lb

Prices Effective Thursday, April 13 Through Wednesday, April 20

Fresh U.S.D.A. Grade "A" CHICKEN LIVERS

69¢ lb



USDA CHOICE

T-BONE STEAK

For That Outdoor Bar-B-Que.

\$1.29 lb.

EASTERN — USDA CHOICE

PORTERHOUSE

THE FINEST

\$1.39 lb.

SPARE RIBS

LEAN MEATY FARMER STYLE

59¢ lb

WIENERS

ALL MEAT BAR-M

SLICED Bar M Bacon . . 79¢ lb

FRESH BULK Pork Sausage . . 49¢ lb

WORLD FINEST LEAN Ground Sirloin . 79¢ lb

Potato—Macaroni—Cole Slaw SALADS 39¢ lb

CENTER CUT EASTERN

PORK CHOPS

98¢ lb

NEW YORK STEAK 1.98 lb

U.S.D.A. CHOICE

CHATEAU BRIAND 1.98 lb

U.S.D.A. CHOICE

HAPPY HOURS 9-6 DAILY 9-8 FRI. 9-6 SUN.

ROLLING HILLS PLAZA — CRENSHAW & PACIFIC COAST HWY

Sir Loin MEAT SHOPPE

PHONE 326-9611 325-0166

APRIL 13, 1966

PRESS-HERALD

Rummage Sale

Women's Guild of the Central Evangelical Brethren Church will sponsor a rummage sale on Thursday and Friday, April 21 and 22 at the Guild Hall, Marcelina and Arlington. Hours are 9 a.m. to 5 p.m. both days. Persons who have donations are asked to deliver them to the hall on Wednesday. Those wishing pickup service may call Mrs. Bess Hoskings.

Crowning Glory

BEAUTY SALONS

"Loveliness... is a beautiful Lady"

APRIL SPECIALS

The Zodiac Sign for April is ARIES

Frosting 10⁹⁵

includes shampoo & set ALL TONERS - 3.00 extra

Roux Fanci-full Rinse 6⁹⁵

includes cut and plain set only

Budget Cold Wave 5⁹⁵

includes shampoo, cut and plain set. Tinted and bleached slightly higher

Sta Curl 10⁰⁰

includes shampoo, cut and set complete

Wondercurl 15⁰⁰

includes shampoo, cut and set complete

\$20 Magic Curl 12⁹⁵

includes shampoo, cut and set complete TINTED & BLEACHED HAIR ONLY

\$25 Glamour Curl 17⁹⁵

includes shampoo, cut and set complete TINTED & BLEACHED HAIR ONLY

OPEN ON SUNDAYS

NO APPOINTMENT EVER NEEDED

BANK AMERICARD ACCEPTED

Open Day & Night / 8 A.M. to Midnight

DOWNTOWN

2008 W. Carson

FA 8-9930

REDONDO BEACH

213 Palms Verde Bl.

FR 8-9004

You Must Present This Ad for Specials P.H.

ALL NEW 1966

ZENITH 23" PORTABLE TV



- 22,000 Volts
- Transformer Chassis
- All 82 Channels
- Front Speaker

\$168³⁷

We will allow any customer purchasing a black and white T.V. now

FULL CREDIT

On a Color T.V. if purchased by September, 1966 Providing this T.V. was purchased from us.

— Easy Terms Up To 24 Months To Pay — Largest Sale and Service Department in the South Bay

GRIFFEY'S

SERVING YOU SINCE 1925

235 N. Pacific Coast Highway

(Across from Redondo Union High School)

SALES AND SERVICE • PHONE FR 6-3444

STORE HOURS:

Monday through Saturday 9 a.m. 'til 6 p.m. Friday, 9 a.m. 'til 9 p.m. CLOSED SUNDAY