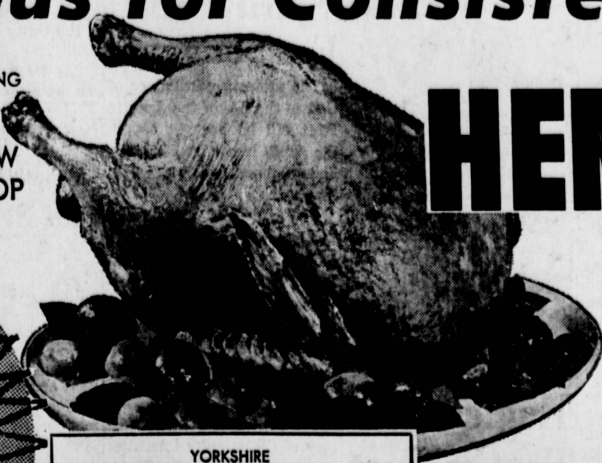




famous for Consistently LOW PRICES!



YOUNG NEW CROP



HEN TURKEYS

U.S.D.A. GRADE A OVEN READY PLUMP MEATY

39^c LB.

WHITE OR COLORS
Scot Tissue
1000 COUNT ROLL
10^c



YORKSHIRE
SLICED BACON
2 LB. THICK SLICED
\$1.37 PKG. **69^c lb.**

USDA GRADED CHOICE STEER BEEF

Chuck Steaks

TENDER JUICY U.S.D.A. CHOICE **39^c lb.**

CAL FAME FROZEN
ORANGE JUICE
6 OZ. CANS **5^c \$1**

HANDI-WRAP PLASTIC WRAP 200' ROLL **43^c**
SPRINGFIELD INSTANT MILK 14 QT. PKG. **89^c**
TOM SCOTT MIXED NUTS 1 3/4 OZ. CAN **69^c**

Laura Scudder
Mayonnaise



QT. JAR **39^c**

FARMER JOHN SKINLESS LINK SAUSAGE
8 OZ. PKG. **3 for 99^c**

THICK CUT BONE IN **SWISS STEAK 69^c**
BONELESS ROLLED **BEEF ROAST 89^c**
ENGLISH CUT **BEEF ROAST 79^c**
BONELESS TENDER JUICY **CHUCK ROAST 79^c**
BONELESS TENDER JUICY **FAMILY STEAK 89^c**
BONELESS TENDER JUICY CUT-UP **STEWING BEEF 79^c**

TENDER JUICY **FARMER JOHN FULLY COOKED HAMS**
FULL SHANK **HALF HAMS 49^c lb.** **WHOLE HAMS 59^c lb.** **MEATY BUTT END 59^c lb.** **CENTER CUT HAM SLICES 98^c lb.**

SKIPPY **DOG FOOD**
3 15 OZ. CANS **25^c**

MORTON HOUSE **BEEF STEW**
24 OZ. CAN **39^c**

PET
Canned Milk
NO. 1 TALL CANS **25^c**



WEAVER **Foil Wrap** 25' FOOT ROLL **25^c**
VAN BRODE ASSORTED **Cereals** 10 PAK **39^c**
MAISON ROYAL 4-OZ. CAN **Black Pepper** **29^c**

Hi-Ho Crackers BY SUNSHINE 10 OZ. PKG. **25^c**
Hunt's Pork & Beans NO. 2 1/2 CAN **4 for \$1**
Apple Sauce APPLE TIME 15 OZ. CAN **7 for \$1**
Dill Pickles HOLIDAY WHOLE OR KOSHER 22 OZ. JAR **29^c**
Kidney Beans SAW BRAND 15 OZ. CAN **6 for \$1**

BOYS INSTANT **COFFEE**
2 OZ. JAR **29^c**
6 OZ. JAR **69^c**
10 OZ. JAR **\$1.09**

Delicatessen
PLUMROSE IMPORTED DANISH CANNED
NO REFRIGERATION NEEDED. FEEDS A FAMILY OF 4. NO FAT... NO WASTE
PICNIC
2 LB. CAN **\$1.89**

WISCONSIN MONTEREY JACK CHEESE 59^c
GRAND TASTE FRESH LIVER SAUSAGE 35^c BY THE PIECE

OLD EL PASO **CHILES** 2 4 OZ. CANS **25^c**
BIG SHOT **CHOCOLATE SYRUP** 12 OZ. CAN **59^c**
HUNTS HICKORY OR PIZZA **CATSUP** 5 1/4 BTL. **\$1**

MORTON
Fruit Pies
ASSTD. 8 INCH EXCEPT APRICOT **25^c**

Frozen Foods
ORE-IDA CRINKLE CUTS **French Fries** 3 LB. PKG. **\$1**
VAN DE KAMP 7 1/2-OZ. PKG. **Enchiladas** 3 FOR **\$1**
CERTI FRESH **Fish Sticks** 8-OZ. PKG. 3 FOR **\$1**
HAWAIIAN **Juice Bars** 6 PAK 3 FOR **\$1**
AUNT JEMIMA 9-OZ. **Frozen Waffles** 3 FOR **\$1**

Fresh Fruits & Vegetables

SWEET RIPE ELBERTA FREESTONE
Peaches
2 LBS. **29^c**

FRESH PICKED **CORN**
YOUNG TENDER **5^c EAR**

FRESH PICKED **CARROTS**
SUGAR RIPE EXTRA LARGE **DRIED PRUNES**
2 ONE LB. CRLO PKG. **19^c**
12 OZ. PKG. **25^c**

ONE PINT BOTTLE
ISOPROPYL ALCOHOL
OUR REG. LOW PRICE **29^c**

SPRINGFIELD
GELATIN
ASSTD. FLAVORS 3 OZ. PKG. **5^c**

30 QT. POLY FOAM HOT OR COLD
PICNIC CHEST
A \$2.00 VALUE WHILE THEY LAST! **88^c**

13 INCH METAL
PORTABLE B-B-Q GRILL
3 HEIGHT ADJUSTABLE \$2.00 VALUE WHILE THEY LAST! **99^c**

BLOOMER STYLE
PLASTIC BABY PANTS
REGULARLY SOLD FOR 25^c PAIR
SIZES SMALL MEDIUM, LARGE & EX. LGE.
ASSORTED COLORS **17^c PAIR**

ALL REG. 5^c
• **CANDY BARS**
• **GUMS** • **MINTS**
YOUR CHOICE **3 FOR 10^c**

BUTTERNUT **COFFEE**
1-LB. CAN **79^c**
2-LB. CAN **1.37**
3-LB. CAN **2.29**

KRAFT **DRESSINGS** 8-OZ. BOTTLE
FRENCH **31^c**
CATALINA **39^c**
MIRACLE FRENCH **31^c**
CASINO **39^c**
ITALIAN **39^c**
1000 ISLAND **39^c**
ROKA BLEU CHEESE **45^c**

TORRANCE: Normandle & Carson (OPEN TIL MIDNIGHT) REDONDO: Manhattan Beach and Inglewood (OPEN TIL 10 P.M.) WILMINGTON: Avalon at Anaheim (OPEN TIL 10 P.M.)
GARDENA: Redondo Beach & Van Ness (OPEN TIL 10 P.M.) HERMOSA BEACH: Prospect & Pier Ave (OPEN TIL MIDNIGHT)



AD GOOD 7 FULL DAYS THURS., AUG. 5th THRU WED., AUG. 11th