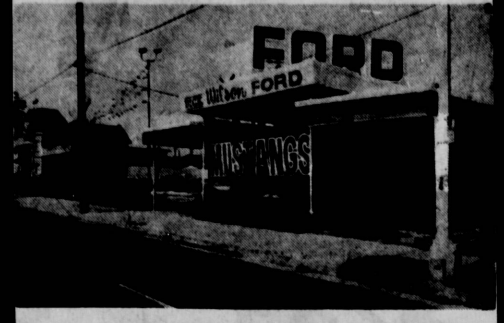


● Automotive AUTOMOBILES For Sale 190 ● Automotive AUTOMOBILES For Sale 190 ● Automotive AUTOMOBILES For Sale 190 ● Automotive AUTOMOBILES For Sale 190 ● Automotive AUTOMOBILES For Sale 190 ● Automotive AUTOMOBILES For Sale 190 ● Automotive AUTOMOBILES For Sale 190 ● Automotive AUTOMOBILES For Sale 190



# DICK WILSON FORD MUSTANG HEADQUARTERS



**730 SO. PACIFIC COAST HWY. (6 blk. S. Torrance Blvd.) REDONDO BEACH 234 SO. PACIFIC COAST HWY. (1/2 blk. N. Torrance Blvd.)**

FR 6-8793 SP 2-5526

FR 6-8793 SP 2-5526

## \$ VACATION \$ CASH BACK

TAKE ADVANTAGE OF OUR HIGH ALLOWANCE ON YOUR TRADE-IN TO MAKE YOUR DOWN PAYMENT AND WE WILL RETURN TO YOU THE DIFFERENCE IN CASH FOR YOUR VACATION. BUY NOW AND SAVE.

## \$45 DOWN

DELIVERS ANY NEW, USED CAR, TRUCK OR MUSTANG

PLUS TAX & LICENSE ON APPROVED CREDIT

## LOWER PAYMENTS

BUY YOUR NEW OR USED CAR AND REDUCE YOUR MONTHLY PAYMENTS WITH THE HELP OF OUR CREDIT COUNSELORS! REDUCE YOUR MONTHLY CASH OUTLAY

FURNITURE LOAN	\$273	\$43.99 MO.
APPLIANCES	\$198	\$31.91 MO.
YOUR PRESENT CAR	\$831	\$6.18 MO.
LOANS, PERSONAL	\$118	\$8.11 MO.
DOCTOR BILLS	\$118	\$8.67 MO.
PRESENT OUTLAY	\$187.76	\$187.76 MO.
MONTHLY OUTLAY INCLUDING YOUR BRAND NEW FORD		\$76.40

### NEW CARS & TRUCKS

### TRANSPORTATION SPECIALS

### SUPER SPECIAL USED CARS

**1965  
1/2-TON PICKUP**  
Custom Trim  
**FULL PRICE \$1650**  
36 MOS. AT **\$37.77**

---

**BRAND NEW  
1965  
CUSTOM SPECIAL  
2-DOOR SEDAN**  
Cruisomatic transmission, white sidewall tires, deluxe wheel covers, all vinyl interior, fresh air heater.  
**FULL PRICE \$2095**  
36 MOS. AT **\$46.95**

**BRAND NEW 1965  
RANCHERO**  
V8, 6 cylinder, 4-speed, 3-speed automatic, radio, heater.  
**PRICED FROM \$1788**  
36 MOS. AT **\$39.95**

---

**1965  
ECONOLINE VAN**  
Rear door glass, 3-speed standard duty 650x13, 4-ft. Closed emission system. 1cc reflectors  
**FULL PRICE \$1895**  
36 MOS. AT **\$43.13**

---

**BRAND NEW 1965  
FORD GALAXIE 500**  
Cruisomatic transmission, back-up lights, clock, self regulating fresh air heater, deluxe cloth and vinyl interior. Color code carpets front and rear.  
**FULL PRICE \$2388**  
36 MOS. AT **\$53.67**

<b>FULL PRICE \$95</b>	MO. PYMT. 15.00
1952 FORD Club Sedan	STK 1104
1954 CHEVROLET Sedan, automatic, radio and heater	STK 1079
1955 BUICK Sedan V8, automatic, radio and heater	STK 1112
<b>\$195</b>	MO. PMT. 15.00
1958 FORD Country Sedan, V8, automatic, radio & heat	STK 946
1957 FORD Wagon, summer special	STK 1080
<b>\$295</b>	MO. PMT. 15.00
1960 FALCON 2-Door, stick shift, radio and heat	STK 603
1960 RAMBLER Custom, automatic, radio and heater	STK 881
1959 FORD Wagon, rick, radio and heater	STK 1039
1959 FORD Custom, V8, automatic, radio and heater	STK 803
<b>\$395</b>	MO. PYMT. 15.00
1960 PLYMOUTH Hardtop, automatic, radio and heater	STK 817
1960 FORD Custom, stick shift	STK 871
1959 CHEVROLET Impala V8, automatic, radio and heat	STK 981
1960 FORD Galaxie Convertible V8, automatic, radio and heater	STK 981
<b>\$495</b>	MO. PYMT. 17.00
1961 FALCON Sedan, stick shift	STK 829
1959 RAMBLER Wagon, stick shift	STK 957
1962 FALCON FUTURA, bucket seats	STK 1064

<b>\$ 895</b>	1962 GALAXIE 500, V-8, Automatic, power steering, radio, heater. All vinyl interior. Stk. 1060	<b>\$28.00</b> mo.
<b>\$1295</b>	1962 Ford Country Sedan, T-Bird engine, radio, heater, p/steering, power rear windows (4-speed trans.) Stk 966	<b>\$37.00</b> mo.
<b>\$1095</b>	1962 MERCURY Sedan, V-8, automatic transmission, radio, heater, power steering. Stk. 814.	<b>\$33.92</b> mo.
<b>\$ 795</b>	1961 BUICK, V-8, automatic, power steering, radio and heater. All white/blue interior. Stk. 750.	<b>\$25.00</b> mo.
<b>\$ 895</b>	1963 RAMBLER Hardtop. Bucket seats, stick shift, radio, heater. Stk 1111.	<b>\$28.00</b> mo.
<b>\$1195</b>	1963 CHEV MONZA, 4 speed, radio, heater, bucket seats. Stk. 1034.	<b>\$35.00</b> mo.
<b>\$3095</b>	1964 THUNDERBIRD Hardtop, V-8, automatic, power steering, power brakes, air cond. Stk. 1025. A summer special.	<b>\$68.00</b> mo.
<b>\$ 795</b>	1961 BUICK Sedan, V-8, automatic, radio, heater, power steering. Stk. 750.	<b>\$25.00</b> mo.
<b>\$1195</b>	1963 FORD 1/2 Ton Pickup, V-8, 4 speed Stk. 1113.	<b>\$33.00</b> mo.
<b>\$ 495</b>	1961 FALCON Station Wagon. Radio and heater. Stk. 1085.	<b>\$17.00</b> mo.

**We sell some funny looking used cars, too.**

We sell mostly new VWs. But because business is so good we find ourselves selling used ones, too.

Most of them are trade-ins from first time customers coming back for seconds. We really didn't expect to see them for 5 or 10 years. But then some people are creatures of habit. They trade every 2 or 3 years whether they need a new car or not.

Come in and see some of our recent VW trade-ins. They look as funny as the day they were new.

<b>'60 VW</b> 2-Door Sedan, Coral finish, radio, heater. Excellent transportation car. <b>\$899</b>	<b>'61 VW Sedan</b> Deluxe, Green. Engine just rebuilt. <b>\$1099</b>
<b>'63 VW</b> Sunroof Sedan, Excellent condition, Cherry red finish. <b>\$1299</b>	<b>'62 VW</b> Deluxe 2-Door Sedan, Radio & heater, Cherry red finish. <b>\$1199</b>

EXCISE TAX CUT NOW IN EFFECT . . . TAKE ADVANTAGE OF OUR NEW CAR SELECTION AND SAVE \$\$\$

See our selection of station wagons and campers

## RUSS THOR INC.

Authorized Volkswagen Dealer  
20410 HAWTHORNE BLVD.  
370-5771 Open Evenings & Sundays  
TORRANCE

# CARL'S

**LOW OVERHEAD GIVES BEST DEAL AT CHRYSLER - PLYMOUTH - VALIANT - IMPERIAL GIGANTIC REMODELING SALE!**

STOCK MUST BE REDUCED — SAVE \$\$\$ AS NEVER BEFORE!  
1200 N. AVALON BLVD., WILMINGTON TE 5-3131  
OPEN 7 DAYS A WEEK 9 A.M. TO 9 P.M. \* On approved credit.

USED CARS			★ BRAND NEW 1965's ★		USED CARS	
<b>'59 PLYMOUTH V-8</b> Belvedere 2-door Hardtop, Automatic, radio, heater, whitewalls. #D5764. <b>\$299</b>	<b>'57 CHRYSLER</b> 4-door Sedan, Radio, heater, automatic, power steering & brakes, whitewalls. #D5823. <b>\$599</b>	<b>'64 PLYMOUTH V-8</b> Fury convertible, Automatic, radio, heater, power steering, still in warranty. #P5778. <b>\$2099</b>	<b>'65 VALIANT</b> 2-door Sedan, 6 cylinder, Factory equipped. #468. <b>\$1859</b>	<b>'65 PLYMOUTH</b> 6 cylinder 2-door, Automatic, factory equipped. #382. <b>\$2199</b>	<b>'62 PLYMOUTH V-8</b> Fury 4-door Hardtop, Automatic, power steering & brakes, windows, whitewalls. #P5818. <b>\$1199</b>	<b>'63 PONTIAC</b> Bonneville 2-door Hardtop, Automatic, radio, heater, power steering & brakes. #D5847. <b>\$2099</b>
<b>'60 OLDSMOBILE</b> Super 88 4-door Sedan, Automatic, radio, heater, power steering & brakes, whitewalls. #D5842. <b>\$899</b>	<b>'56 CHRYSLER</b> 2-door Hardtop, Automatic, radio, heater, power steering & brakes. #9751. <b>\$299</b>	<b>'59 PLYMOUTH V-8</b> Belvedere 4-door Sedan, Automatic, radio, heater, power steering. #D5672. <b>\$299</b>	<b>'65 VALIANT</b> V-8 4-door Sedan, Factory equipped. #148. <b>\$1999</b>	<b>'65 BARRACUDA</b> V-8 Fastback, Factory equipped. #413. <b>\$2599</b>	<b>'58 CADILLAC</b> 4-door Hardtop, Automatic, radio, heater, power steering & brakes, whitewalls. #D5838. <b>\$799</b>	<b>'62 PLYMOUTH</b> Belvedere station wagon, V-8, automatic, radio, heater, power steering. #P5814. <b>\$1399</b>
<b>'63 CHEVY II</b> Nova 4-door, 6 cylinder, automatic, radio, heater, whitewalls. #P5801. <b>\$799</b>	<b>'62 CHRYSLER</b> 4-door Hardtop, Radio, heater, automatic, power steering & brakes. #D5728. <b>\$1599</b>	<b>'58 OLDSMOBILE</b> "88" 4-door Hardtop, Automatic, radio, heater, power steering, brakes & windows, whitewalls. #D5845. <b>\$499</b>	<b>'65 CHRYSLER</b> Newport 4-door sedan, V-8, automatic, power steering & brakes, radio & heater. #537. <b>\$3299</b>	<b>IMPERIALS</b> All Fully Equipped <b>SAVE \$1000 to \$2000</b>	<b>'59 BUICK</b> Invicta station wagon, Full power, factory air, radio, heater, automatic. #D5874. <b>\$899</b>	<b>'54 FORD</b> V-8 2-door Sedan, Automatic, radio & heater. #D5789. <b>\$99</b>
<b>'62 PONTIAC</b> Tempest station wagon, Automatic, radio, heater, whitewalls. #D5774. <b>\$999</b>	<b>'54 BUICK</b> Super 2-door hardtop, Automatic, radio, heater, power steering & seat. #D5762. <b>\$99</b>	<b>'53 CHEVROLET</b> 1/2-Ton pickup, 6 cylinder, standard transmission, radio, heater. #D5875. <b>\$9</b>			<b>'61 CHRYSLER</b> New Yorker 4-door, Automatic, power steering and brakes, radio, heater, whitewalls. #D5823. <b>\$1399</b>	<b>'63 BUICK</b> Electra 2-door Hardtop, Automatic, radio, heater, power steering, brakes & windows, factory air. #D5840. <b>\$2499</b>

Delivers\* O.A.C.